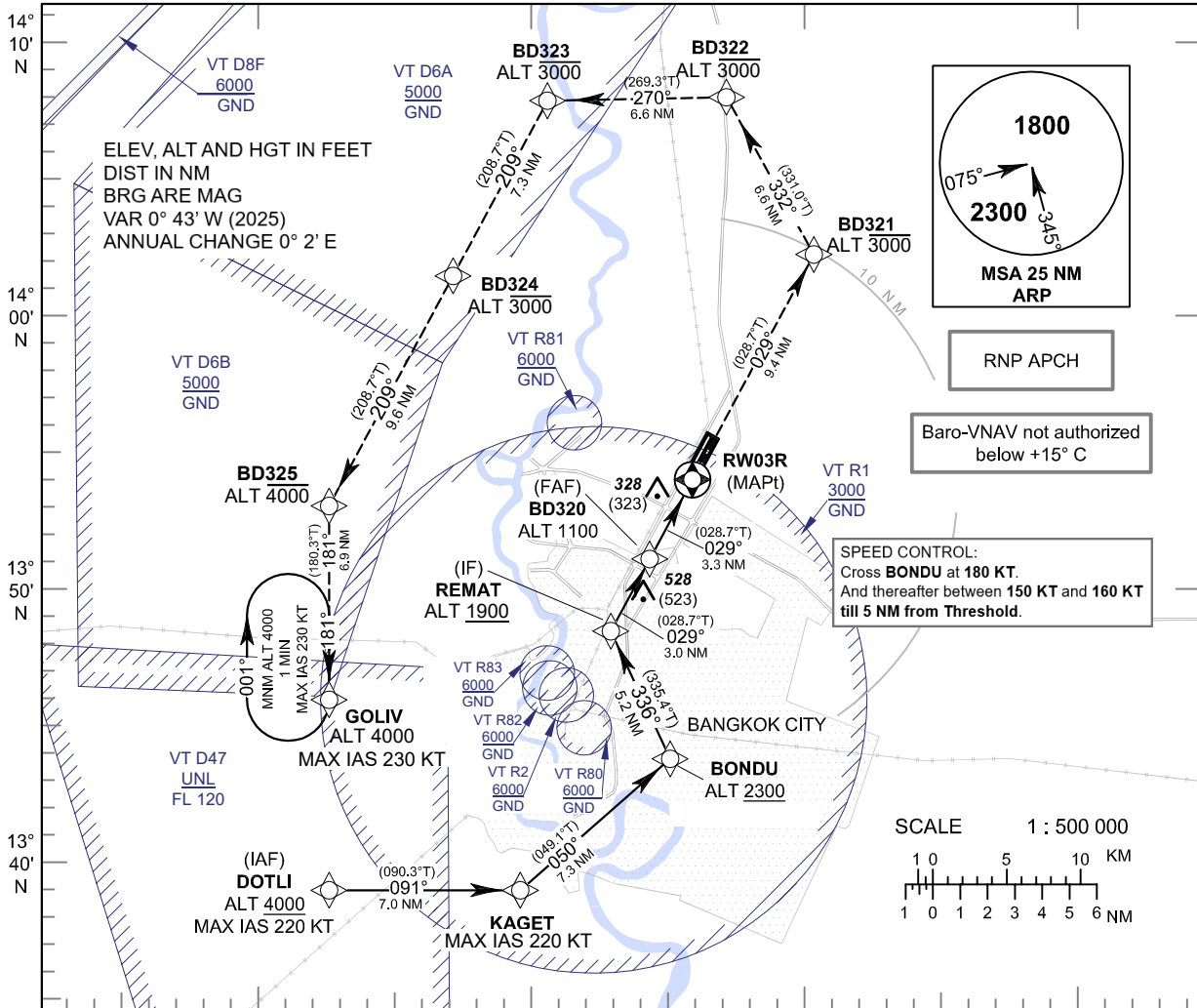


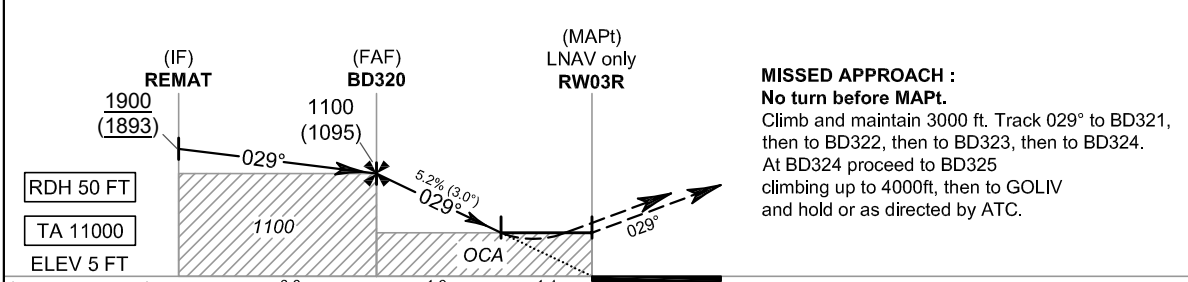
**INSTRUMENT APPROACH CHART - ICAO**      **AERODROME ELEV 9 FT**  
**HEIGHTS RELATED TO THR RWY03R - ELEV 5 FT**

APP : 119.1, 274.5  
 : 119.4, 274.5  
 : 120.3, 274.5  
 : 133.4, 274.5  
 : 122.35, 274.5  
 : 124.35, 274.5  
 : 125.2, 274.5  
 DAR : 133.0, 274.5  
 TWR : 118.1, 236.6  
 ATIS : 126.4, 344.6

**BANGKOK / Don Mueang Intl (VTBD)**  
**RNP RWY03R**



100° 20' E      100° 30' E      100° 40' E      100° 50' E



**MISSED APPROACH :**  
**No turn before MAPt.**  
 Climb and maintain 3000 ft. Track 029° to BD321, then to BD322, then to BD323, then to BD324. At BD324 proceed to BD325 climbing up to 4000ft, then to GOLIV and hold or as directed by ATC.

OCA/H	A	B	C	D	NM to NEXT WPT	FAF	2 NM	1.4 NM
LNAV/VNAV	490 (485)				Altitude (Height)	1100 (1095)	685 (680)	500 (495)
LNAV	500 (495)				Ground speed	knot	70 90 100 120 140 160	
Circling (OCH AAL)	800 (791)			1100 (1091)	Rate of descent FAF-MAPt (5.2%)	ft/min	369 474 527 632 737 843	

CHANGE: PDR.