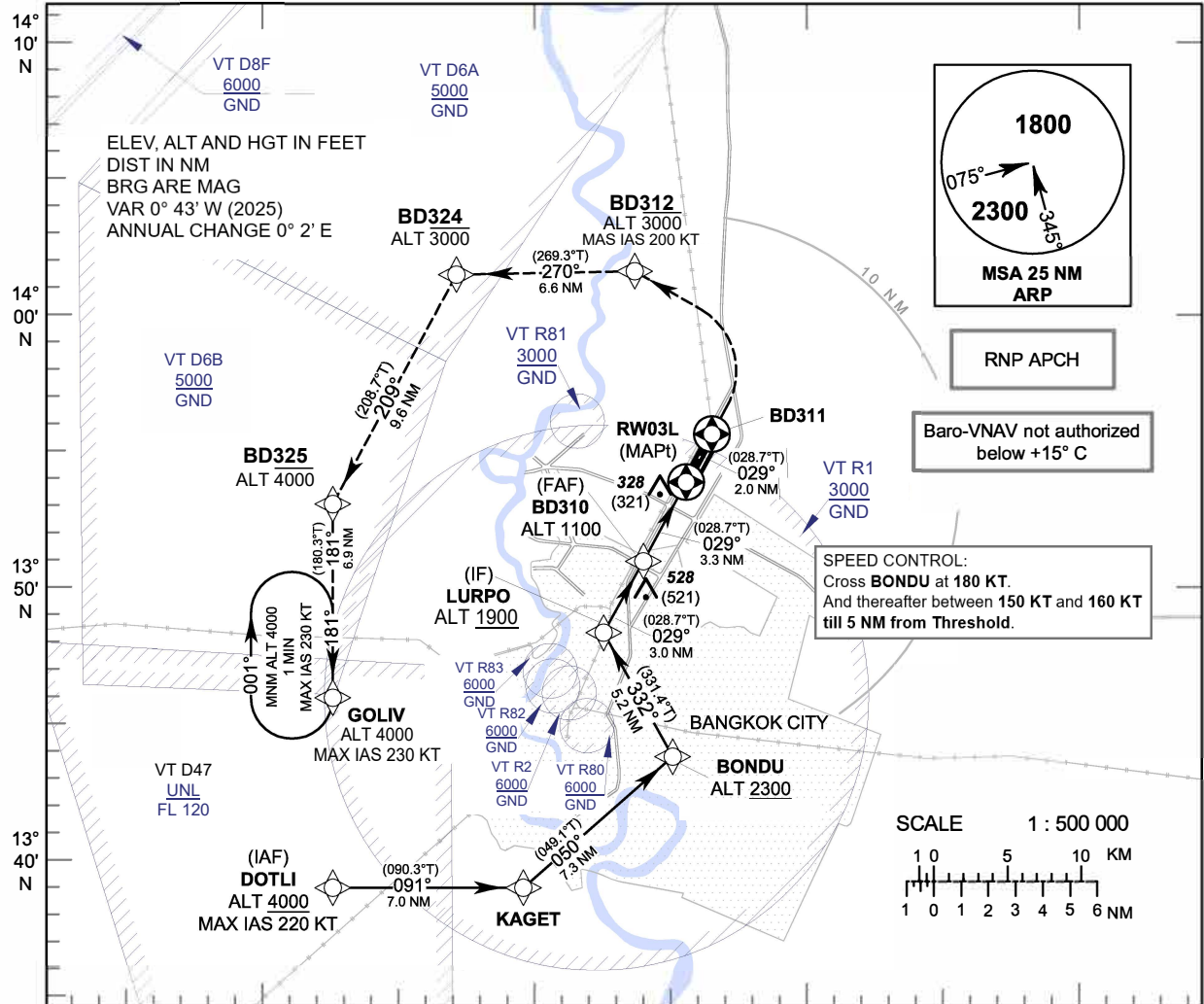


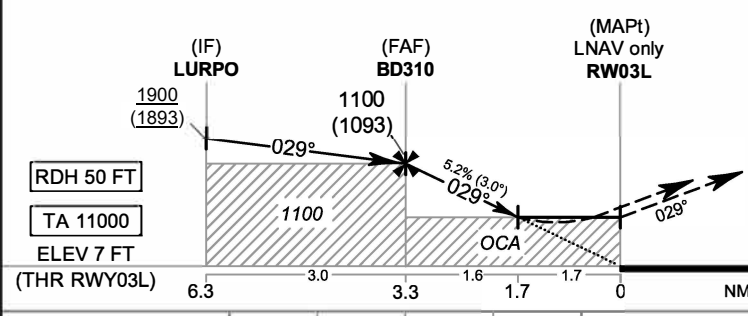
**INSTRUMENT APPROACH CHART - ICAO**      **AERODROME ELEV 9 FT**  
**HEIGHTS RELATED TO THR RWY03L - ELEV 7 FT**

APP	: 119.1, 274.5
	: 119.4, 274.5
	: 120.3, 274.5
	: 133.4, 274.5
	: 122.35, 274.5
	: 124.35, 274.5
	: 125.2, 274.5
DAR	: 133.0, 274.5
TWR	: 118.1, 236.6
ATIS	: 126.4, 344.6

**BANGKOK / Don Mueang Intl (VTBD)**  
**RNP RWY03L**



100° 20' E      100° 30' E      100° 40' E      100° 50' E



**MISSED APPROACH :**  
**No turn before MAPt.**  
**Speed restricted to MAX IAS 200 KT until BD312**  
 Climb and maintain 3000 ft. Track 029° to BD311, then turn left direct to BD312, then to BD324.  
 At BD324 proceed to BD325 climbing up to 4000ft, then to GOLIV and hold or as directed by ATC.

OCA/H	A	B	C	D	NM to NEXT WPT	FAF	2 NM	1.7 NM				
LNAV/VNAV	490 (483)				Altitude (Height)	1100 (1093)	690 (683)	590 (583)				
LNAV	590 (583)				Ground speed	knot	70	90				
Circling (OCH AAL)	800 (791)				1100 (1091)				100	120	140	160
									Rate of descent FAF-MAPt (5.2%)	ft/min	369	474

CHANGE: PDR.