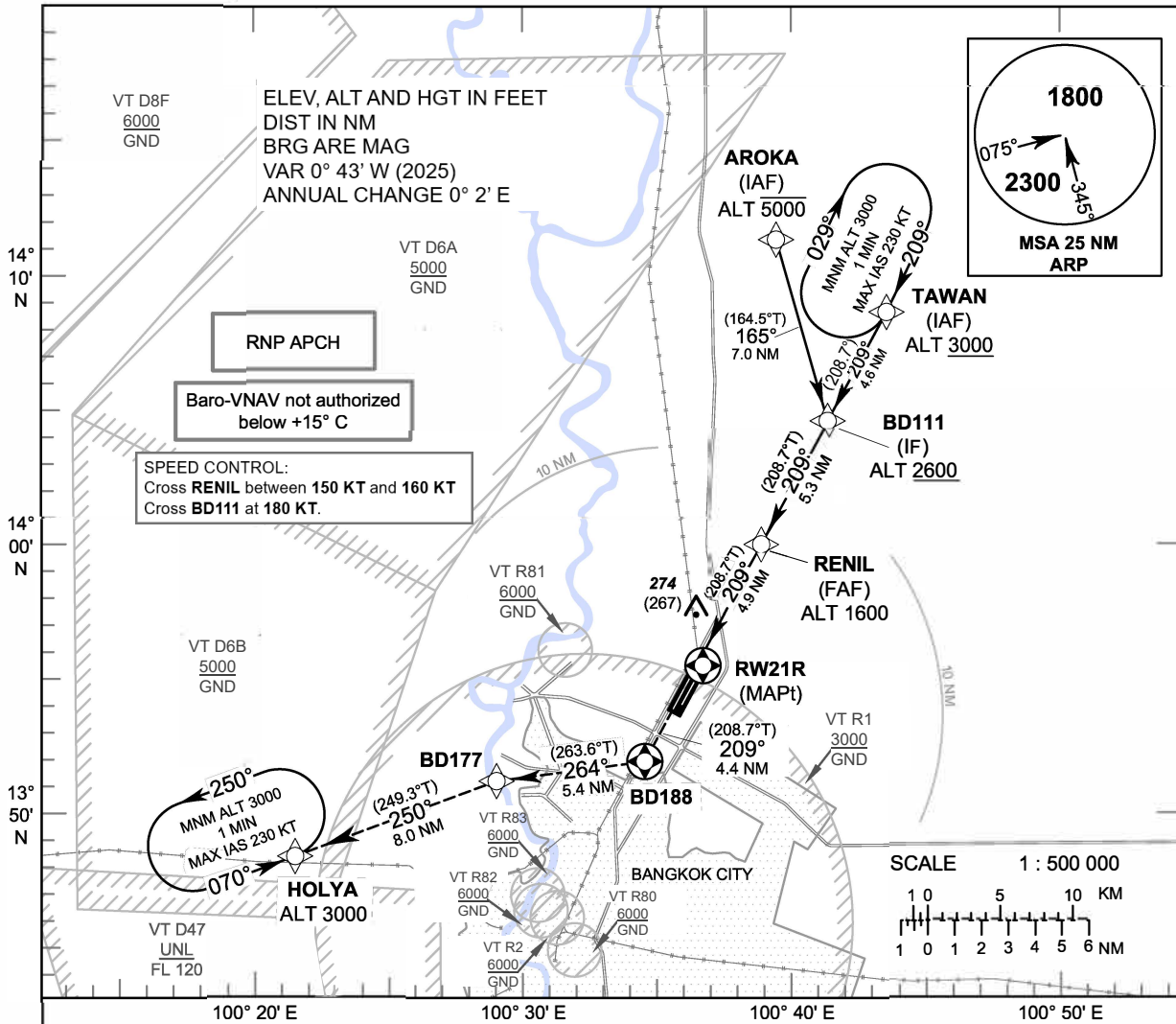


INSTRUMENT APPROACH CHART - ICAO **AERODROME ELEV 9 FT**
HEIGHTS RELATED TO THR RWY21R - ELEV 7 FT

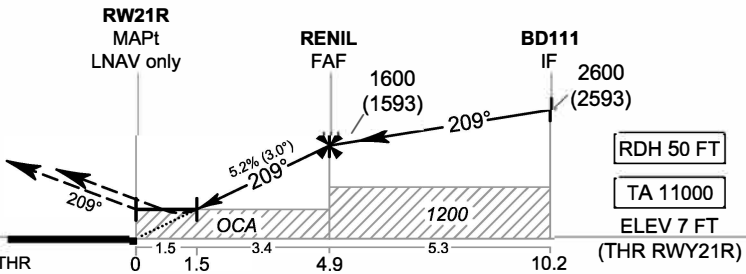
APP : 119.1, 274.5
 : 119.4, 274.5
 : 120.3, 274.5
 : 133.4, 274.5
 : 122.35, 274.5
 : 124.35, 274.5
 : 125.2, 274.5
 DAR : 133.0, 274.5
 TWR : 118.1, 236.6
 ATIS : 126.4, 344.6

BANGKOK / Don Mueang Intl (VTBD)
RNP RWY21R



MISSED APPROACH :

No turn before MAPt.
 Climb on track 209° to BD188,
 then turn right to BD177,
 then proceed to HOLYA at 3000 FT,
 and hold or as directed by ATC.



OCA/H	A	B	C	D	NM to NEXT WPT	1.5 NM	2 NM	3 NM	4 NM	FAF	
LNAV/VNAV	370 (363)				Altitude (Height)	530 (523)	690 (683)	1005 (998)	1320 (1313)	1600 (1593)	
LNAV	530 (523)				Ground speed	knot	70	90	100	120	
Circling (OCH AAL)	800 (791)				1100 (1091)	Rate of descent	ft/min				
						F AF-MAPt (5.2%)	369	474	527	632	737

CHANGE: PDR.