

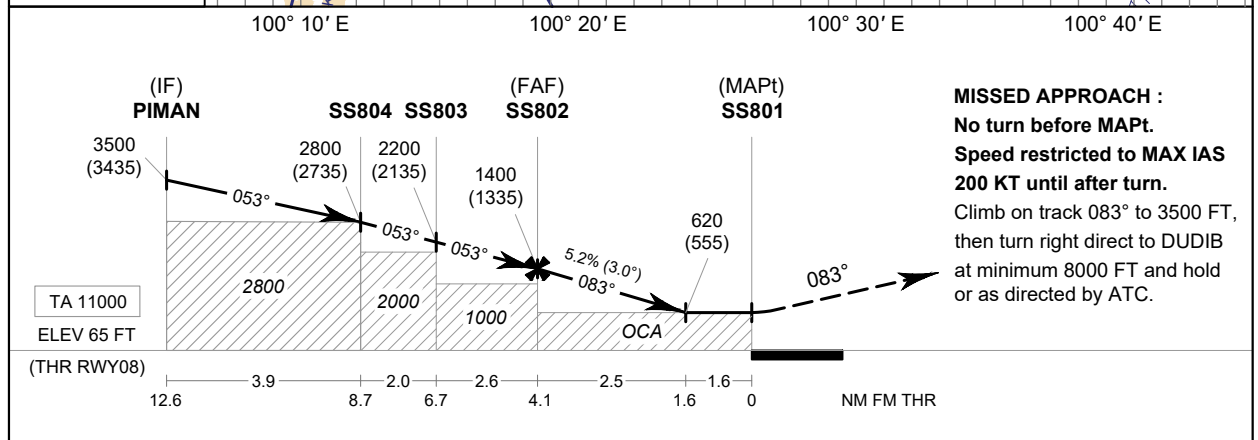
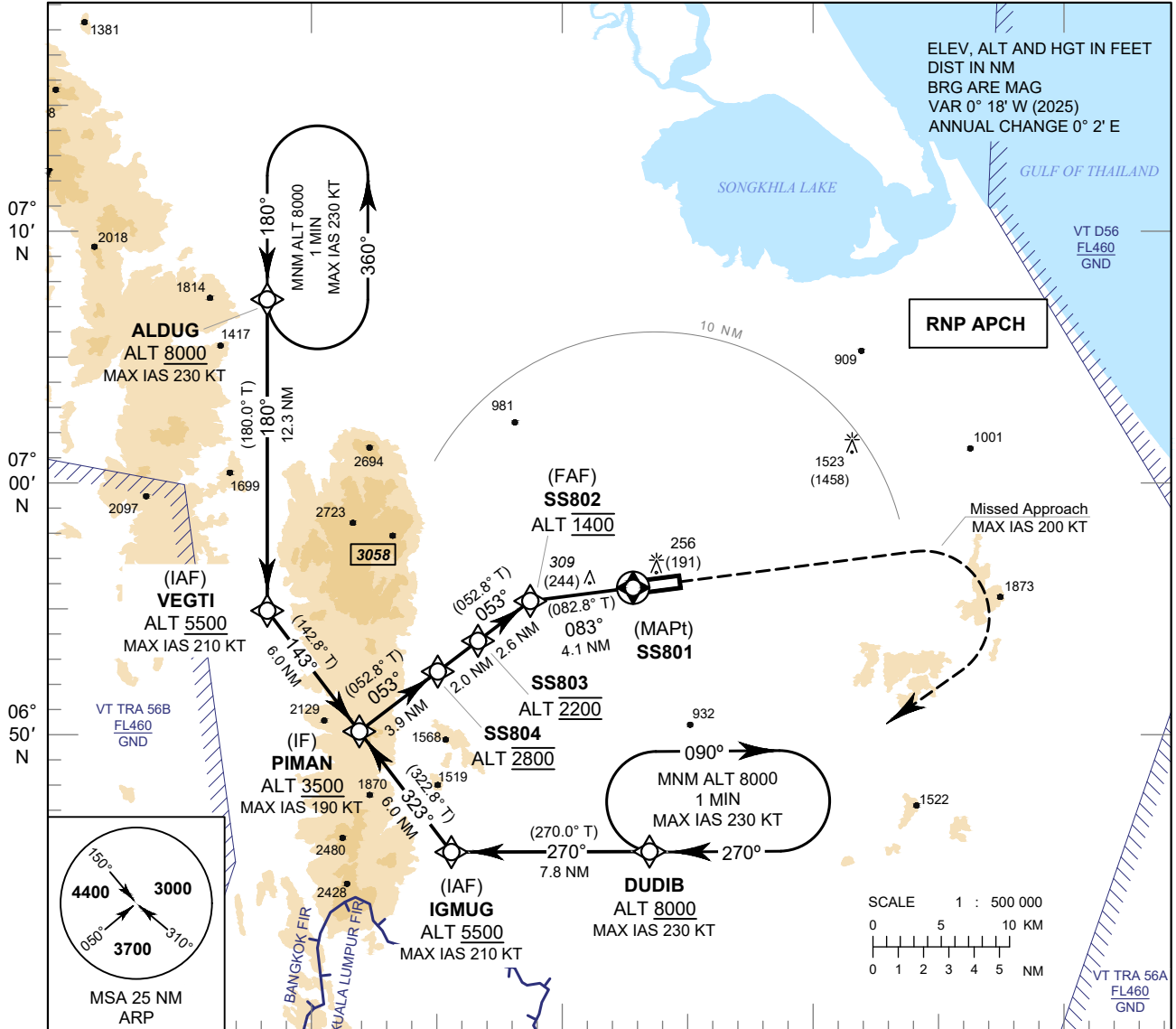
**INSTRUMENT APPROACH CHART - ICAO**

**AERODROME ELEV 90 FT**  
**HEIGHTS RELATED TO THR RWY08 - ELEV 65 FT**

APP : 126.7, 301.5  
 TWR : 118.1, 275.8  
 GND : 121.9, 257.8  
 ATIS : 128.8

**SONGKHLA / Hat Yai Intl (VTSS)**

**RNP RWY08**



**MISSED APPROACH :**  
 No turn before MAPt.  
 Speed restricted to MAX IAS 200 KT until after turn.  
 Climb on track 083° to 3500 FT, then turn right direct to DUDIB at minimum 8000 FT and hold or as directed by ATC.

OCA/H	A	B	C	D	NM to NEXT WPT	FAF	4 NM	3 NM	2 NM	1.6 NM			
LNAV	620 (555)				Altitude (Height)	1400 (1335)	1380 (1315)	1065 (1000)	750 (685)	620 (555)			
Circling (OCH AAL)	900 (810)		1500 (1410)		Ground Speed	knot	70	90	100	120	140	160	
<b>REMARK :</b>	NO DIRECT TO IF AND FAF DUE TO HIGH TERRAIN AND PROXIMITY OF KUALA LUMPUR FIR.					Rate of Descent FAF-MAPt 5.2%	ft/min	369	474	527	632	737	843

CHANGE : MAG VAR. PDR.