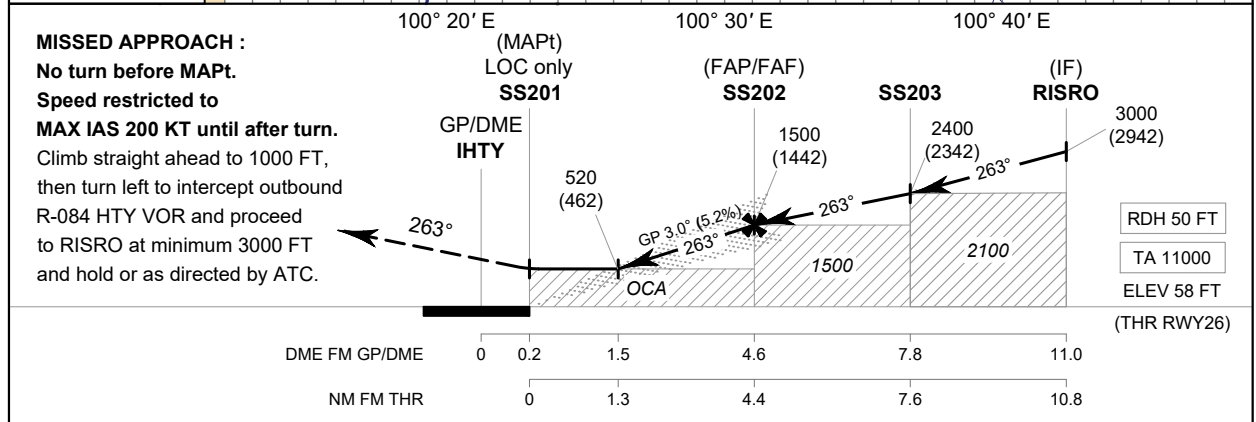
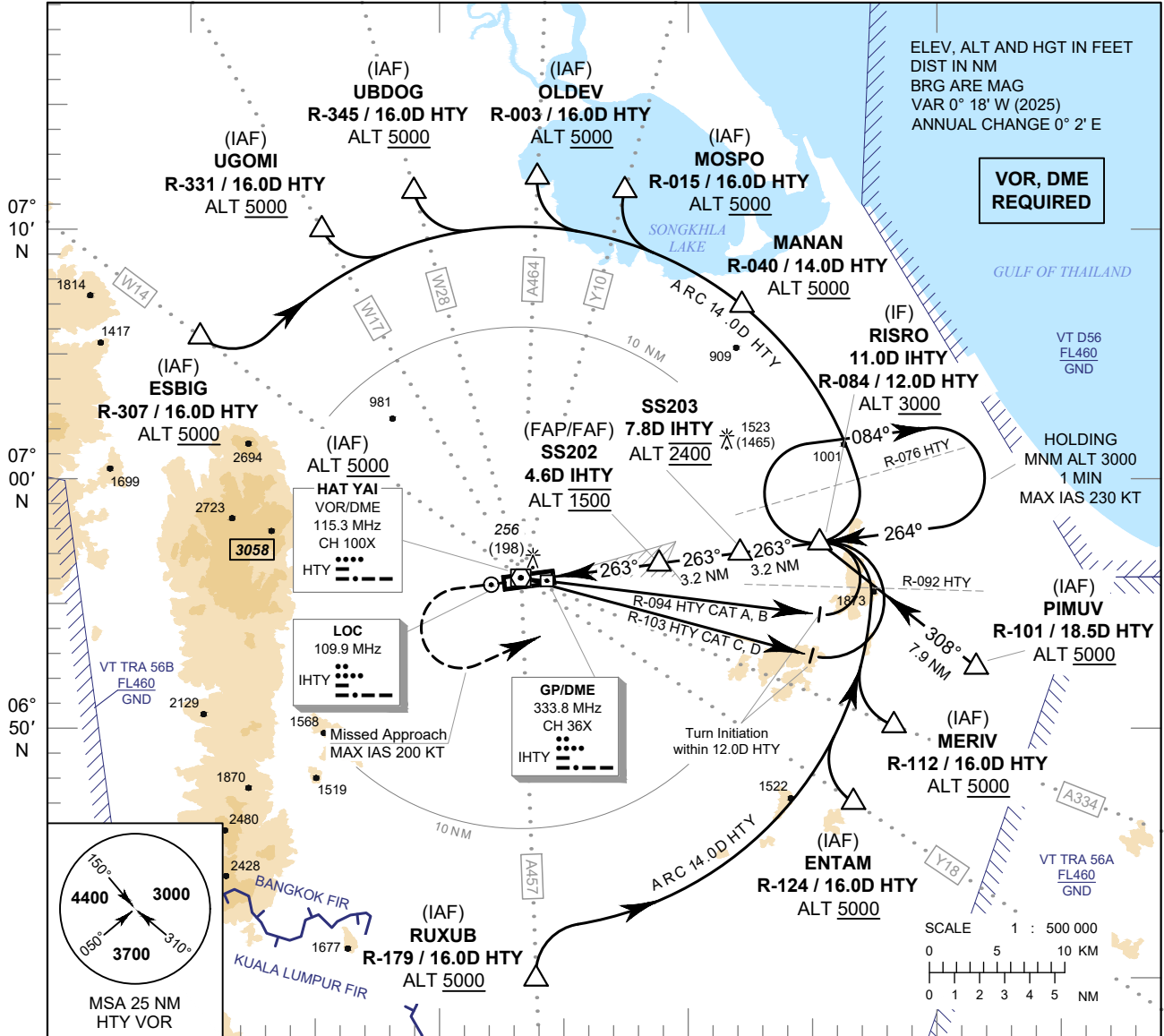


**INSTRUMENT APPROACH CHART - ICAO**  
**AERODROME ELEV 90 FT**  
**HEIGHTS RELATED TO THR RWY26 - ELEV 58 FT**

APP : 126.7, 301.5  
 TWR : 118.1, 275.8  
 GND : 121.9, 257.8  
 ATIS : 128.8

**SONGKHLA / Hat Yai Intl (VTSS)**  
**ILS or LOC y RWY26**



OCA/H		A	B	C	D	GS OUT	Distance (IHTY)	1.5D	2D	3D	4D	FAF	
Straight-in Approach	CAT I	290 (232)	300 (242)	310 (252)	320 (262)		Altitude (Height)	520 (462)	680 (622)	995 (937)	1310 (1252)	1500 (1442)	
LOC only		520 (462)				Ground Speed	knot	70	90	100	120	140	160
Circling (OCH AAL)		900 (810)		1500 (1410)		Rate of Descent	ft/min	369	474	527	632	737	843

CHANGE : MAG VAR. PDR.