

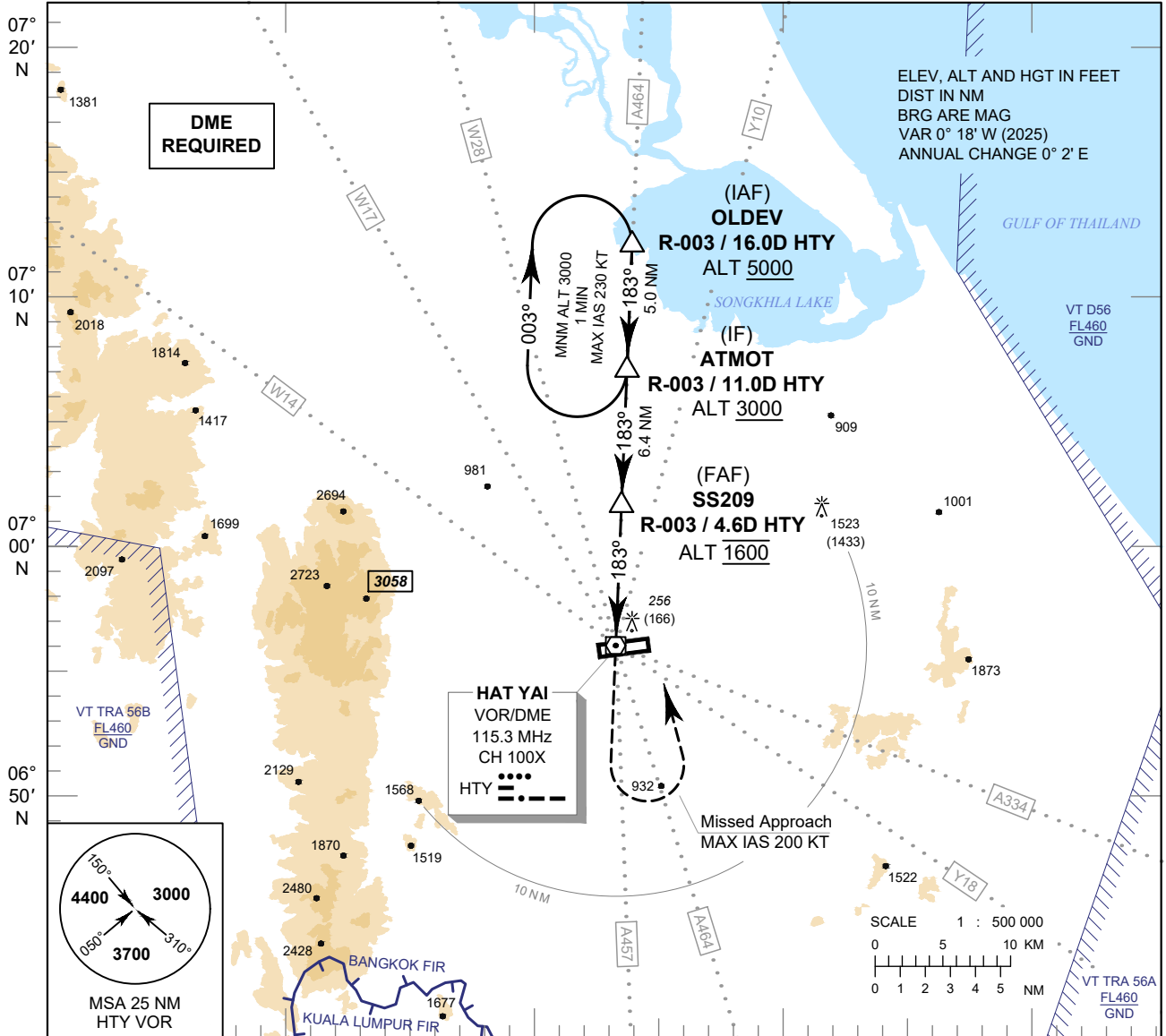
**INSTRUMENT APPROACH CHART - ICAO**

**AERODROME ELEV 90 FT**  
**HEIGHTS RELATED TO AERODROME ELEV**

APP : 126.7, 301.5  
 TWR : 118.1, 275.8  
 GND : 121.9, 257.8  
 ATIS : 128.8

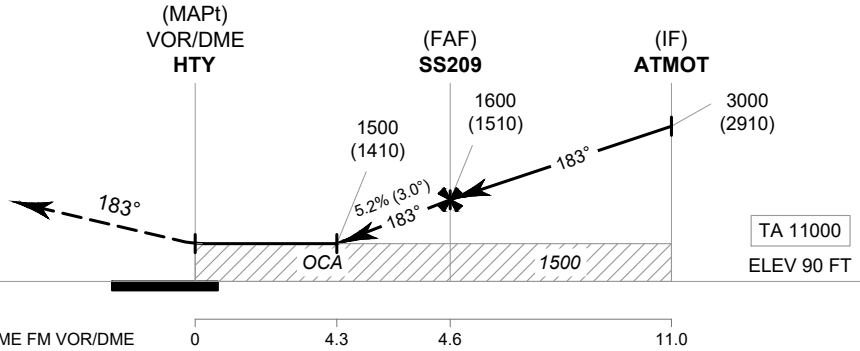
**SONGKHLA / Hat Yai Intl (VTSS)**

**VOR a**



**MISSED APPROACH :**

**No turn before MAPT.**  
**Speed restricted to**  
**MAX IAS 200 KT until after turn.**  
 Climb straight ahead to 2000 FT,  
 then turn left to intercept outbound  
 R-003 HTY VOR and proceed  
 to ATMOT at minimum 3000 FT  
 and hold or as directed by ATC.



OCA/H	A	B	C	D	Distance (HTY)	4.3D			FAF				
Straight - in Approach	Not authorized				Altitude (Height)	1500 (1410)			1600 (1510)				
					Ground Speed	knot	70	90	100	120	140	160	
Circling (OCH AAL)	900 (810)		1500 (1410)		Rate of Descent	5.2%	ft/min	369	474	527	632	737	843

CHANGE : MAG VAR. PDR.