

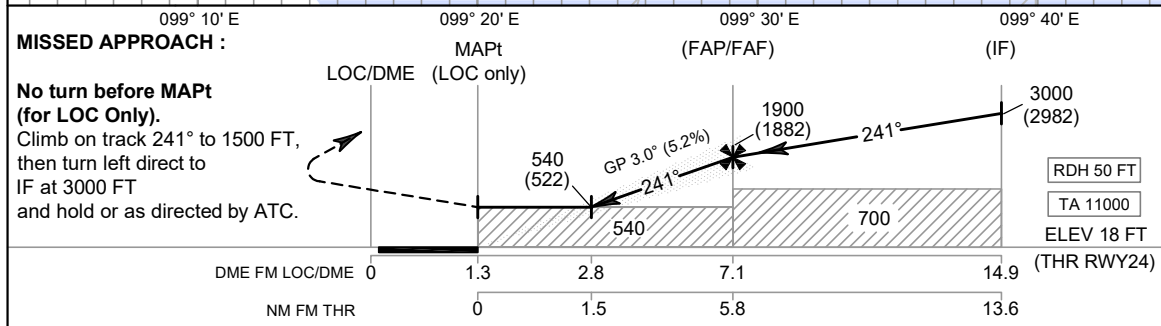
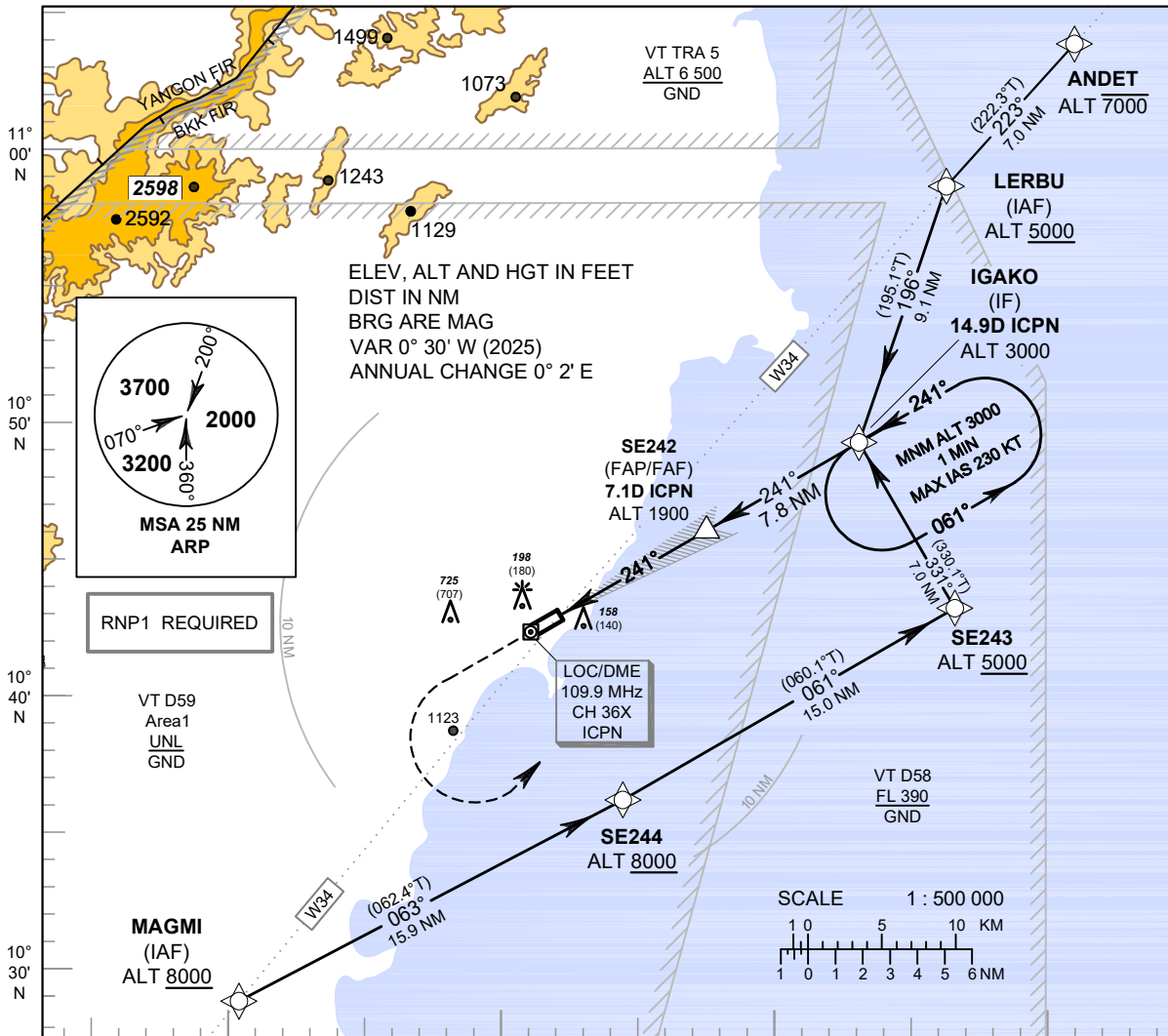
**INSTRUMENT APPROACH CHART - ICAO**

**AERODROME ELEV 18 FT**  
 HEIGHTS RELATED TO THR RWY24 - ELEV 18 FT

APP : 122.6  
 TWR : 122.15 , 236.6  
 ATIS : 128.45

**CHUMPHON / Chumphon (VTSE)**

**ILS or LOC z RWY24**



CHANGE: MAG VAR: PDR:

OCA/H		A	B	C	D	GS out	Distance to ICPN	2.8 D	3 D	4 D	5 D	6 D	FAF	
Straight - in Approach	CAT I	390 (372)						Altitude (Height)	540 (522)	605 (587)	920 (902)	1235 (1217)	1550 (1532)	1900 (1882)
	LOC only	540 (522)					Ground speed	knot	70	90	100	120	140	160
Circling (OCH AAL)		1500 (1482)					Rate of descent (5.2%)	ft/min	369	474	527	632	737	843