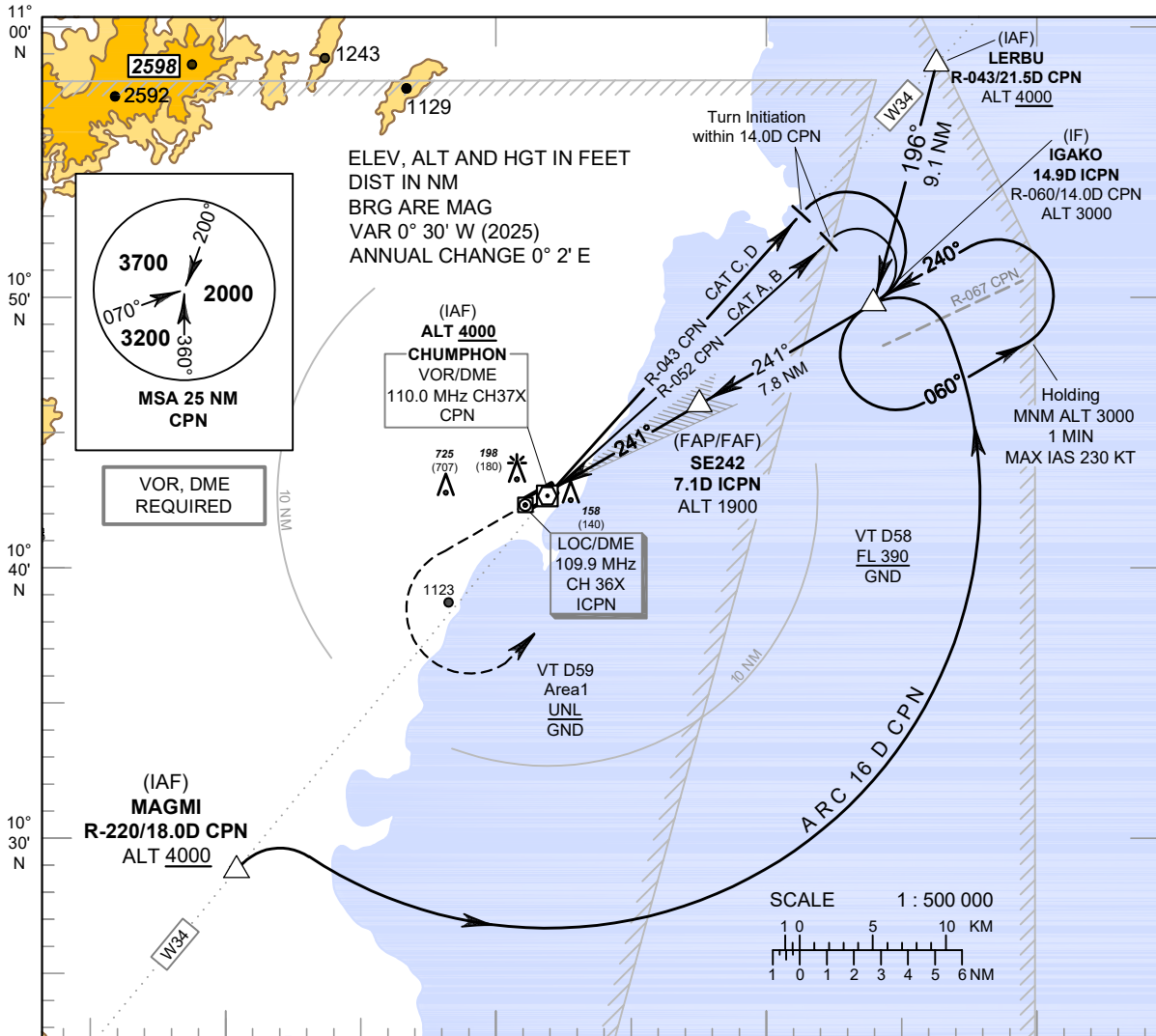


INSTRUMENT APPROACH CHART - ICAO

AERODROME ELEV 18 FT
 HEIGHTS RELATED TO THR RWY24 - ELEV 18 FT

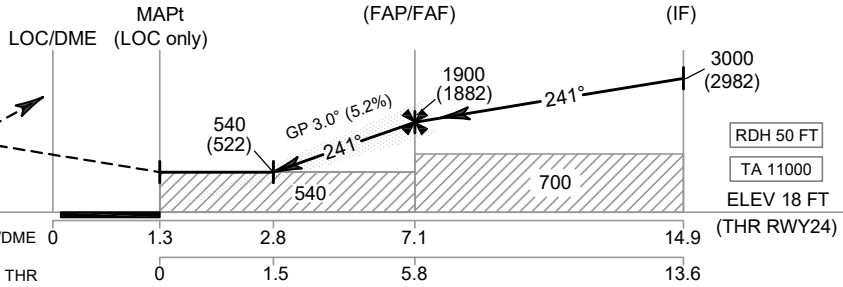
APP : 122.6
 TWR : 122.15 , 236.6
 ATIS : 128.45

CHUMPHON / Chumphon (VTSE)
 ILS or LOC y RWY24



MISSED APPROACH :

No turn before MAPt.
 Climb straight ahead to 1500 FT, then turn left to intercept outbound R-060 CPN VOR, then proceed to IF at 3000 FT and hold or as directed by ATC.



CHANGE: MAG VAR.

OCA/H		A	B	C	D	GS out	Distance to ICPN	2.8 D	3 D	4 D	5 D	6 D	FAF	
Straight - in Approach	CAT I	390 (372)						Altitude (Height)	540 (522)	605 (587)	920 (902)	1235 (1217)	1550 (1532)	1900 (1882)
	LOC only	540 (522)					Ground speed	knot	70	90	100	120	140	160
Circling (OCH AAL)		1500 (1482)					Rate of descent (5.2%)	ft/min	369	474	527	632	737	843