

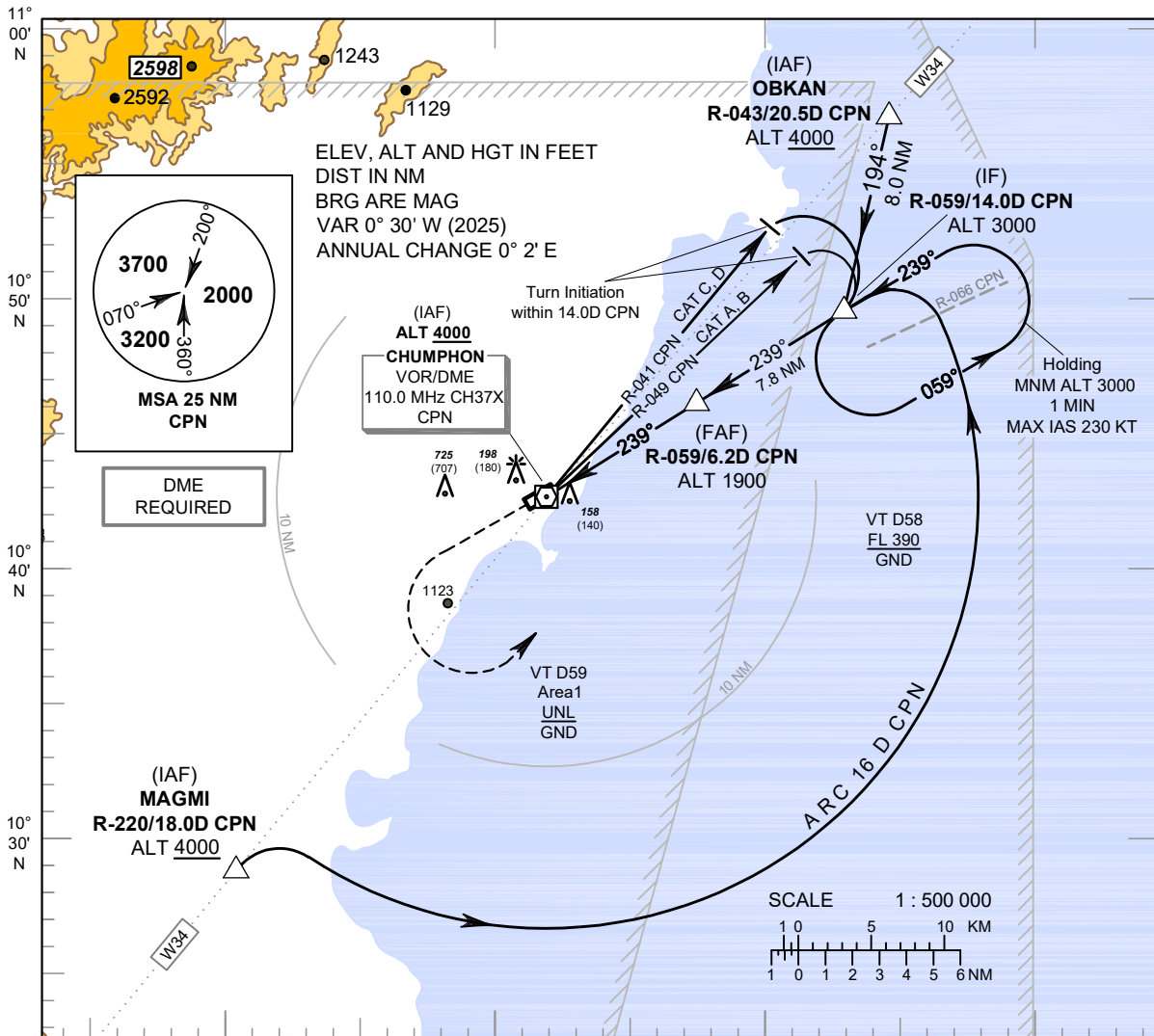
**INSTRUMENT
APPROACH
CHART - ICAO**

AERODROME ELEV 18 FT
HEIGHTS RELATED TO
AERODROME ELEV

APP : 122.6
TWR : 122.15 , 236.6
ATIS : 128.45

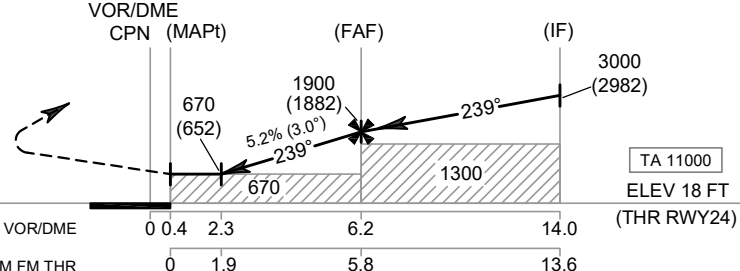
CHUMPHON / Chumphon (VTSE)

VOR RWY24



MISSED APPROACH :

No turn before MAPt.
Climb on R-059 to CPN VOR, then climb straight ahead to 1500 FT, and turn left to intercept outbound R-059 CPN VOR, then proceed to IF at 3000 FT and hold or as directed by ATC.



CHANGE: MAG VAR.

OCA/H	A	B	C	D	Distance to CPN	2.3 D	3 D	4 D	5 D	6 D	FAF	
Straight - in Approach	670 (652)				Altitude (Height)	670 (652)	890 (872)	1205 (1187)	1520 (1502)	1840 (1822)	1900 (1882)	
					Ground speed	knot	70	90	100	120	140	160
Circling (OCH AAL)	1500 (1482)				Rate of descent (5.2%)	ft/min	369	474	527	632	737	843