

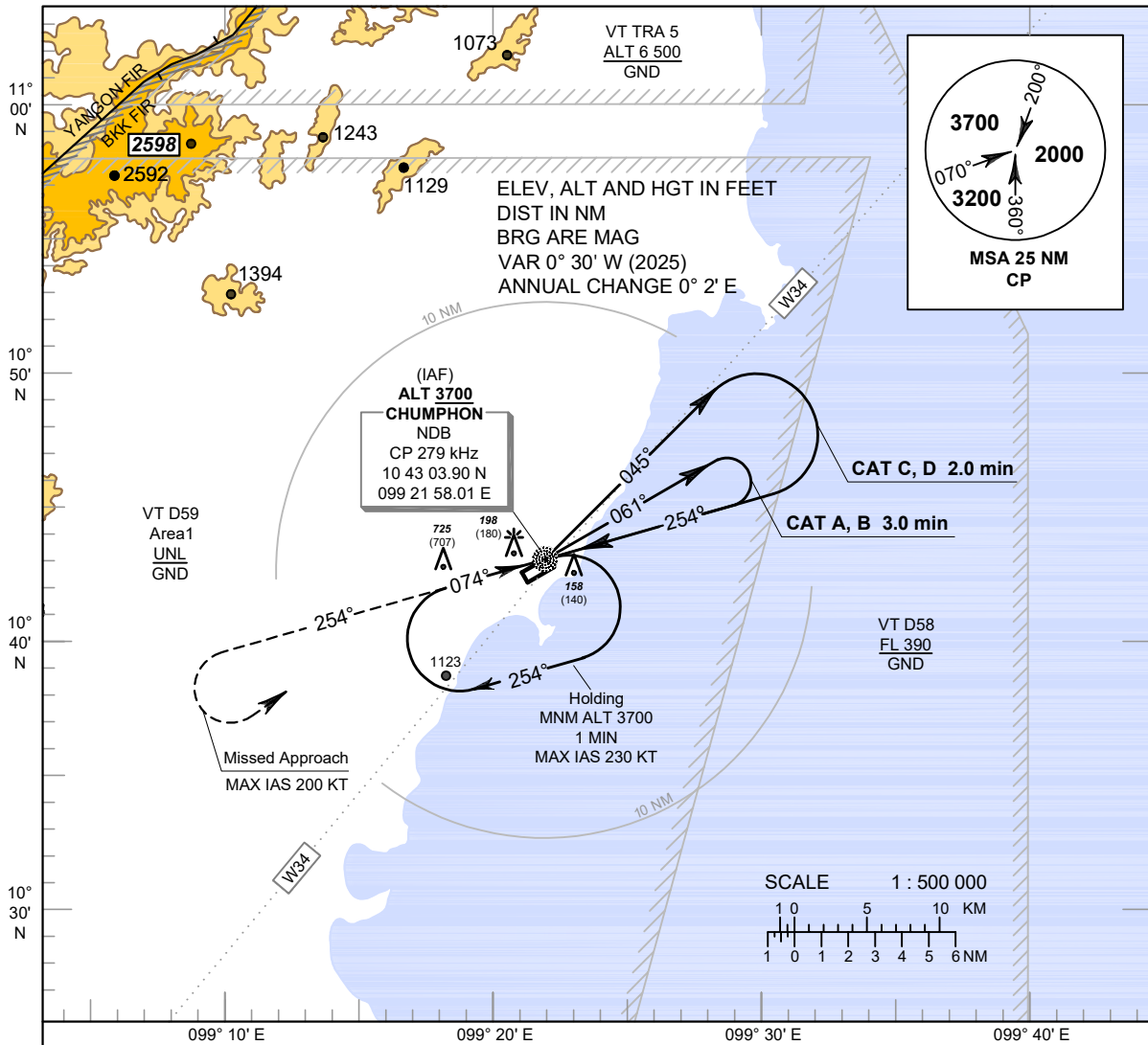
**INSTRUMENT  
APPROACH  
CHART - ICAO**

**AERODROME ELEV 18 FT  
HEIGHTS RELATED TO  
AERODROME ELEV**

APP : 122.6  
TWR : 122.15 , 236.6  
ATIS : 128.45

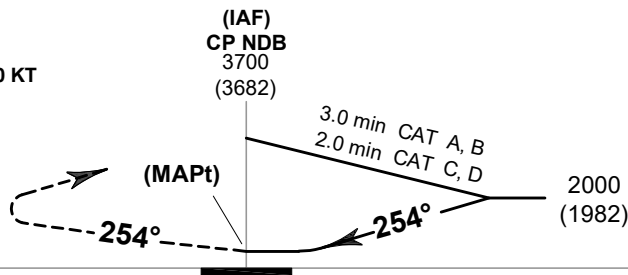
**CHUMPHON / Chumphon (VTSE)**

**NDB RWY24**



**MISSED APPROACH :**  
No turn before MAPt.  
Speed restricted to MAX IAS 200 KT  
until after turn.

Climb on outbound BRG - 254  
until 2000 FT, then turn left  
to CP NDB at 3700 FT  
and hold or as directed by ATC.



TA 11000

ELEV 18 FT  
(THR RWY24)

CHANGE: MAG VAR: PDR.

OCA/H	A	B	C	D
Straight - in Approach	580 (562)			
Circling (OCH AAL)	1500 (1482)			