

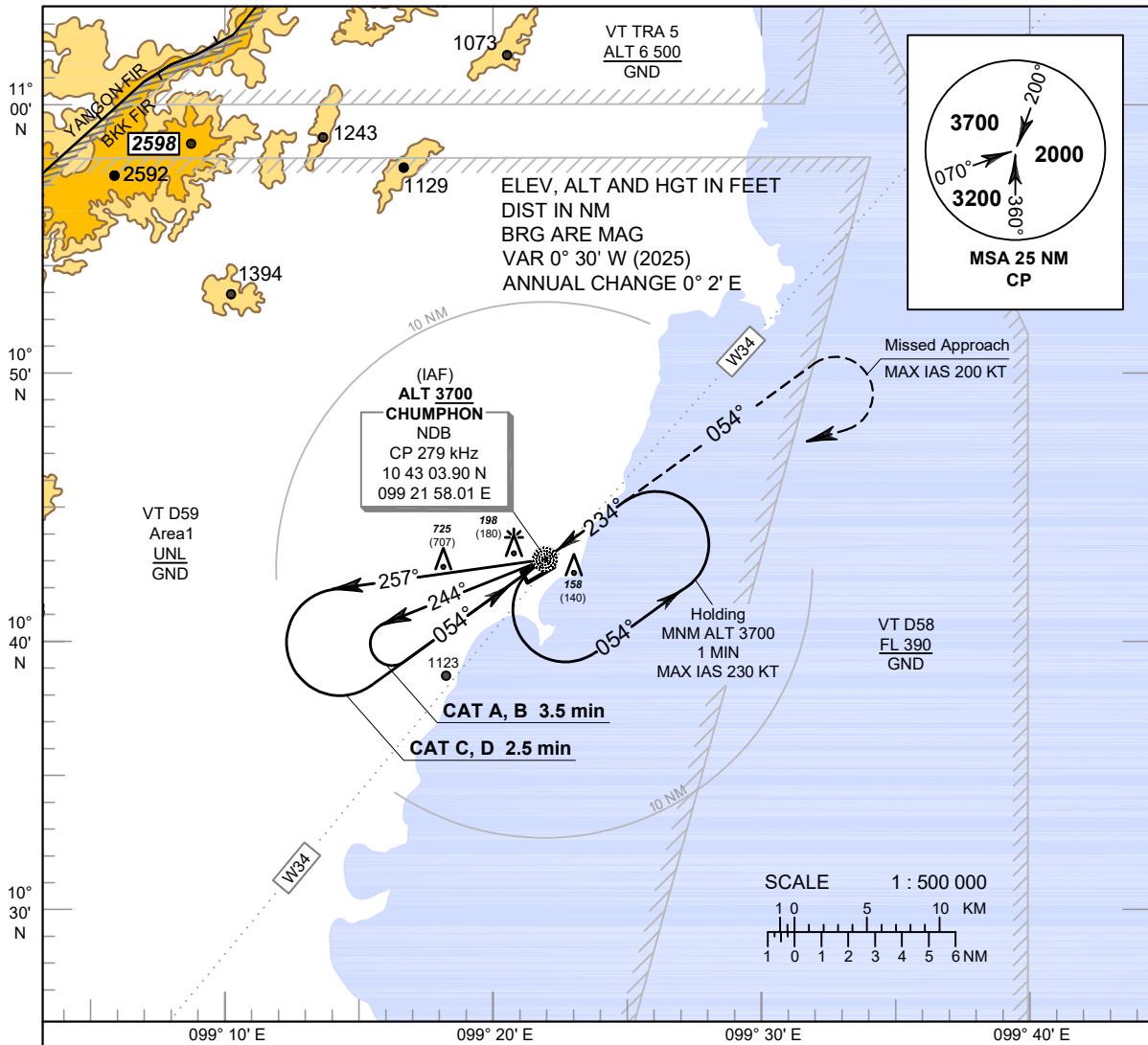
**INSTRUMENT
APPROACH
CHART - ICAO**

**AERODROME ELEV 18 FT
HEIGHTS RELATED TO
AERODROME ELEV**

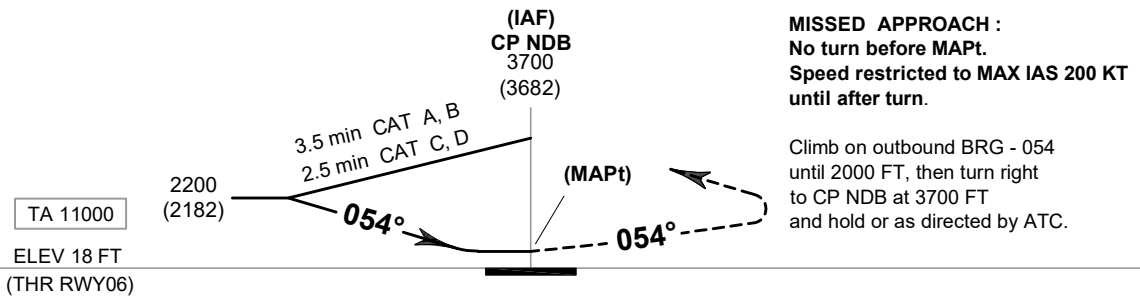
APP : 122.6
TWR : 122.15 , 236.6
ATIS : 128.45

CHUMPHON / Chumphon (VTSE)

NDB RWY06



CHANGE: MAG VAR: PDR:



MISSED APPROACH :
No turn before MAPt.
Speed restricted to MAX IAS 200 KT
until after turn.

Climb on outbound BRG - 054 until 2000 FT, then turn right to CP NDB at 3700 FT and hold or as directed by ATC.

OCA/H	A	B	C	D
Straight - in Approach	1470 (1452)			
Circling (OCH AAL)	1500 (1482)			