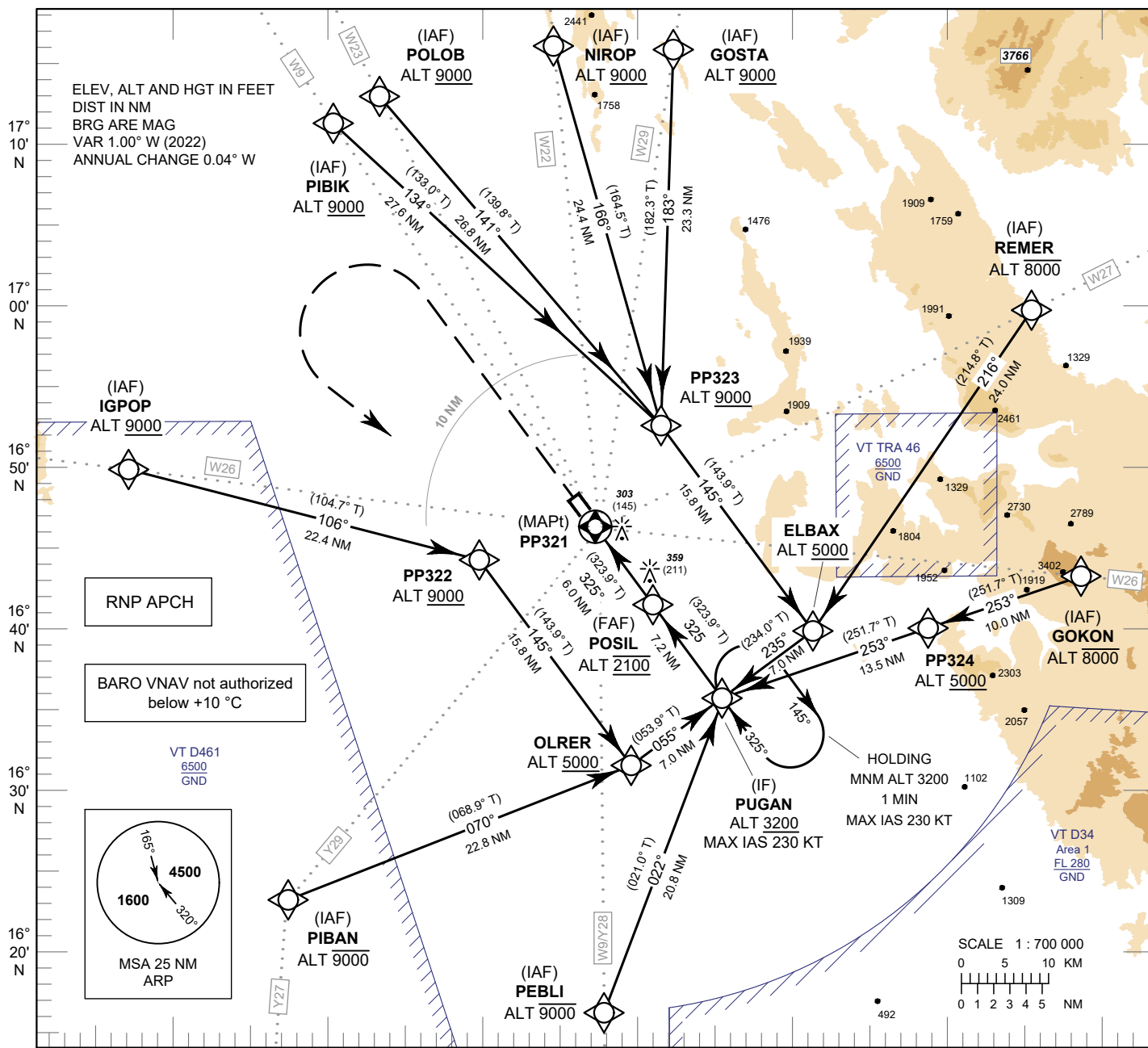


**INSTRUMENT  
APPROACH  
CHART - ICAO**

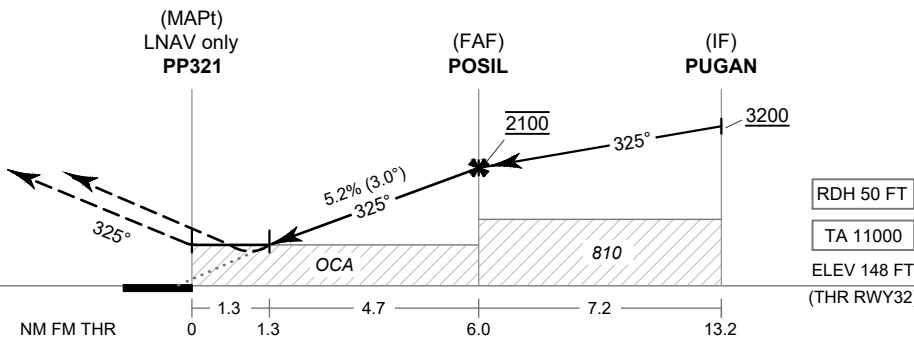
**AERODROME ELEV 148 FT  
HEIGHT RELATED TO  
THR RWY32 - ELEV 148 FT**

APP : 120.7, 284.0  
TWR : 118.9, 236.6  
GND : 121.9  
ATIS : 127.4

**PHITSANULOK / Phitsanulok (VTTP)  
RNP RWY32**



**MISSED APPROACH :**  
**No turn before MAPt.**  
Climb on track 325° to 3000 FT,  
then turn left direct to PUGAN  
at minimum 3200 FT  
and hold or as directed by ATC.



OCA/H	A	B	C	D	NM to NEXT WPT	1.3 NM	2 NM	3 NM	4 NM	5 NM	FAF	
LNAV/VNAV	470 (322)				Altitude (Height)	610 (462)	830 (682)	1145 (997)	1460 (1312)	1780 (1632)	2100 (1952)	
LNAV	610 (462)				Ground Speed	knot	70	90	100	120	140	160
Circling (OCH AAL)	1000 (852)				Rate of descent	ft/min	369	474	527	632	737	843

CHANGE: PDR.