

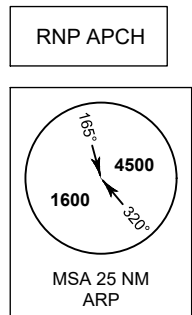
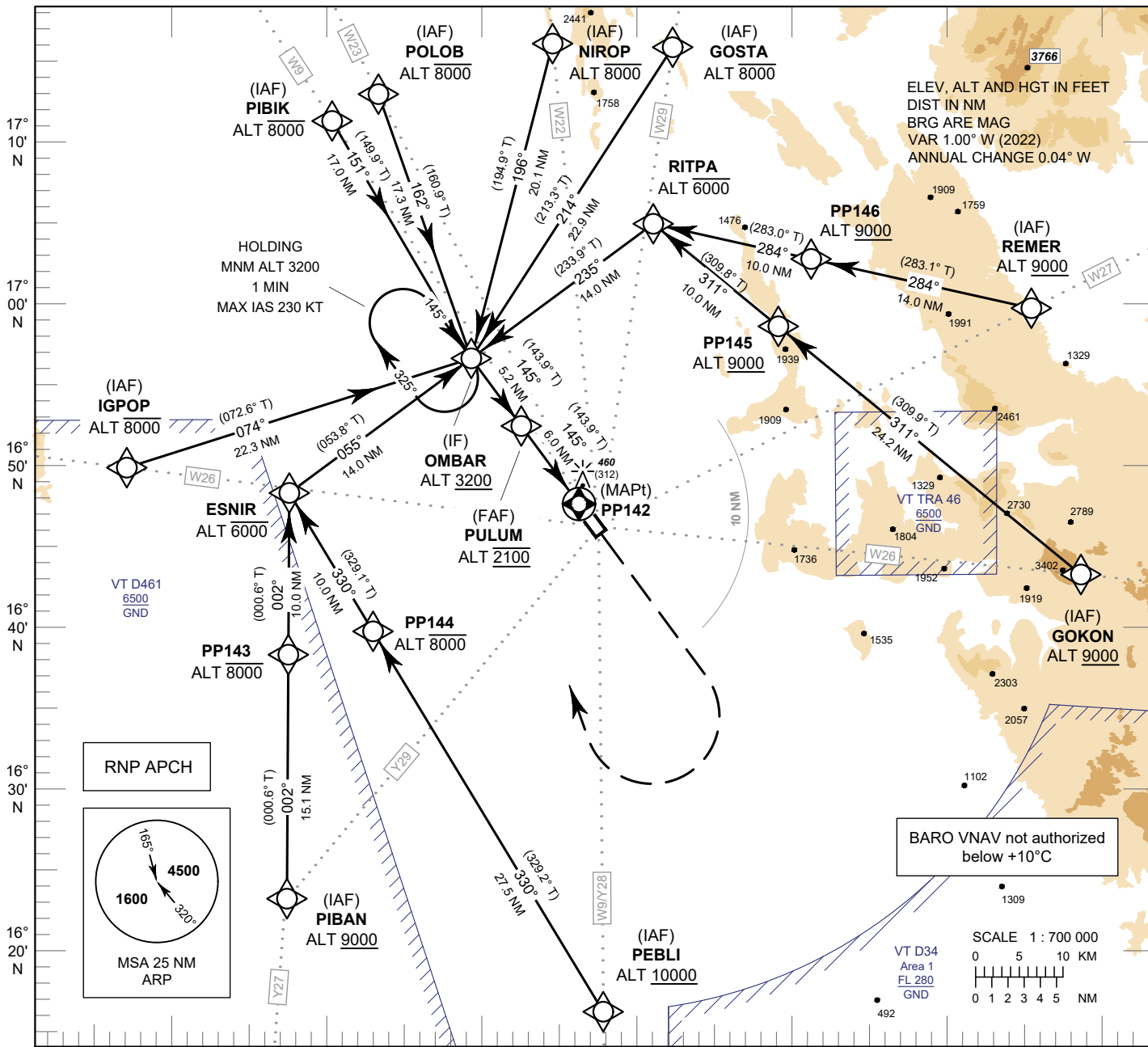
**INSTRUMENT
APPROACH
CHART - ICAO**

**AERODROME ELEV 148 FT
HEIGHT RELATED TO
THR RWY14 - ELEV 148 FT**

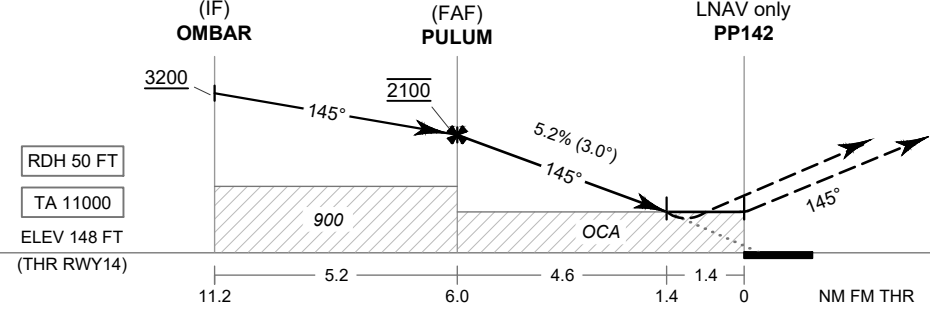
APP : 120.7, 284.0
TWR : 118.9, 236.6
GND : 121.9
ATIS : 127.4

PHITSANULOK / Phitsanulok (VTTP)

RNP RWY14



099° 50' E 100° 00' E 100° 10' E 100° 20' E 100° 30' E 100° 40' E 100° 50' E



MISSED APPROACH :
No turn before MAPt.
Climb on track 145° to 3000 FT,
then turn right direct to OMBAR
at minimum 3200 FT
and hold or as directed by ATC.

OCA/H	A	B	C	D	NM to NEXT WPT	FAF	5 NM	4 NM	3 NM	2 NM	1.4 NM	
LNAV/VNAV	640 (492)				Altitude (Height)	2100 (1952)	1780 (1632)	1460 (1312)	1145 (997)	830 (682)	640 (492)	
LNAV					Ground Speed	knot	70	90	100	120	140	160
Circling (OCH AAL)	1000 (852)				Rate of descent 5.2%	ft/min	369	474	527	632	737	843

CHANGE: PDR.