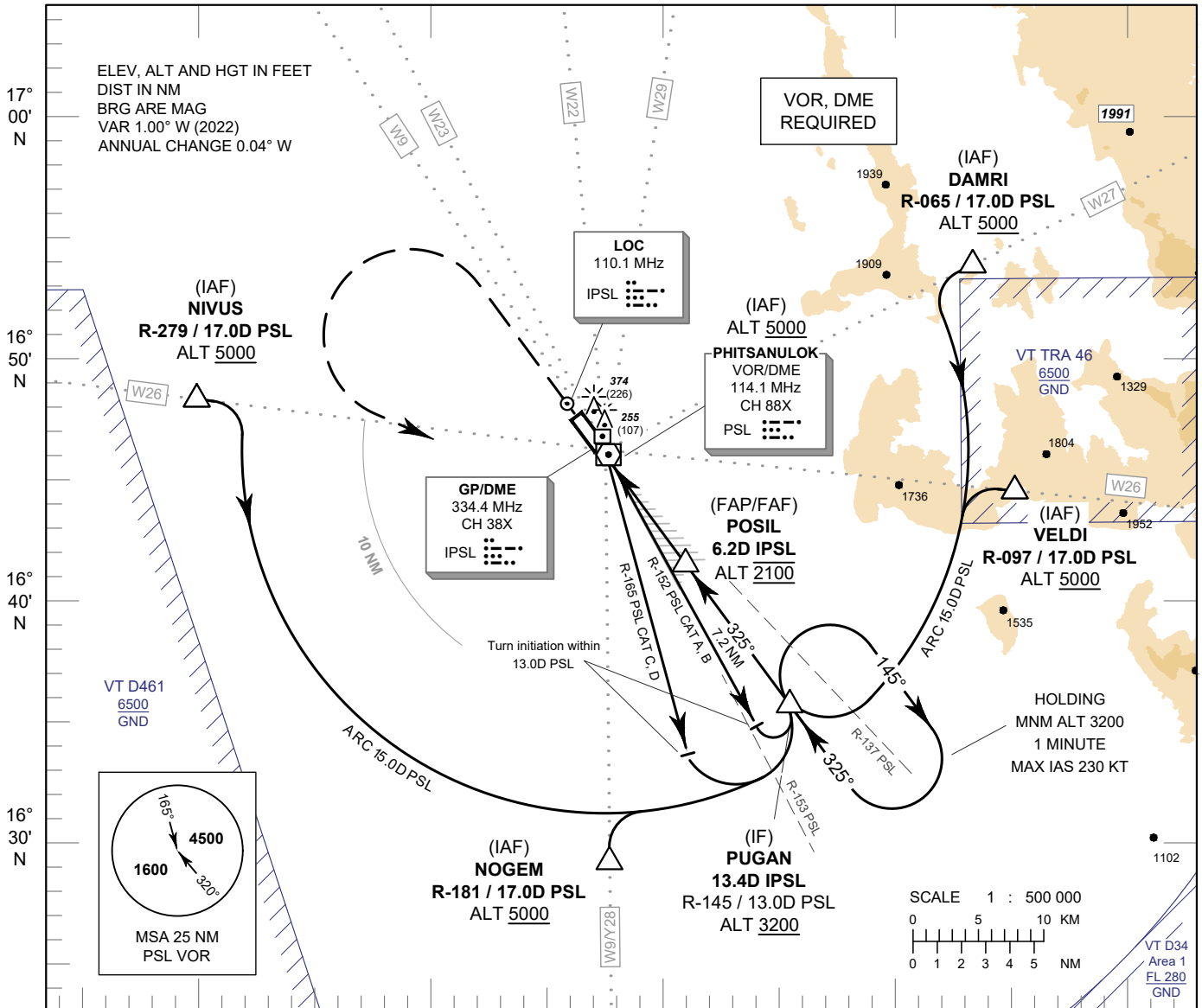


**INSTRUMENT
APPROACH
CHART - ICAO**

**AERODROME ELEV 148 FT
HEIGHT RELATED TO
THR RWY32 - ELEV 148 FT**

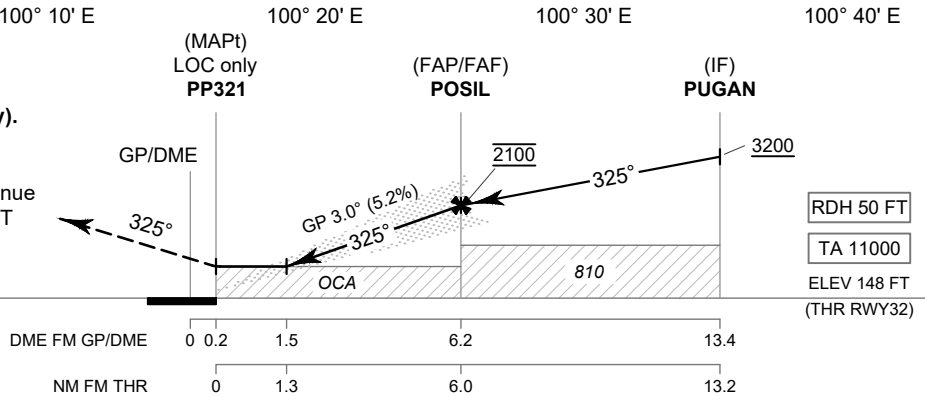
APP : 120.7, 284.0
TWR : 118.9, 236.6
GND : 121.9
ATIS : 127.4

PHITSANULOK / Phitsanulok (VTPP)
ILS or LOC y RWY32



MISSED APPROACH :

No turn before MAPt (for LOC only).
Climb straight ahead to 3000 FT,
then turn left to intercept
outbound R-145 PSL VOR and continue
climb to PUGAN at minimum 3200 FT
and hold as directed by ATC.



CHANGE: PDR.

OCA/H		A	B	C	D	GS OUT	Distance (IPSL)	1.5D	2D	3D	4D	5D	6D	FAF
Straight-in Approach	CAT I	370 (222)					Altitude (Height)	610 (462)	610	765 (617)	1080 (932)	1400 (1252)	1715 (1567)	2030 (1882)
	LOC only	610 (462)				Ground Speed		knot	70	90	100	120	140	160
Circling (OCH AAL)		1000 (852)				Rate of descent 5.2%	ft/min	369	474	527	632	737	843	