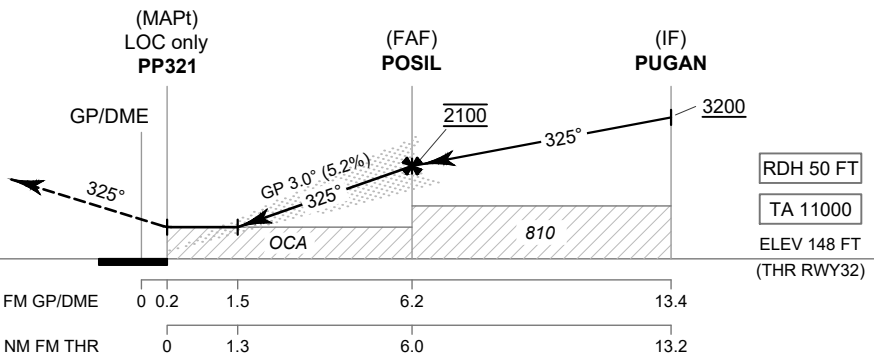


MISSED APPROACH :
No turn before MAPt (for LOC only).
Climb straight ahead to 3000 FT,
then turn left direct to PUGAN
at minimum 3200 FT
and hold or as directed by ATC.



OCA/H		A	B	C	D	GS OUT	Distance (IPSL)	1.5D	2D	3D	4D	5D	6D	FAF
Straight-in Approach	CAT I	370 (222)					Altitude (Height)	610 (462)	610	765 (617)	1080 (932)	1400 (1252)	1715 (1567)	2030 (1882)
		610 (462)				Ground Speed		knot	70	90	100	120	140	160
LOC only		1000 (852)				Rate of descent	5.2%	ft/min	369	474	527	632	737	843
Circling (OCH AAL)														

CHANGE: PDR.