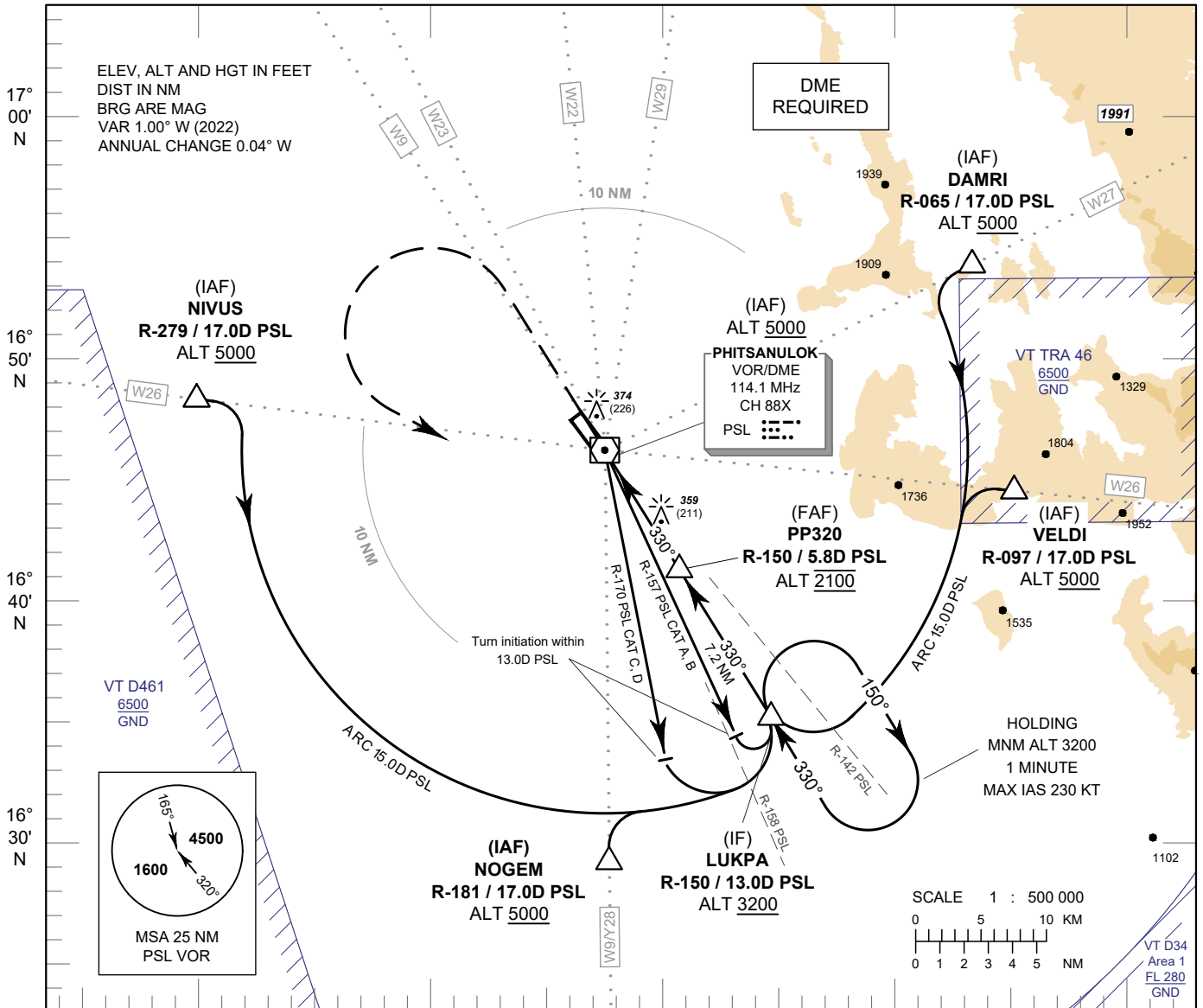


**INSTRUMENT
APPROACH
CHART - ICAO**

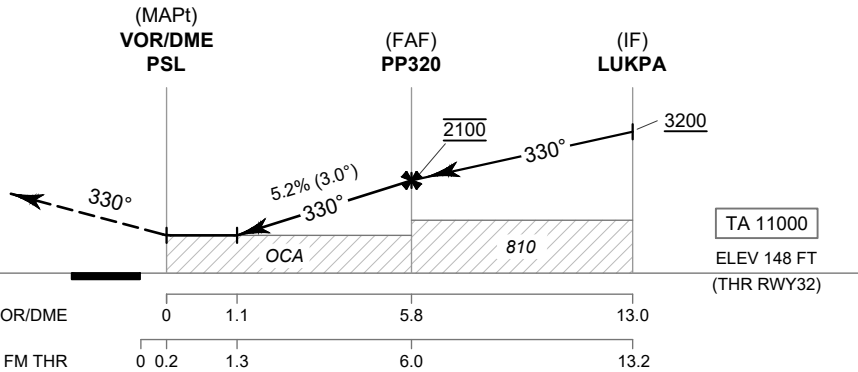
**AERODROME ELEV 148 FT
HEIGHT RELATED TO
AERODROME ELEV**

APP : 120.7, 284.0
TWR : 118.9, 236.6
GND : 121.9
ATIS : 127.4

**PHITSANULOK / Phitsanulok (VTPP)
VOR RWY32**



MISSED APPROACH :
No turn before MAPt.
Climb straight ahead to 3000 FT,
then turn left to intercept
outbound R-150 PSL VOR and continue
climb to LUKPA at minimum 3200 FT
and hold as directed by ATC.



OCA/H	A	B	C	D	Distance (PSL)	1.1D	2D	3D	4D	5D	FAF	
Straight-in Approach	610 (462)				Altitude (Height)	610 (462)	895 (747)	1210 (1062)	1525 (1377)	1840 (1692)	2100 (1952)	
					Ground Speed	knot	70	90	100	120	140	160
Circling (OCH AAL)	1000 (852)				Rate of descent 5.2%	ft/min	369	474	527	632	737	843

CHANGE: PDR.