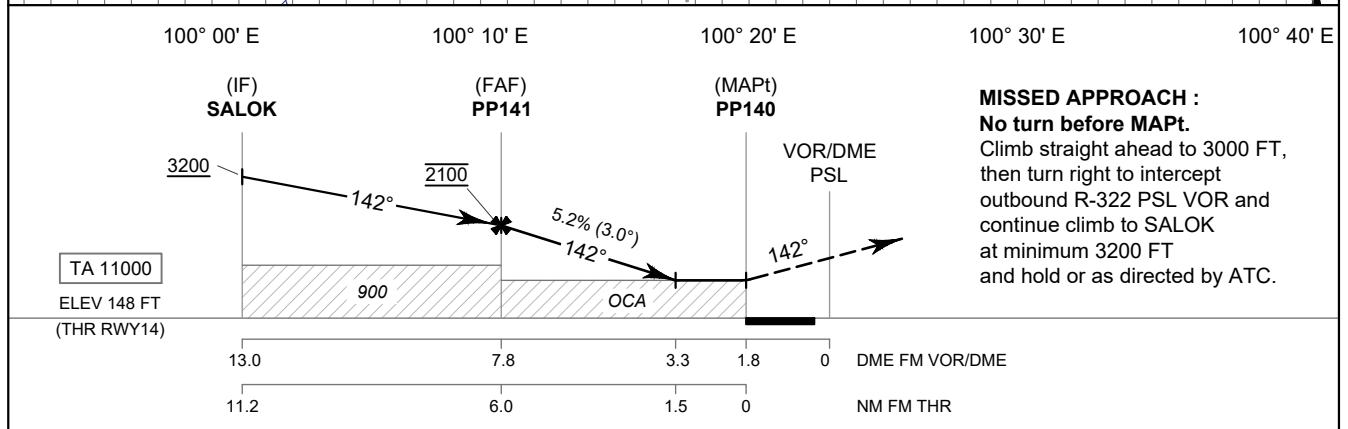
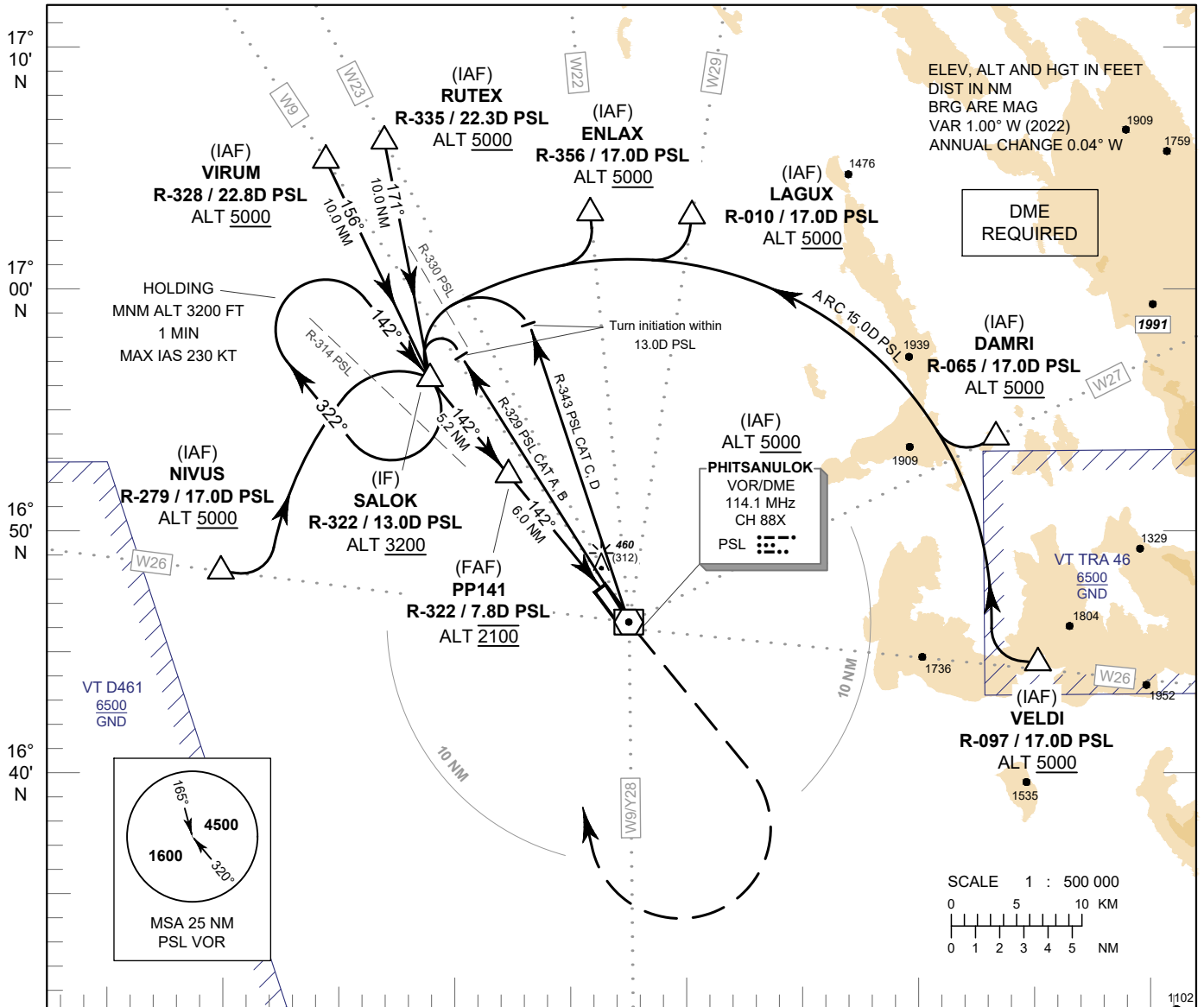


**INSTRUMENT
APPROACH
CHART - ICAO**

**AERODROME ELEV 148 FT
HEIGHT RELATED TO
AERODROME ELEV**

APP : 120.7, 284.0
TWR : 118.9, 236.6
GND : 121.9
ATIS : 127.4

PHITSANULOK / Phitsanulok (VTPP)
VOR RWY14



MISSED APPROACH :
No turn before MAPt.
Climb straight ahead to 3000 FT,
then turn right to intercept
outbound R-322 PSL VOR and
continue climb to SALOK
at minimum 3200 FT
and hold or as directed by ATC.

OCA/H	A	B	C	D	Distance (PSL)	FAF	7D	6D	5D	4D	3.3D	
					Straight-in Approach	670 (522)				Altitude (Height)	2100 (1952)	1840 (1692)
Circling (OCH AAL)	1000 (852)				Ground Speed	knot	70	90	100	120	140	160
					Rate of descent 5.2%	ft/min	369	474	527	632	737	843

CHANGE: PDR.