

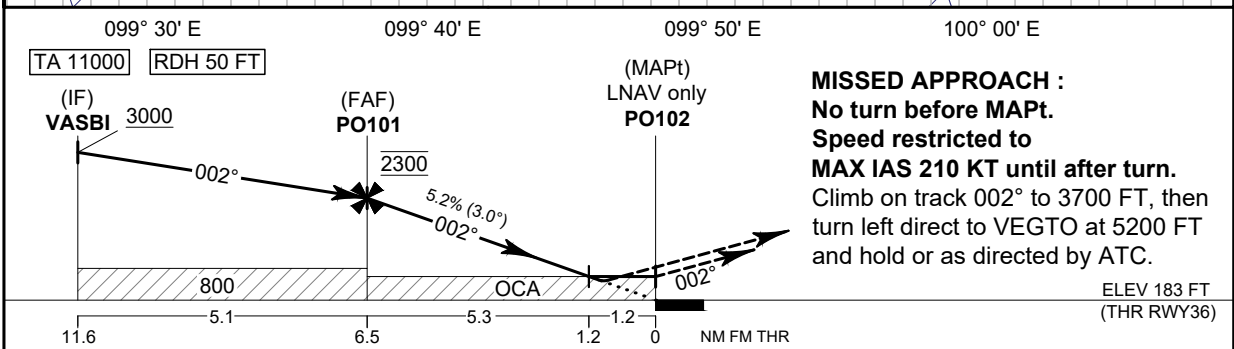
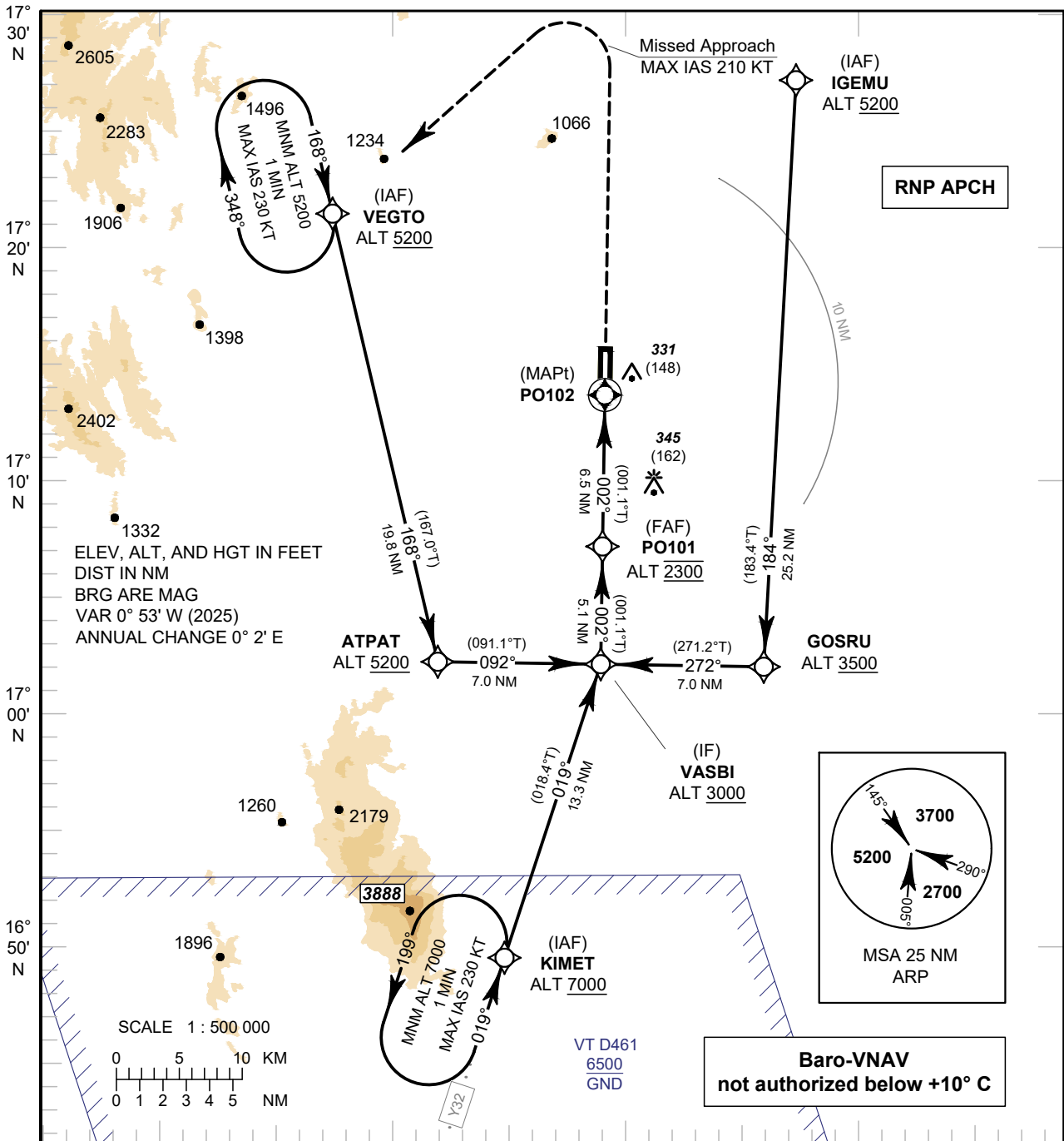
**INSTRUMENT
APPROACH
CHART - ICAO**

AERODROME ELEV 184 FT
HEIGHTS RELATED TO
THR RWY36 - ELEV 183 FT

APP : 120.7
TWR : 122.9

SUKHOTHAI / Sukhothai (VTPO)

RNP RWY36



MISSED APPROACH :
No turn before MAPt.
Speed restricted to
MAX IAS 210 KT until after turn.
Climb on track 002° to 3700 FT, then
turn left direct to VEGTO at 5200 FT
and hold or as directed by ATC.

OCA/H	A	B	C	D	NM to NEXT WPT	FAF	6 NM	5 NM	4 NM	3 NM	2 NM	1.2 NM
LNNAV/VNAV	500 (317)				Altitude (Height)	2300 (2117)	2125 (1942)	1810 (1627)	1495 (1312)	1180 (997)	865 (682)	600 (417)
LNNAV	600 (417)				Ground Speed	knot	70	90	100	120	140	160
Circling (OCH AAL)	800 (616)	910 (726)			Rate of descent	ft/min	369	474	527	632	737	843

CHANGE: PDR.