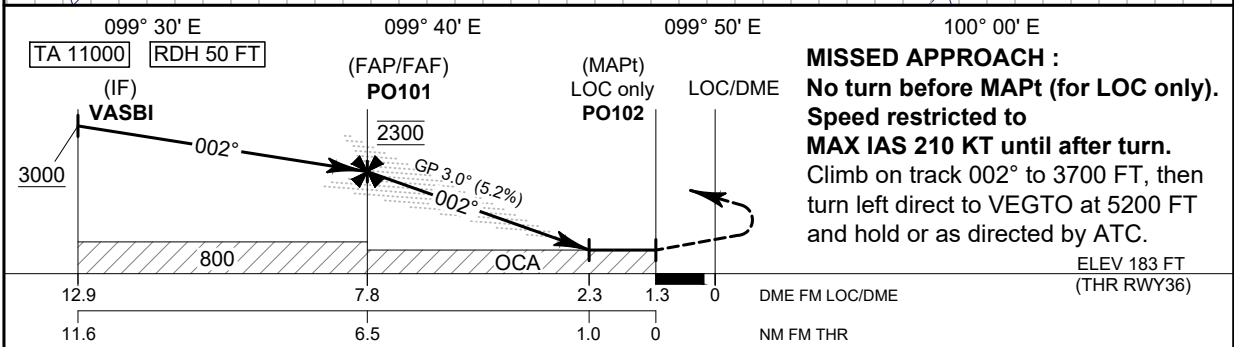
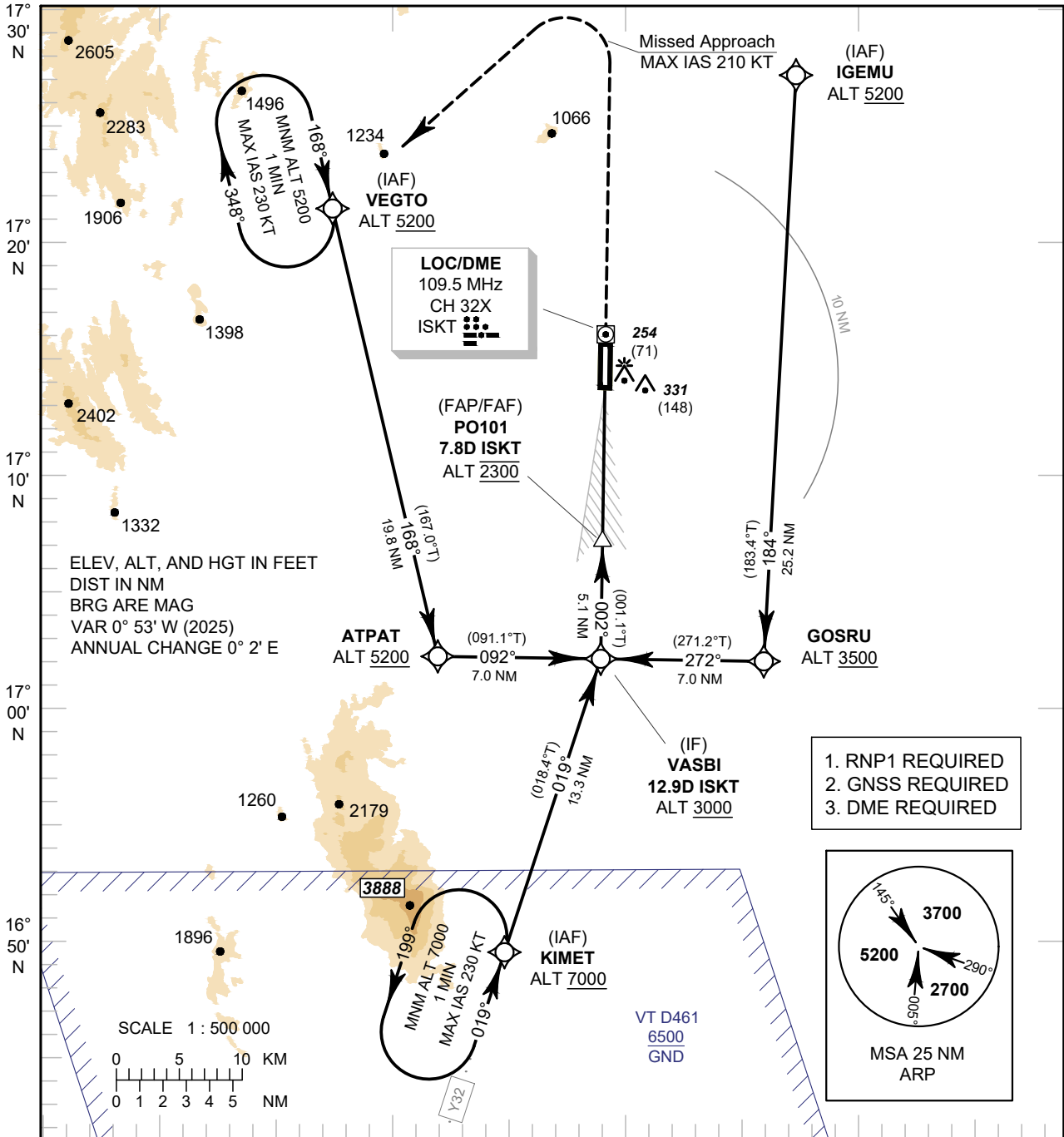


**INSTRUMENT  
APPROACH  
CHART - ICAO**

**AERODROME ELEV 184 FT  
HEIGHTS RELATED TO  
THR RWY36 - ELEV 183 FT**

APP : 120.7  
TWR : 122.9

**SUKHOTHAI / Sukhothai (VTPO)  
ILS or LOC RWY36**



**MISSED APPROACH :**  
No turn before MAPt (for LOC only).  
Speed restricted to  
MAX IAS 210 KT until after turn.  
Climb on track 002° to 3700 FT, then  
turn left direct to VEGTO at 5200 FT  
and hold or as directed by ATC.

OCA/H		A	B	C	D	GS OUT	Distance (ISKT)	FAF	7D	6D	5D	4D	3D	2.3D
Straight-in Approach	CAT I	420 (237)					Altitude (Height)	2300 (2117)	2030 (1847)	1715 (1532)	1400 (1217)	1085 (902)	770 (587)	560 (377)
		560 (377)				Ground Speed	knot	70	90	100	120	140	160	
LOC Only		800 (616)				Rate of descent	ft/min	369	474	527	632	737	843	
Circling (OCH AAL)		910 (726)												

CHANGE: PDR.