

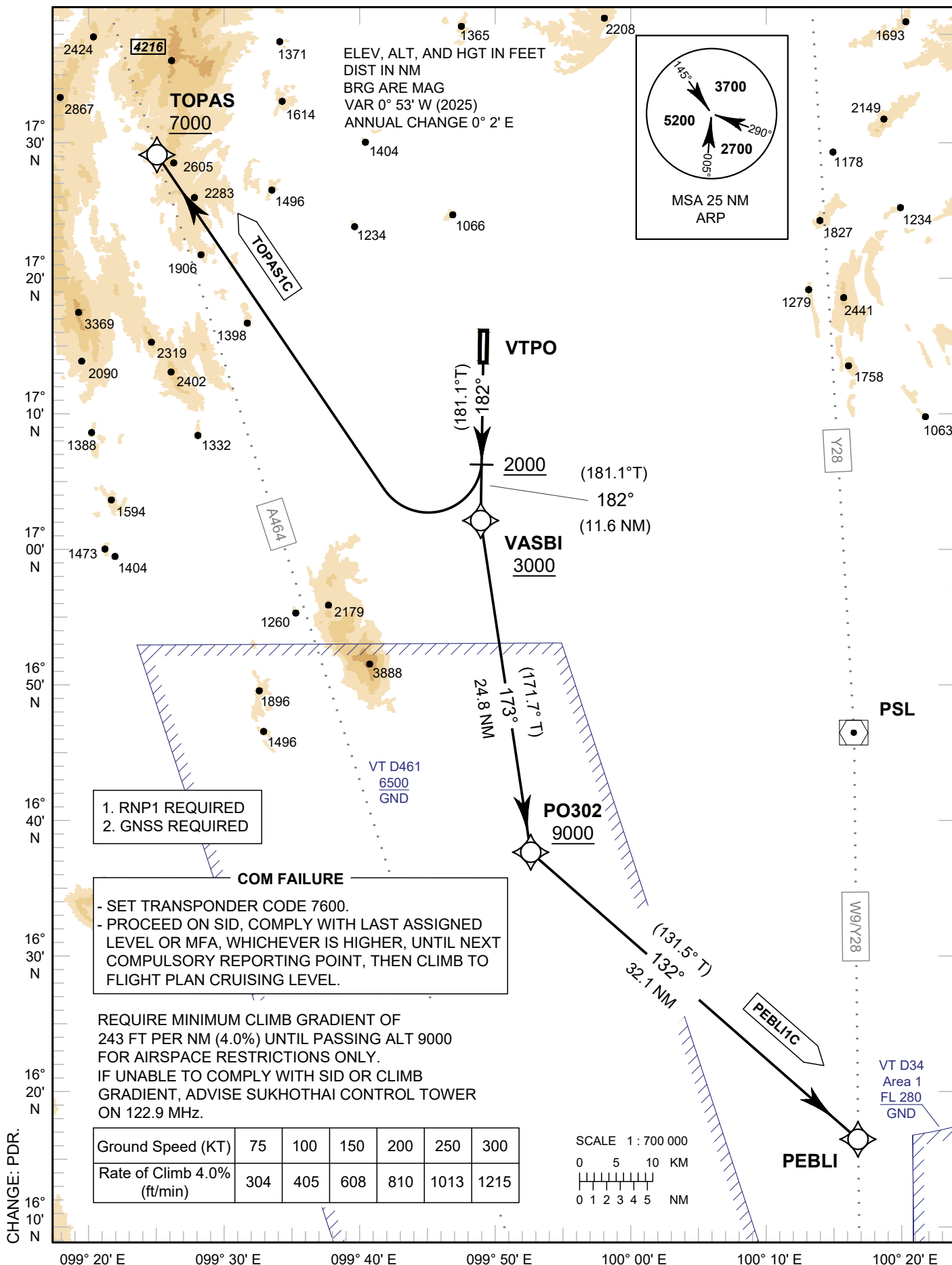
**STANDARD DEPARTURE CHART -
INSTRUMENT (SID) - ICAO**

TRANSITIONAL ALTITUDE
11000 FT

APP : 120.7
TWR : 122.9

**SUKHOTHAI / Sukhothai (VTPO)
RNAV RWY18**

PEBL1C TOPAS1C



CHANGE: PDR.