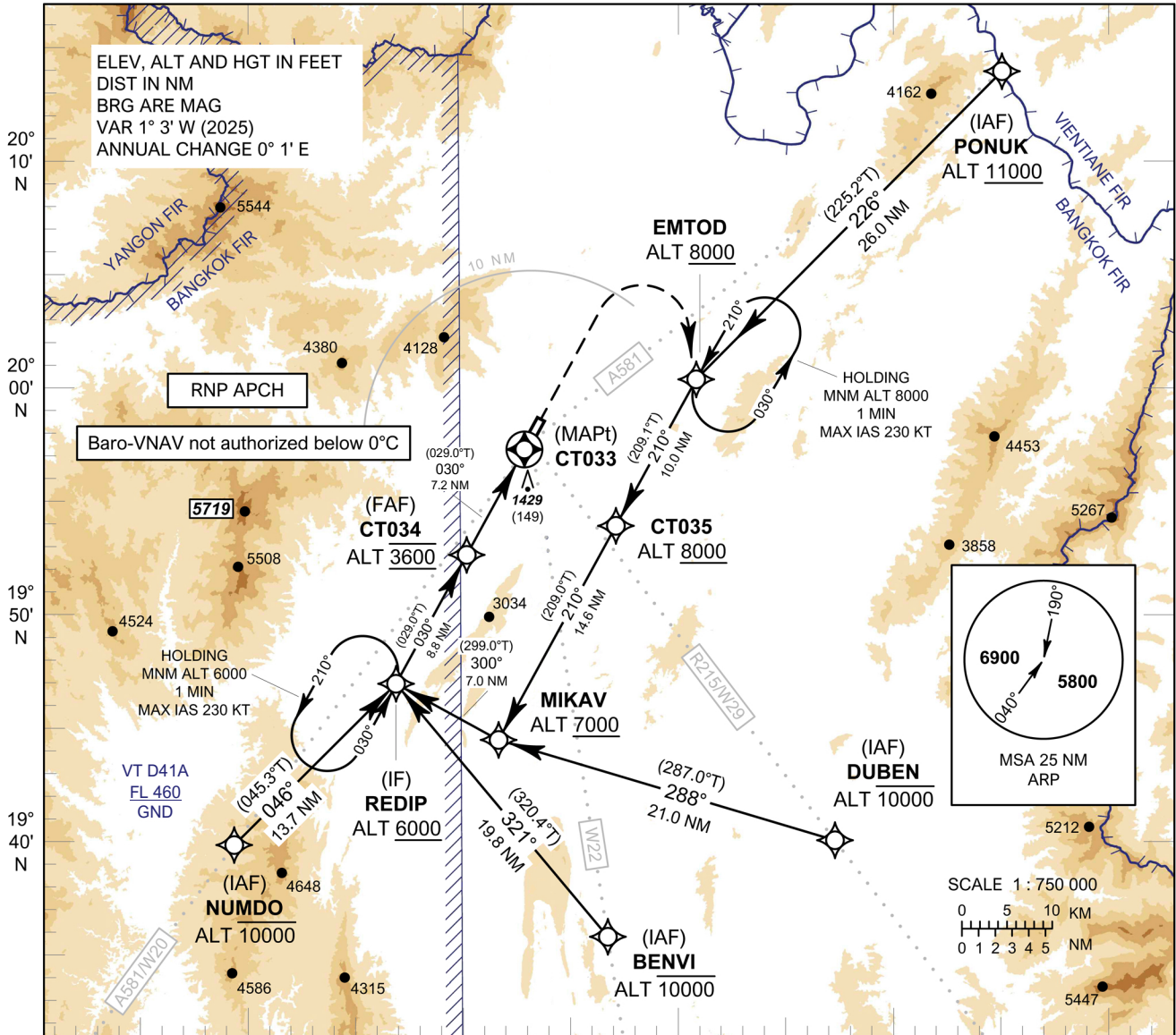


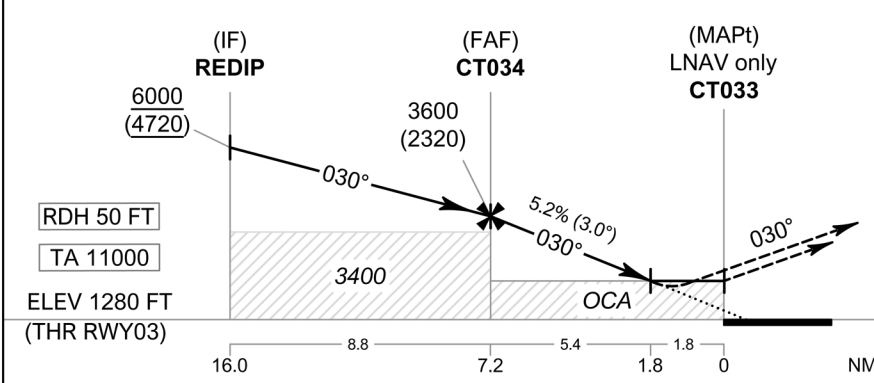
INSTRUMENT APPROACH CHART - ICAO **AERODROME ELEV 1280 FT**
 HEIGHTS RELATED TO
 THR RWY03 - ELEV 1280 FT

APP : 120.05 , 257.8
 TWR : 118.4 , 236.6
 ATIS : 127.85

CHIANG RAI /
Mae Fah Luang-Chiang Rai Intl (VTCT)
RNP RWY03



099° 40' E 099° 50' E 100° 00' E 100° 10' E 100° 20' E



MISSED APPROACH :
No turn before MAPt.
 Climb on track 030° to 4500 FT,
 then turn right direct to EMTOD
 at minimum 8000 FT and hold
 or as directed by ATC.

OCA/H	A	B	C	D	NM to NEXT WPT	FAF	7 NM	6 NM	5 NM	4 NM	3 NM	2 NM	1.8 NM
LNVA / VNAV	1900 (620)				Altitude (Height)	3600 (2320)	3540 (2260)	3225 (1945)	2910 (1630)	2595 (1315)	2280 (1000)	1960 (680)	1900 (620)
LNVA					Ground Speed	knot	70	90	100	120	140	160	
Circling (OCH AAL)	1900 (620)		3070 (1790)		Rate of Descent FAF-MAPt	5.2%	ft/min	369	474	527	632	737	843

NOTE :

- OCA/H 1600 (320) FT of LNAV/VNAV procedure** can be achieved for all aircraft categories which can commence a missed approach climb gradient of **3.5% (213 FT/NM)** until after turn.
- OCA/H 1680 (400) FT of LNAV procedure** can be achieved for all aircraft categories which can commence a missed approach climb gradient of **3.5% (213 FT/NM)** until after turn.

CHANGE: PDR.