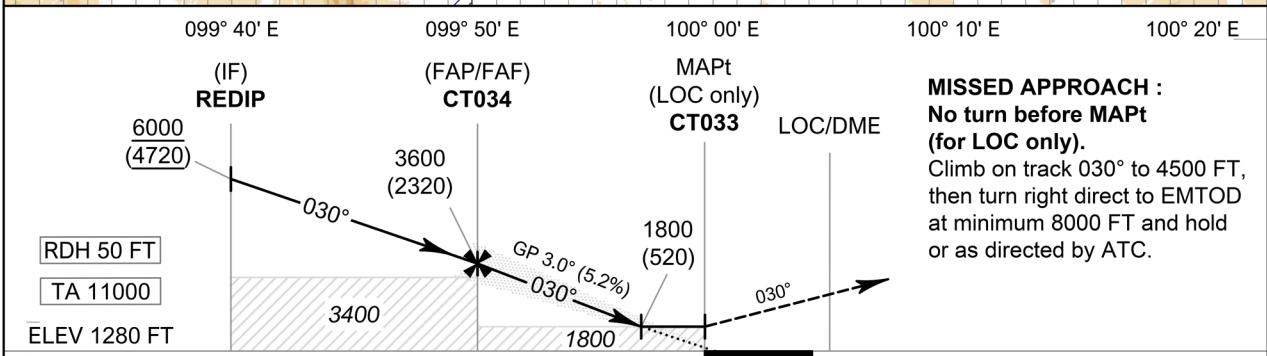
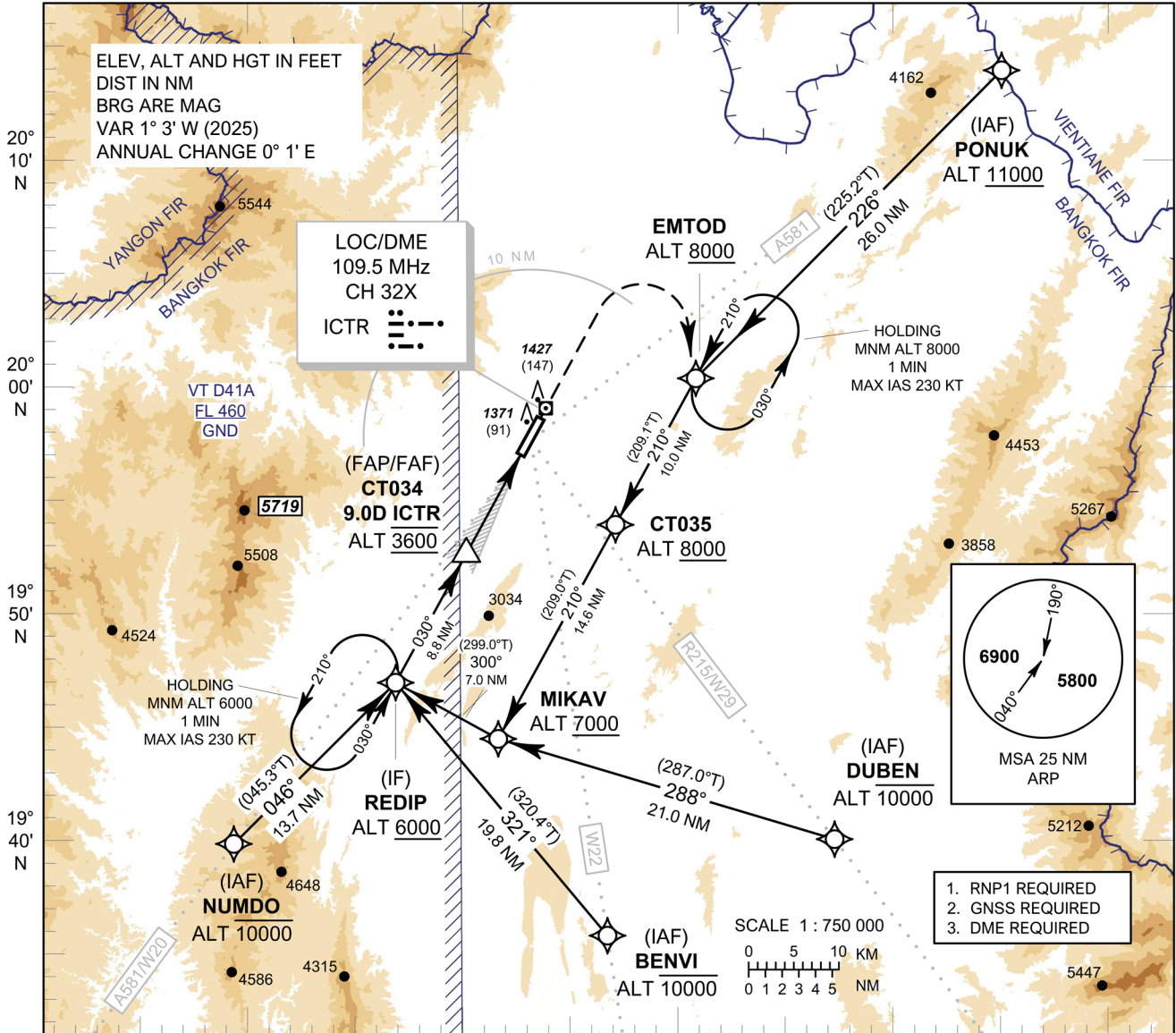


**INSTRUMENT APPROACH CHART - ICAO**  
**AERODROME ELEV 1280 FT**  
**HEIGHTS RELATED TO THR RWY03 - ELEV 1280 FT**

APP : 120.05 , 257.8  
 TWR : 118.4 , 236.6  
 ATIS : 127.85

**CHIANG RAI / Mae Fah Luang-Chiang Rai Intl (VTCT)**  
**ILS or LOC z RWY03**



**MISSED APPROACH :**  
**No turn before MAPt (for LOC only).**  
 Climb on track 030° to 4500 FT, then turn right direct to EMTOD at minimum 8000 FT and hold or as directed by ATC.

17.8 9.0 3.3 1.8 0 DME FM LOC/DME  
 16.0 7.2 1.5 0 NM FM THR

OCA/H		A	B	C	D	GS OUT	Distance (ICTR)	FAF	8 D	7 D	6 D	5 D	4 D	3.3 D
Straight-in Approach	CAT I	1800 (520)						Altitude (Height)	3600 (2320)	3290 (2010)	2975 (1695)	2655 (1375)	2340 (1060)	2025 (745)
						Ground Speed		knot	70	90	100	120	140	160
LOC only							Rate of Descent 5.2%	ft/min	369	474	527	632	737	843
Circling (OCH AAL)		1900 (620)		3070 (1790)										

**NOTE :**  
 1. **OCA/H 1480 (200) FT of ILS procedure** can be achieved for all aircraft categories which can commence a missed approach climb gradient of **3.5% (213 FT/NM)** until after turn.  
 2. **OCA/H 1680 (400) FT of LOC only procedure** can be achieved for all aircraft categories which can commence a missed approach climb gradient of **3.5% (213 FT/NM)** until after turn.

CHANGE: PDR.