

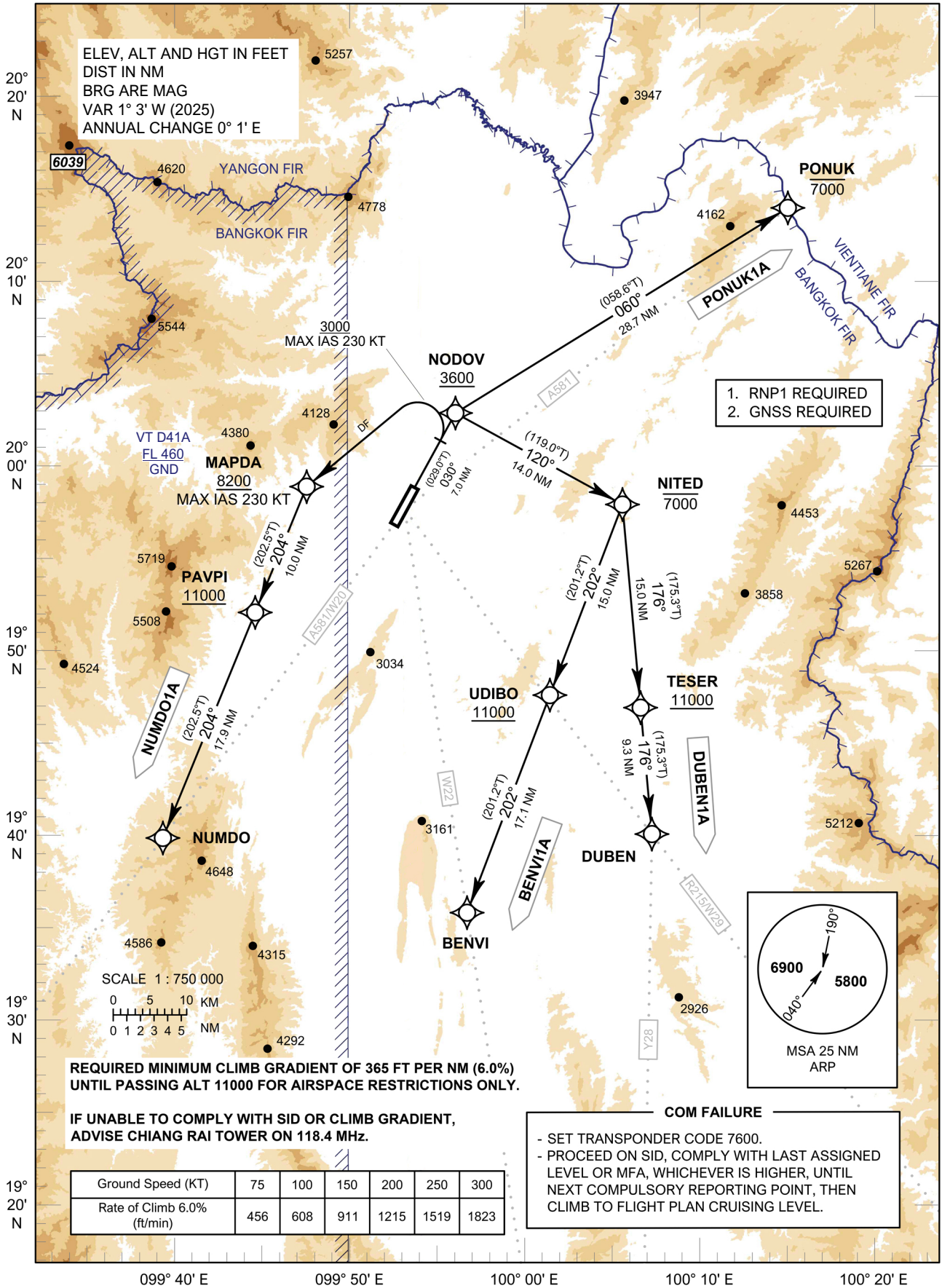
**STANDARD DEPARTURE CHART -  
INSTRUMENT (SID) - ICAO**

TRANSITION ALTITUDE  
11000 FT

APP : 120.05 , 257.8  
TWR : 118.4 , 236.6  
ATIS : 127.85

**CHIANG RAI /  
Mae Fah Luang-Chiang Rai Intl (VTCT)  
RNAV RWY03**

BENVI1A DUBEN1A NUMDO1A PONUK1A



1. RNP1 REQUIRED  
2. GNSS REQUIRED

REQUIRED MINIMUM CLIMB GRADIENT OF 365 FT PER NM (6.0%)  
UNTIL PASSING ALT 11000 FOR AIRSPACE RESTRICTIONS ONLY.

IF UNABLE TO COMPLY WITH SID OR CLIMB GRADIENT,  
ADVISE CHIANG RAI TOWER ON 118.4 MHz.

Ground Speed (KT)	75	100	150	200	250	300
Rate of Climb 6.0% (ft/min)	456	608	911	1215	1519	1823

**COM FAILURE**

- SET TRANSPONDER CODE 7600.
- PROCEED ON SID, COMPLY WITH LAST ASSIGNED LEVEL OR MFA, WHICHEVER IS HIGHER, UNTIL NEXT COMPULSORY REPORTING POINT, THEN CLIMB TO FLIGHT PLAN CRUISING LEVEL.

CHANGE: PDR.