

**STANDARD ARRIVAL CHART -
INSTRUMENT (STAR) - ICAO**

TRANSITION ALTITUDE
11000 FT

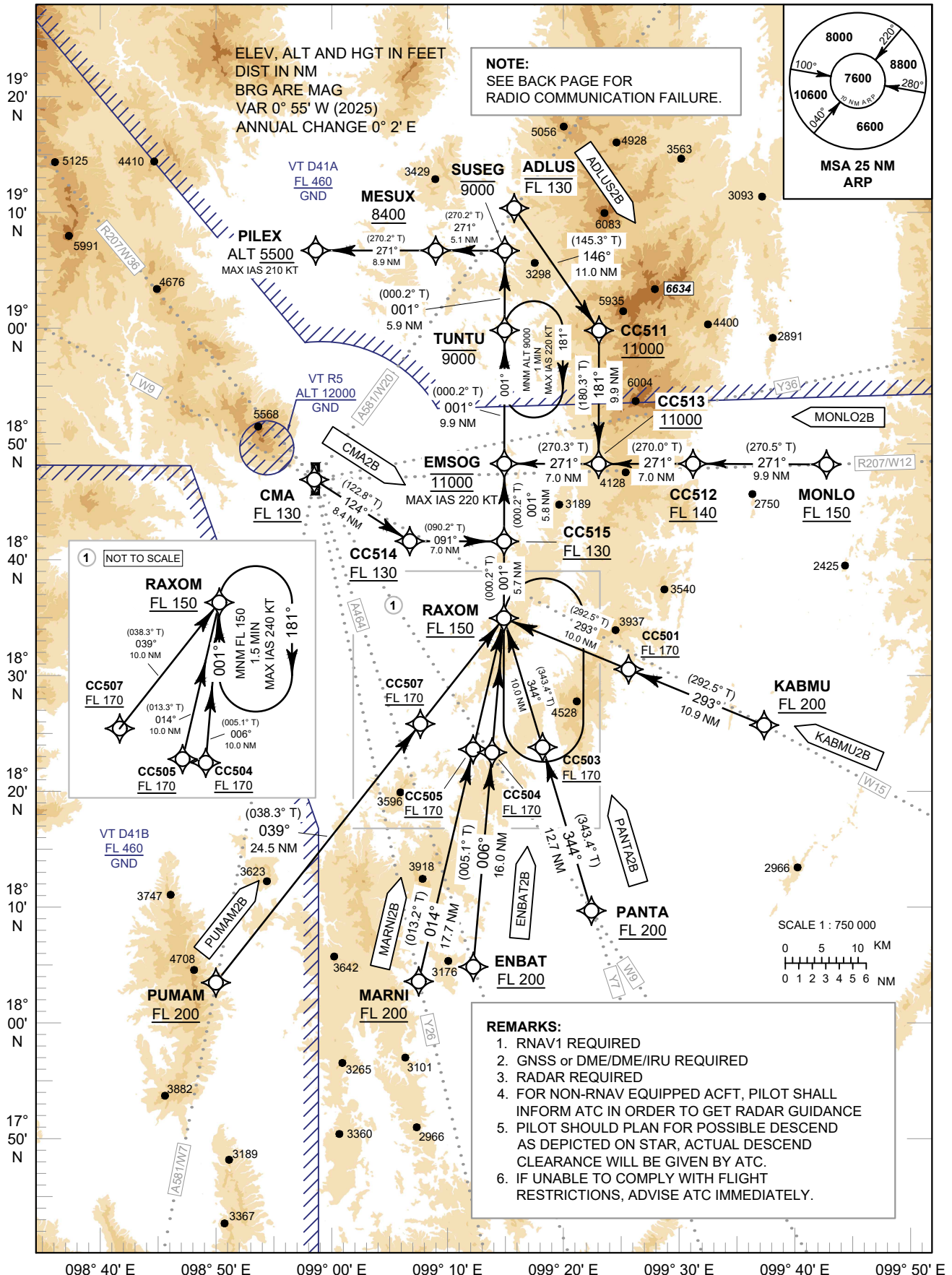
APP : 129.6 , 305.4
TWR : 118.1 , 236.6
GND : 121.9 , 275.8
ATIS : 127.425 , 301.5

CHIANG MAI / Chiang Mai Intl (VTCC)

RNAV RWY18

ADLUS2B CMA2B ENBAT2B KABMU2B
MARNI2B MONLO2B PANTA2B PUMAM2B

RNAV RWY18



CHANGE: PDR.