

STANDARD DEPARTURE CHART - INSTRUMENT (SID) - ICAO

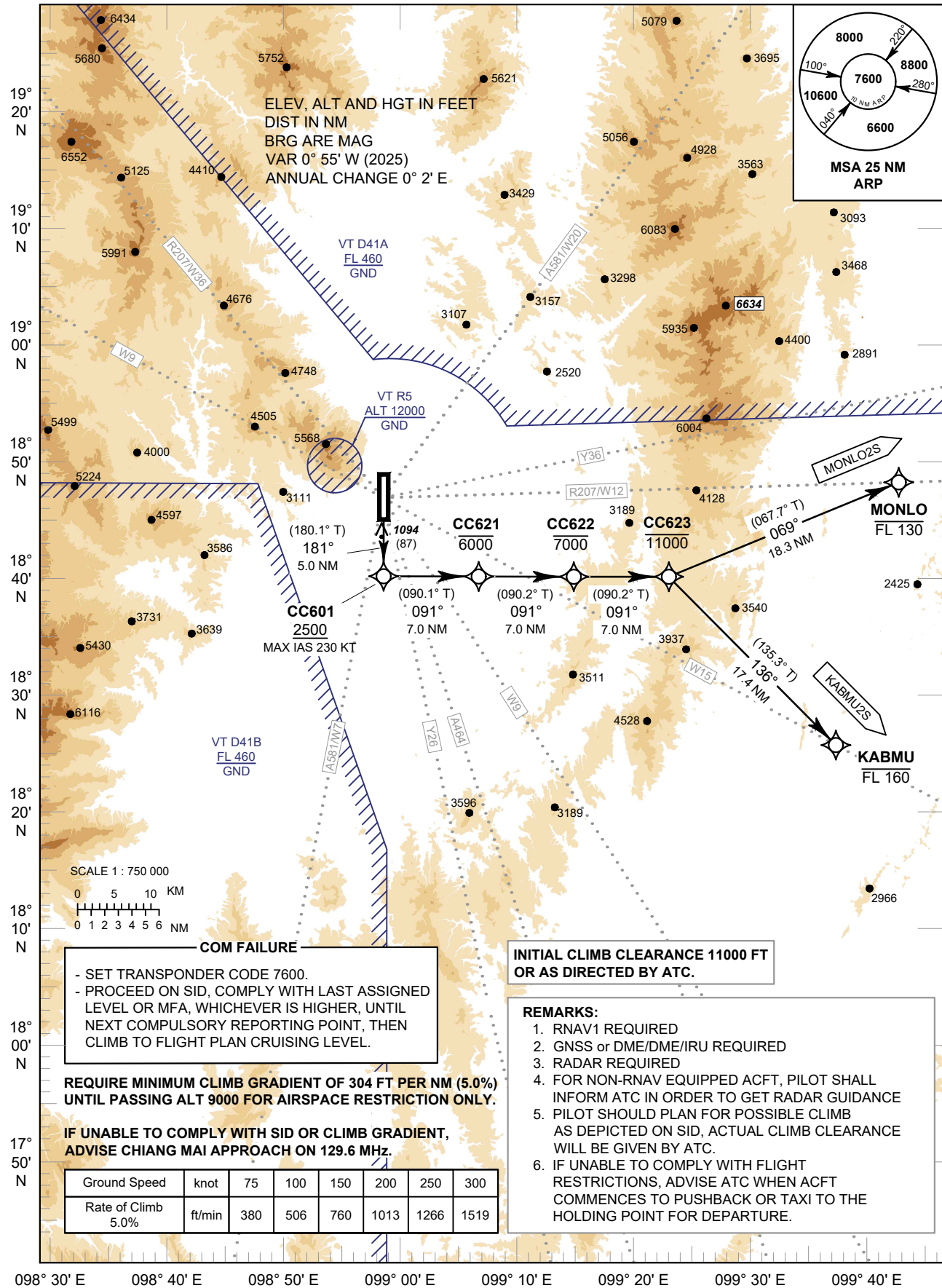
TRANSITION ALTITUDE
11000 FT

CHIANG MAI / Chiang Mai Intl (VTCC)

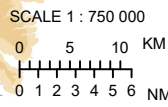
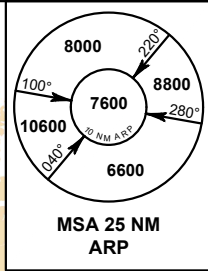
APP : 129.6 , 305.4
TWR : 118.1 , 236.6
GND : 121.9 , 275.8
ATIS : 127.425 , 301.5

RNAV RWY18

KABMU2S MONLO2S



ELEV, ALT AND HGT IN FEET
DIST IN NM
BRG ARE MAG
VAR 0° 55' W (2025)
ANNUAL CHANGE 0° 2' E



COM FAILURE

- SET TRANSPONDER CODE 7600.
- PROCEED ON SID, COMPLY WITH LAST ASSIGNED LEVEL OR MFA, WHICHEVER IS HIGHER, UNTIL NEXT COMPULSORY REPORTING POINT, THEN CLIMB TO FLIGHT PLAN CRUISING LEVEL.

REQUIRE MINIMUM CLIMB GRADIENT OF 304 FT PER NM (5.0%) UNTIL PASSING ALT 9000 FOR AIRSPACE RESTRICTION ONLY.

IF UNABLE TO COMPLY WITH SID OR CLIMB GRADIENT, ADVISE CHIANG MAI APPROACH ON 129.6 MHz.

Ground Speed	knot	75	100	150	200	250	300
Rate of Climb 5.0%	ft/min	380	506	760	1013	1266	1519

INITIAL CLIMB CLEARANCE 11000 FT OR AS DIRECTED BY ATC.

REMARKS:

1. RNAV1 REQUIRED
2. GNSS or DME/DME/IRU REQUIRED
3. RADAR REQUIRED
4. FOR NON-RNAV EQUIPPED ACFT, PILOT SHALL INFORM ATC IN ORDER TO GET RADAR GUIDANCE
5. PILOT SHOULD PLAN FOR POSSIBLE CLIMB AS DEPICTED ON SID, ACTUAL CLIMB CLEARANCE WILL BE GIVEN BY ATC.
6. IF UNABLE TO COMPLY WITH FLIGHT RESTRICTIONS, ADVISE ATC WHEN ACFT COMMENCES TO PUSHBACK OR TAXI TO THE HOLDING POINT FOR DEPARTURE.

CHANGE: PDR.