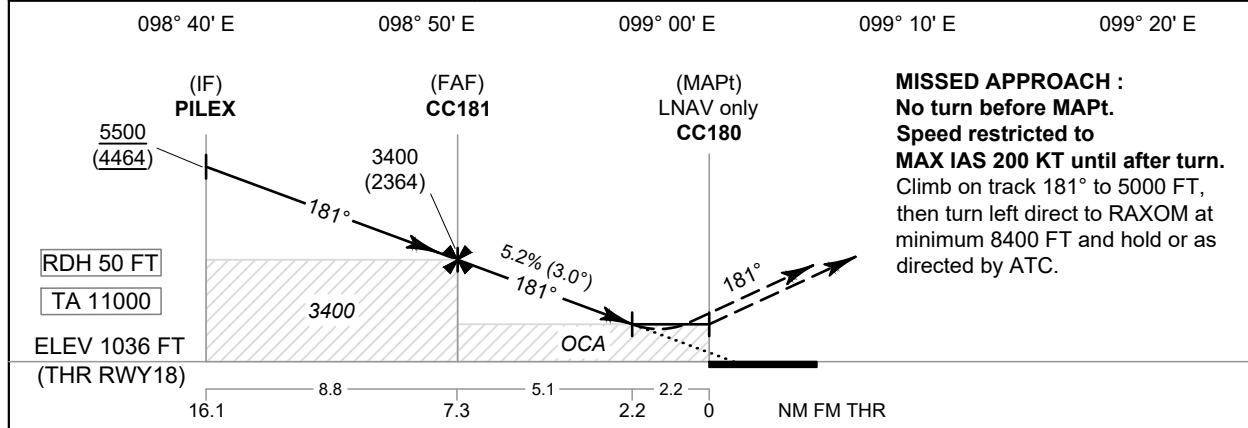
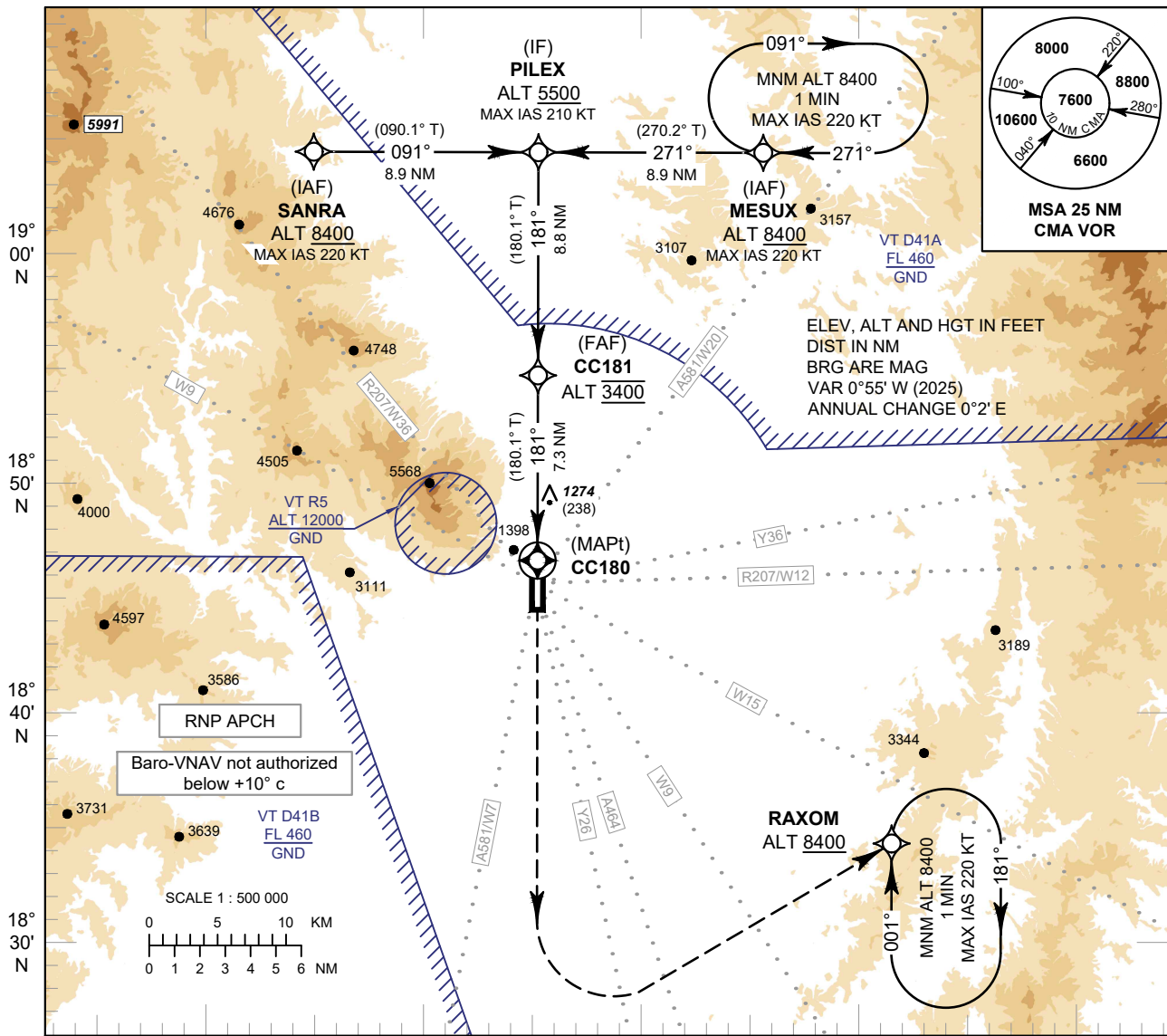


INSTRUMENT APPROACH CHART - ICAO **AERODROME ELEV 1036 FT**
 HEIGHTS RELATED TO THR RWY18 - ELEV 1036 FT

APP : 129.6 , 305.4
 TWR : 118.1 , 236.6
 GND : 121.9 , 275.8
 ATIS : 127.425 , 301.5

CHIANG MAI / Chiang Mai (VTCC)

RNP RWY18



MISSED APPROACH :
 No turn before MAPt.
 Speed restricted to **MAX IAS 200 KT** until after turn.
 Climb on track 181° to 5000 FT,
 then turn left direct to RAXOM at
 minimum 8400 FT and hold or as
 directed by ATC.

| OCA/H | A | B | C | D | NM to NEXT WPT | FAF | 7 NM | 6 NM | 5 NM | 4 NM | 3 NM | 2.2 NM | |
|--------------------|------------|-------------|-------------|---|-------------------|-------------|-------------|-------------|-------------|-------------|------------|------------|-----|
| LNAV / VNAV | 1560 (524) | | | | Altitude (Height) | 3400 (2364) | 3300 (2264) | 2980 (1944) | 2665 (1629) | 2350 (1314) | 2035 (999) | 1780 (744) | |
| LNAV | 1780 (744) | | | | Ground Speed | knot | 70 | 90 | 100 | 120 | 140 | 160 | |
| Circling (OCH AAL) | 2030 (994) | 2220 (1184) | 2420 (1384) | | Rate of Descent | 5.2% | ft/min | 369 | 474 | 527 | 632 | 737 | 843 |

* FOR CIRCLING RESTRICTION SEE VERSO

CHANGE: PDR.