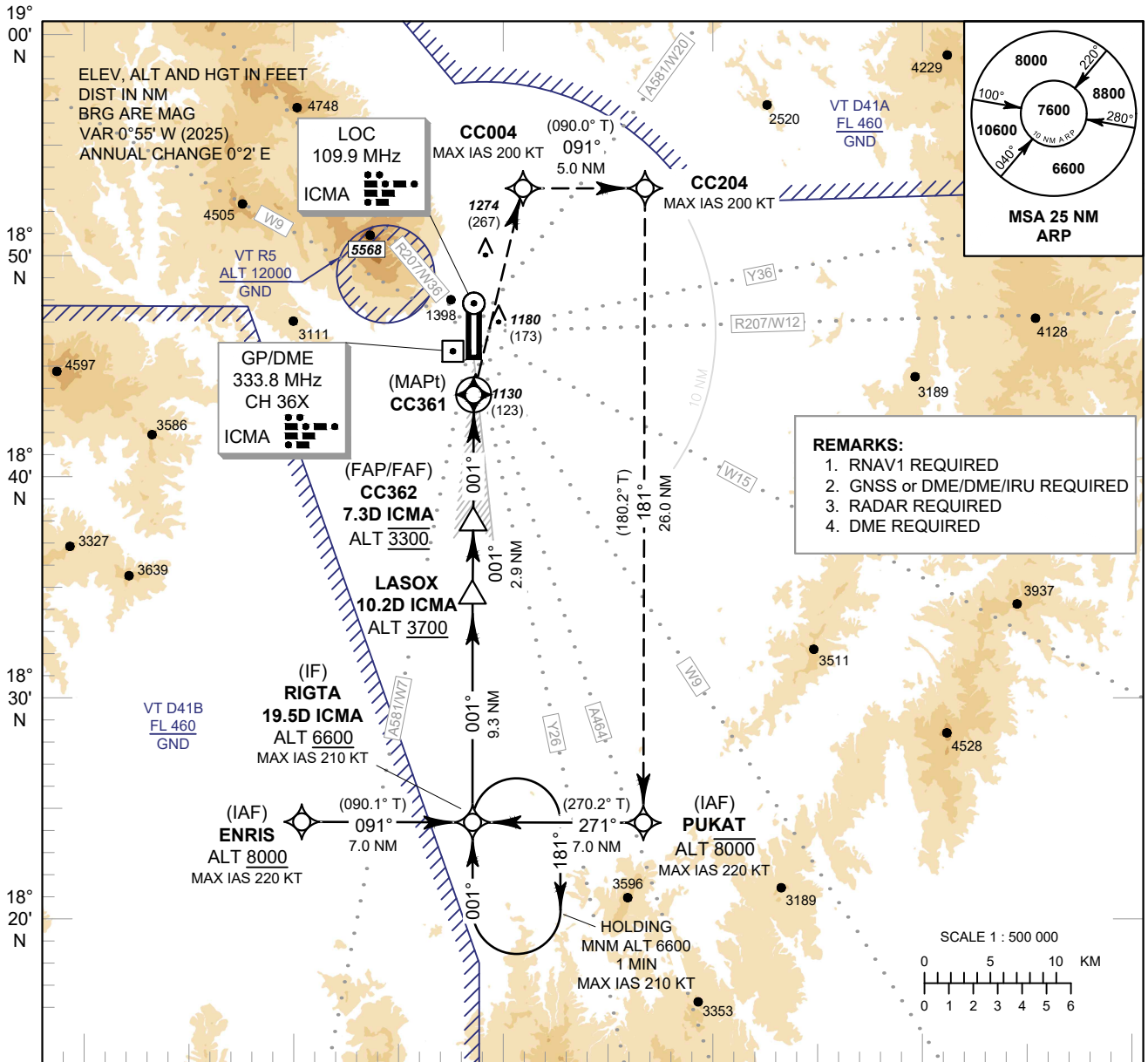


INSTRUMENT APPROACH CHART - ICAO
AERODROME ELEV 1036 FT
HEIGHTS RELATED TO THR RWY36 - ELEV 1007 FT

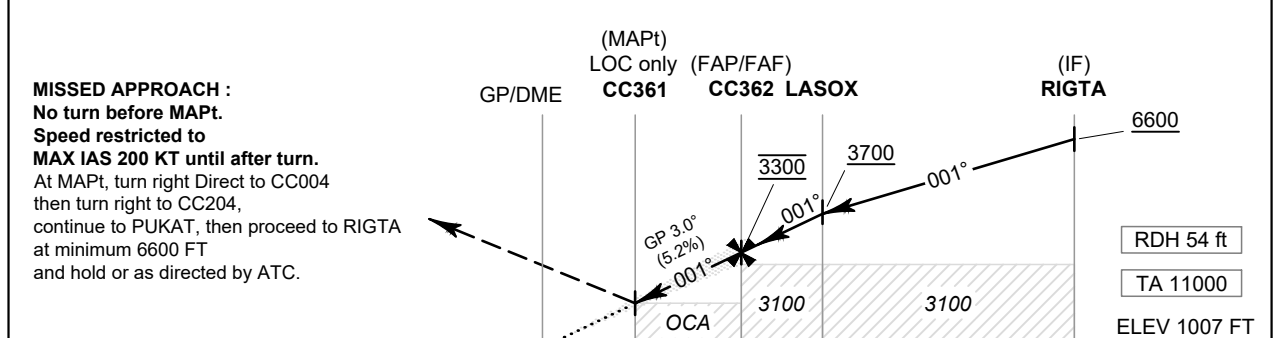
APP : 129.6 , 305.4
 TWR : 118.1 , 236.6
 GND : 121.9 , 275.8
 ATIS : 127.425 , 301.5

CHIANG MAI / Chiang Mai Intl (VTCC)

ILS or LOC z RWY36



098° 40' E 098° 50' E 099° 00' E 099° 10' E 099° 20' E 099° 30' E



MISSED APPROACH :
 No turn before MAPt.
 Speed restricted to **MAX IAS 200 KT until after turn.**
 At MAPt, turn right Direct to CC004 then turn right to CC204, continue to PUKAT, then proceed to RIGTA at minimum 6600 FT and hold or as directed by ATC.

DME FM GP/DME 0 0.2 2.0 7.3 10.2 19.5
 NM FM THR 0 1.8 7.1 10.0 19.3

OCA/H		A	B	C	D	Distance (ICMA)	2 D	3 D	4 D	5 D	6 D	7 D	FAF	
Straight-in Approach	CAT I	1420 (413)				Altitude (Height)	1630 (623)	1940 (933)	2260 (1253)	2575 (1568)	2890 (1883)	3205 (2198)	3300 (2293)	
	LOC only	1630 (623)				Ground Speed	knot	70	90	100	120	140	160	
Circling* (OCH AAL)		2030 (994)	2220 (1184)		2420 (1384)	Rate of Descent	5.2%	ft/min	369	474	527	632	737	843

* FOR CIRCLING RESTRICTION SEE VERSO

CHANGE: PDR.