

STANDARD DEPARTURE CHART - INSTRUMENT (SID) - ICAO

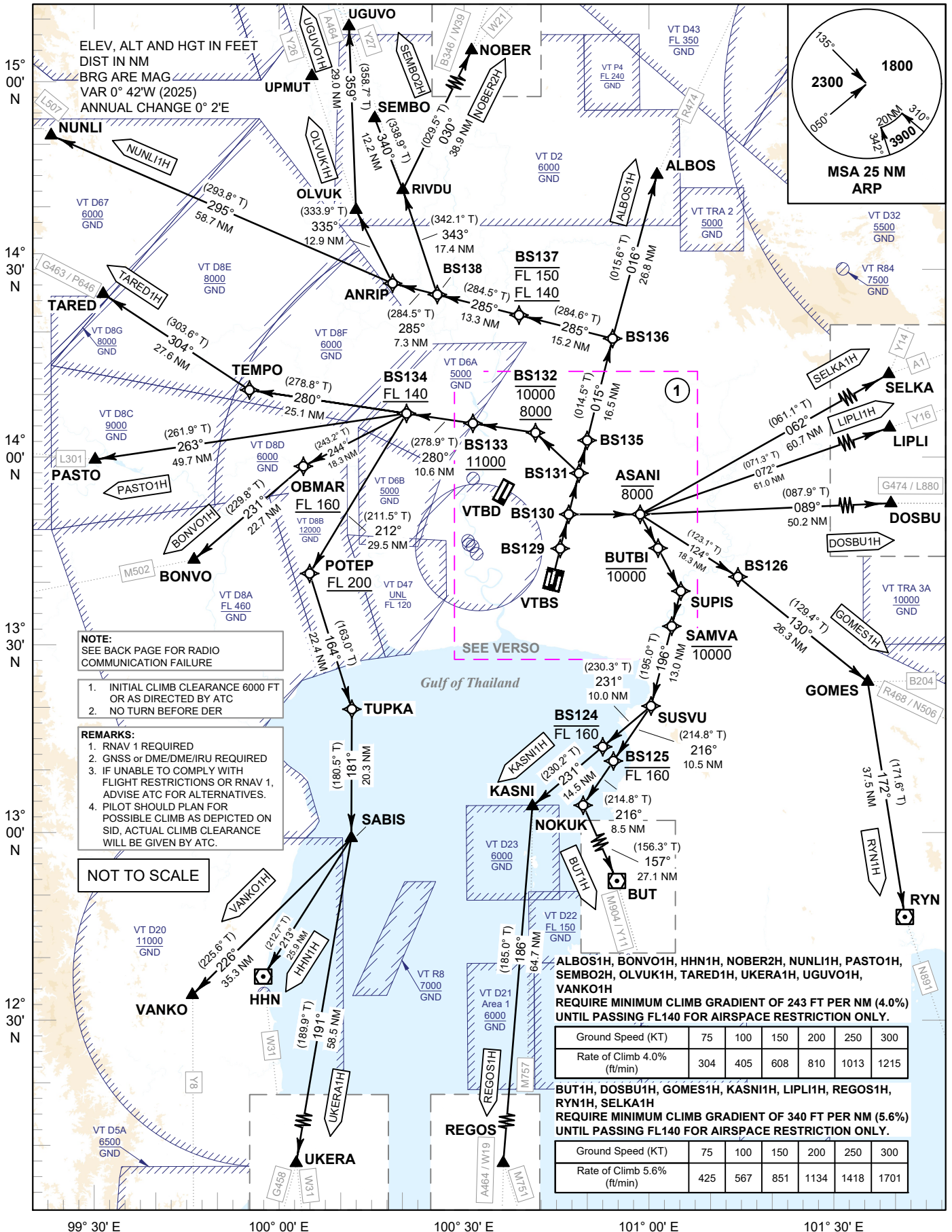
TRANSITION ALTITUDE
11000 FT

SPEED RESTRICTION
MAX IAS 250 KT AT OR BELOW ALT 10000 FT UNLESS OTHERWISE AUTHORIZED BY ATC.

APP : 119.1, 274.5
: 120.3, 274.5
: 133.4, 274.5
: 122.35, 274.5
: 124.35, 274.5
: 125.2, 274.5
ARR : 121.1, 274.5
: 126.3, 274.5
TWR : 118.2, 262.5
DEP ATIS : 127.65

**BANGKOK/Suvarnabhumi Intl (VTBS)
RNAV RWY02R**

ALBOS1H BONVO1H BUT1H DOSBU1H
GOMES1H HHN1H KASNI1H LIPL1H
NOBER2H NUNLI1H OLVUK1H PASTO1H
REGOS1H RYN1H SELKA1H SEMBO2H
TARED1H UKERA1H UGUVO1H VANKO1H



NOTE:
SEE BACK PAGE FOR RADIO COMMUNICATION FAILURE

- INITIAL CLIMB CLEARANCE 6000 FT OR AS DIRECTED BY ATC
- NO TURN BEFORE DER

REMARKS:
1. RNAV 1 REQUIRED
2. GNSS or DME/DME/IRU REQUIRED
3. IF UNABLE TO COMPLY WITH FLIGHT RESTRICTIONS OR RNAV 1, ADVISE ATC FOR ALTERNATIVES.
4. PILOT SHOULD PLAN FOR POSSIBLE CLIMB AS DEPICTED ON SID, ACTUAL CLIMB CLEARANCE WILL BE GIVEN BY ATC.

NOT TO SCALE

ALBOS1H, BONVO1H, HHN1H, NOBER2H, NUNLI1H, PASTO1H, SEMBO2H, OLVUK1H, TARED1H, UKERA1H, UGUVO1H, VANKO1H
REQUIRE MINIMUM CLIMB GRADIENT OF 243 FT PER NM (4.0%) UNTIL PASSING FL140 FOR AIRSPACE RESTRICTION ONLY.

Ground Speed (KT)	75	100	150	200	250	300
Rate of Climb 4.0% (ft/min)	304	405	608	810	1013	1215

BUT1H, DOSBU1H, GOMES1H, KASNI1H, LIPL1H, REGOS1H, RYN1H, SELKA1H
REQUIRE MINIMUM CLIMB GRADIENT OF 340 FT PER NM (5.6%) UNTIL PASSING FL140 FOR AIRSPACE RESTRICTION ONLY.

Ground Speed (KT)	75	100	150	200	250	300
Rate of Climb 5.6% (ft/min)	425	567	851	1134	1418	1701

CHANGE: PDR.