

**STANDARD DEPARTURE CHART - INSTRUMENT (SID) - ICAO**

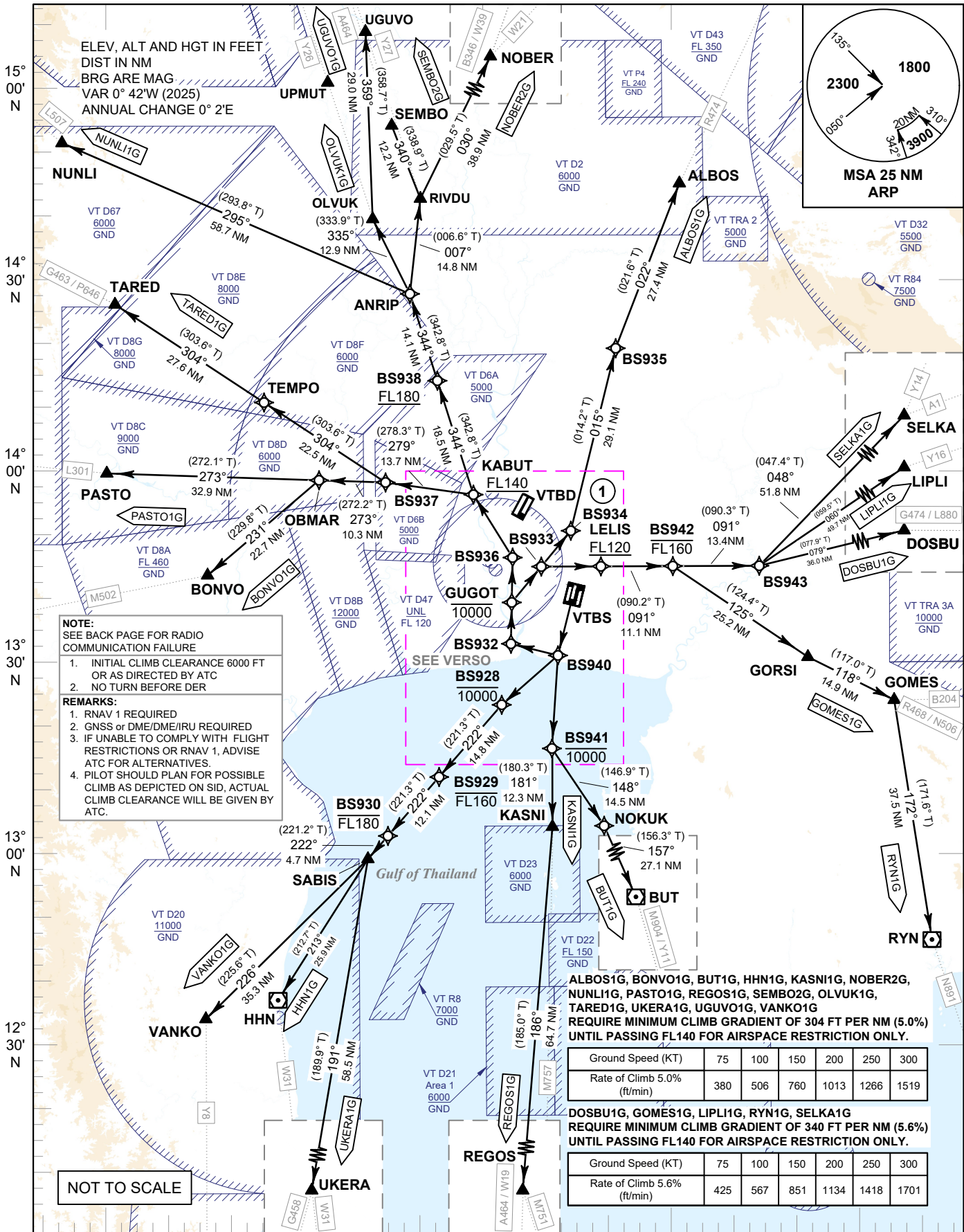
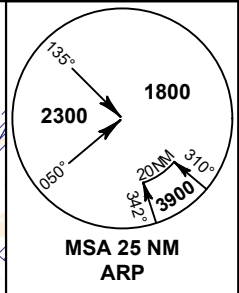
TRANSITION ALTITUDE  
11000 FT

**SPEED RESTRICTION**  
MAX IAS 250 KT AT OR BELOW ALT 10000 FT UNLESS OTHERWISE AUTHORIZED BY ATC.

APP : 119.1, 274.5  
: 120.3, 274.5  
: 133.4, 274.5  
: 122.35, 274.5  
: 124.35, 274.5  
: 125.2, 274.5  
ARR : 121.1, 274.5  
: 126.3, 274.5  
TWR : 118.2, 262.5  
: 119.0  
DEP ATIS : 127.65

**BANGKOK/Suvarnabhumi Intl (VTBS)  
RNAV RWY20L**

ALBOS1G BONVO1G BUT1G DOSBU1G  
GOMES1G HHN1G KASNI1G LIPLI1G  
NOBER2G NUNLI1G OLVUK1G PASTO1G  
REGOS1G RYN1G SELKA1G SEMBO2G  
TARED1G UKERA1G UGUVO1G VANKO1G



**NOTE:**  
SEE BACK PAGE FOR RADIO COMMUNICATION FAILURE

- INITIAL CLIMB CLEARANCE 6000 FT OR AS DIRECTED BY ATC
- NO TURN BEFORE DER

**REMARKS:**

- RNAV 1 REQUIRED
- GNS or DME/DME/IRU REQUIRED
- IF UNABLE TO COMPLY WITH FLIGHT RESTRICTIONS OR RNAV 1, ADVISE ATC FOR ALTERNATIVES.
- PILOT SHOULD PLAN FOR POSSIBLE CLIMB AS DEPICTED ON SID, ACTUAL CLIMB CLEARANCE WILL BE GIVEN BY ATC.

Ground Speed (KT)	75	100	150	200	250	300
Rate of Climb 5.0% (ft/min)	380	506	760	1013	1266	1519

DOSBU1G, GOMES1G, LIPLI1G, RYN1G, SELKA1G  
REQUIRE MINIMUM CLIMB GRADIENT OF 340 FT PER NM (5.6%) UNTIL PASSING FL140 FOR AIRSPACE RESTRICTION ONLY.

Ground Speed (KT)	75	100	150	200	250	300
Rate of Climb 5.6% (ft/min)	425	567	851	1134	1418	1701

CHANGE: PDR.

99° 30' E      100° 00' E      100° 30' E      101° 00' E      101° 30' E

NOT TO SCALE