

STANDARD DEPARTURE CHART - INSTRUMENT (SID) - ICAO

TRANSITION ALTITUDE
11000 FT

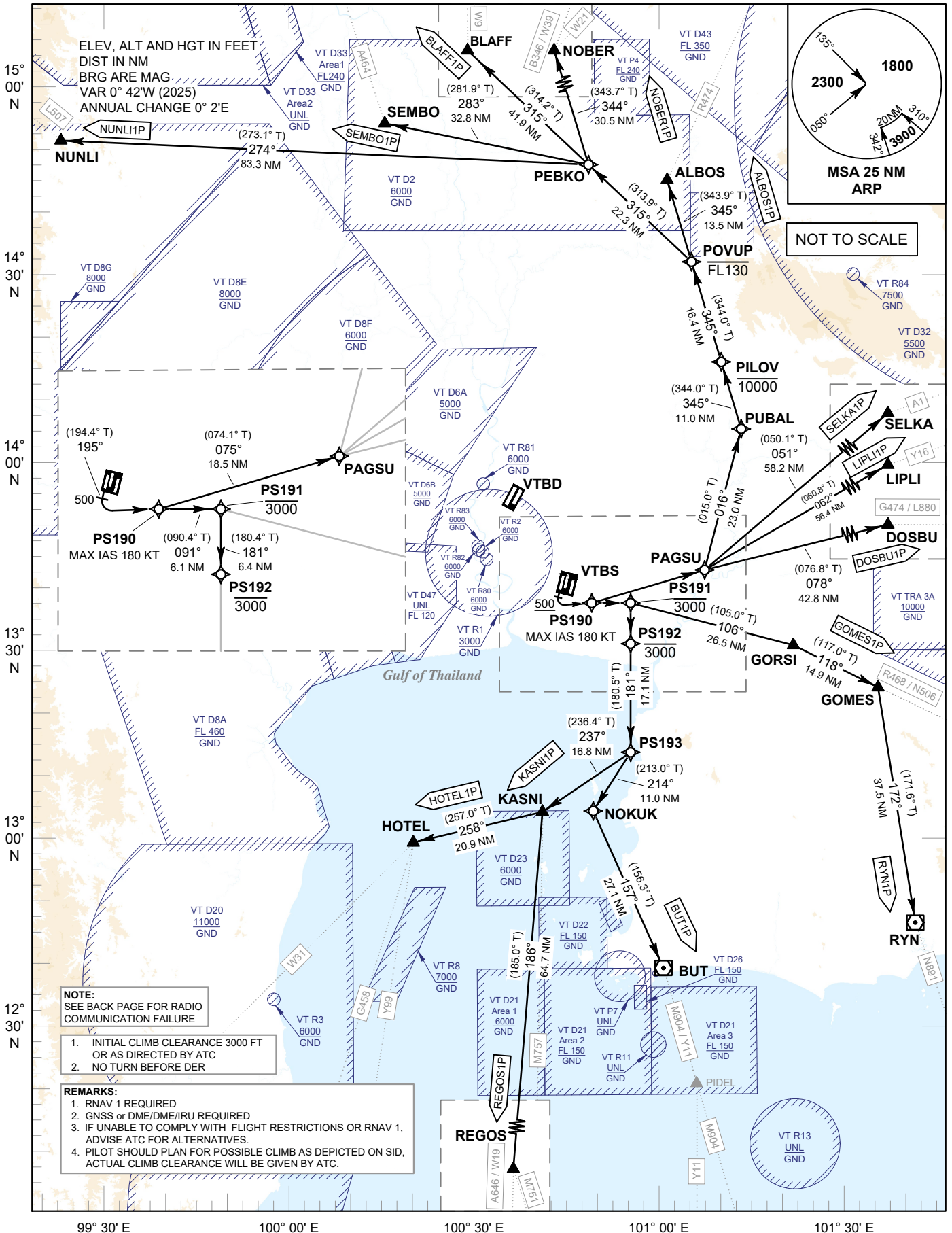
SPEED RESTRICTION
MAX IAS 250 KT AT OR BELOW ALT 10000 FT UNLESS OTHERWISE AUTHORIZED BY ATC.

APP	: 119.1, 274.5
	: 120.3, 274.5
	: 133.4, 274.5
	: 122.35, 274.5
	: 124.35, 274.5
	: 125.2, 274.5
ARR	: 121.1, 274.5
	: 126.3, 274.5
TWR	: 118.2, 262.5
	: 119.0
DEP ATIS	: 127.65

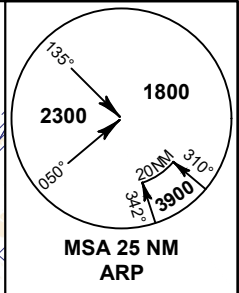
BANGKOK/Suvarnabhumi Intl (VTBS)

RNAV RWY20R (PROPELLER)

ALBOS1P BLAFF1P BUT1P DOSBU1P
GOMES1P HOTEL1P KASNI1P LIPLI1P
NOBER1P NUNLI1P REGOS1P RYN1P
SELKA1P SEMBO1P



ELEV, ALT AND HGT IN FEET
DIST IN NM
BRG ARE MAG
VAR 0° 42'W (2025)
ANNUAL CHANGE 0° 2'E



NOT TO SCALE

NOTE:
SEE BACK PAGE FOR RADIO COMMUNICATION FAILURE

1. INITIAL CLIMB CLEARANCE 3000 FT OR AS DIRECTED BY ATC
2. NO TURN BEFORE DER

REMARKS:

1. RNAV 1 REQUIRED
2. GNSS or DME/DME/IRU REQUIRED
3. IF UNABLE TO COMPLY WITH FLIGHT RESTRICTIONS OR RNAV 1, ADVISE ATC FOR ALTERNATIVES.
4. PILOT SHOULD PLAN FOR POSSIBLE CLIMB AS DEPICTED ON SID, ACTUAL CLIMB CLEARANCE WILL BE GIVEN BY ATC.

CHANGE: PDR.