

**STANDARD DEPARTURE CHART - INSTRUMENT (SID) - ICAO**

TRANSITION ALTITUDE  
11000 FT

**SPEED RESTRICTION**  
MAX IAS 250 KT AT OR BELOW ALT 10000 FT UNLESS OTHERWISE AUTHORIZED BY ATC.

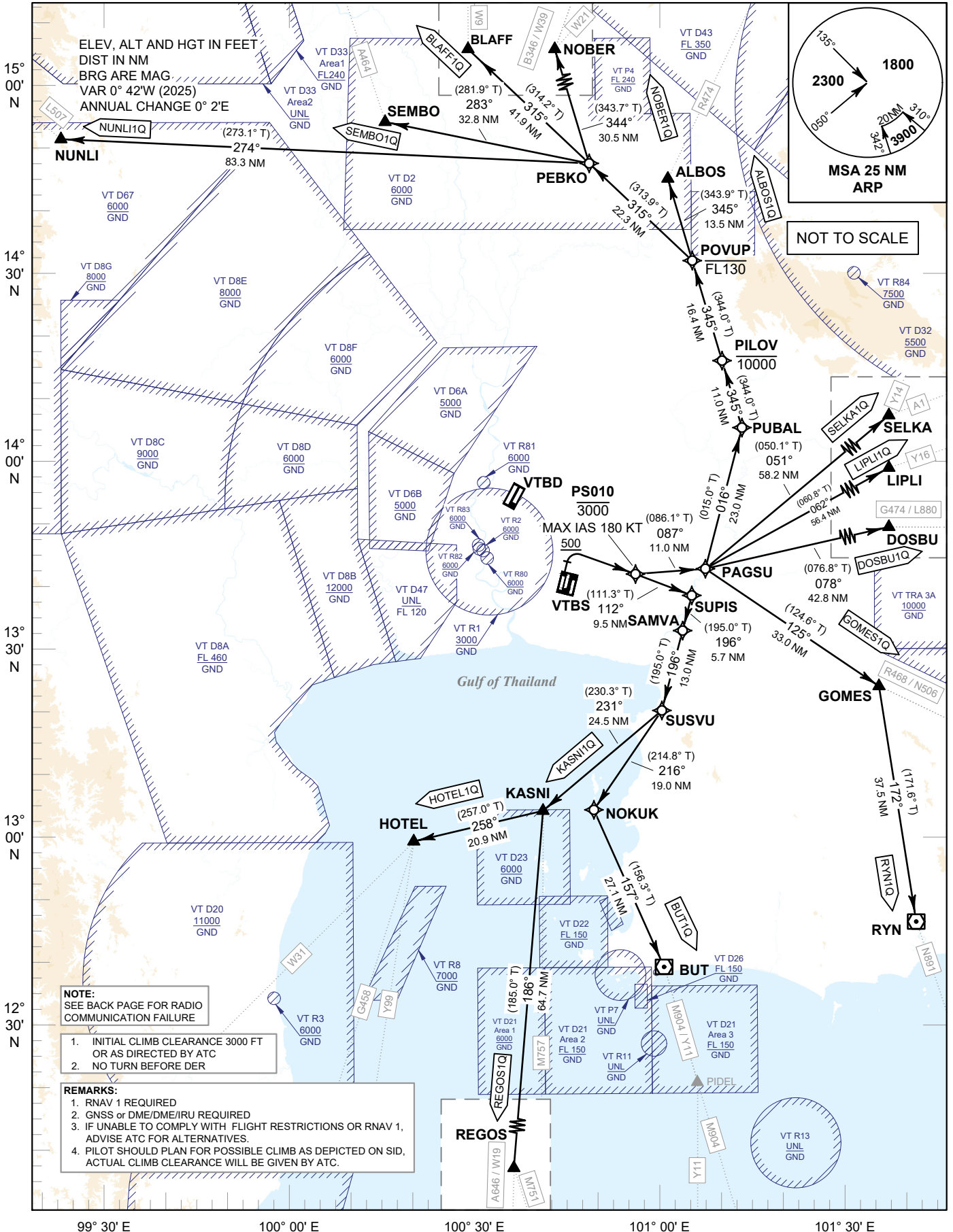
APP : 119.1, 274.5  
: 120.3, 274.5  
: 133.4, 274.5  
: 124.35, 274.5  
: 125.2, 274.5  
ARR : 121.1, 274.5  
: 126.3, 274.5  
TWR : 118.2, 262.5  
DEP ATIS : 127.65

**BANGKOK/Suvarnabhumi Intl (VTBS)**

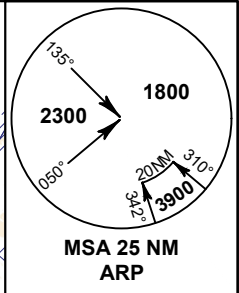
**RNAV RWY02L**

**(PROPELLER)**

ALBOS1Q BLAFF1Q BUT1Q DOSBU1Q  
GOMES1Q HOTEL1Q KASNI1Q LIPLI1Q  
NOBER1Q NUNLI1Q REGOS1Q RYN1Q  
SELKA1Q SEMBO1Q



ELEV, ALT AND HGT IN FEET  
DIST IN NM  
BRG ARE MAG  
VAR 0° 42'W (2025)  
ANNUAL CHANGE 0° 2'E



**NOTE:**  
SEE BACK PAGE FOR RADIO COMMUNICATION FAILURE

1. INITIAL CLIMB CLEARANCE 3000 FT OR AS DIRECTED BY ATC NO TURN BEFORE DER

- REMARKS:**
1. RNAV 1 REQUIRED
  2. GNSS or DME/DME/IRU REQUIRED
  3. IF UNABLE TO COMPLY WITH FLIGHT RESTRICTIONS OR RNAV 1, ADVISE ATC FOR ALTERNATIVES.
  4. PILOT SHOULD PLAN FOR POSSIBLE CLIMB AS DEPICTED ON SID, ACTUAL CLIMB CLEARANCE WILL BE GIVEN BY ATC.

CHANGE: PDR.