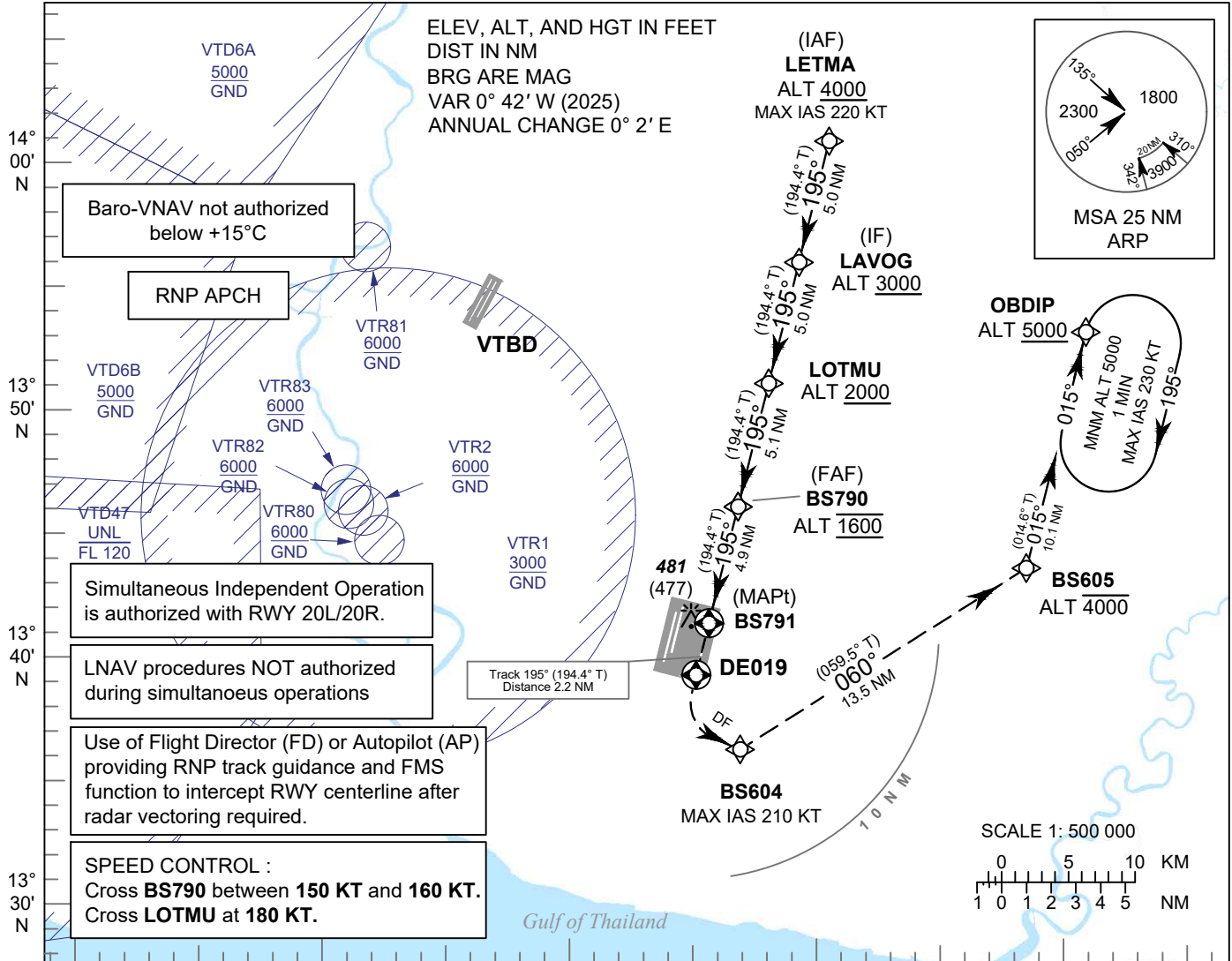


INSTRUMENT APPROACH CHART - ICAO **AERODROME ELEV 8 FT**
HEIGHTS RELATED TO THR RWY19 - ELEV 4 FT

| | |
|----------|-----------------|
| APP | : 119.1, 274.5 |
| | : 120.3, 274.5 |
| | : 133.4, 274.5 |
| | : 122.35, 274.5 |
| | : 124.35, 274.5 |
| | : 125.2, 274.5 |
| ARR | : 121.1, 274.5 |
| | : 126.3, 274.5 |
| TWR | : 118.2, 262.5 |
| | : 119.0 |
| ARR ATIS | : 133.6, 278.6 |

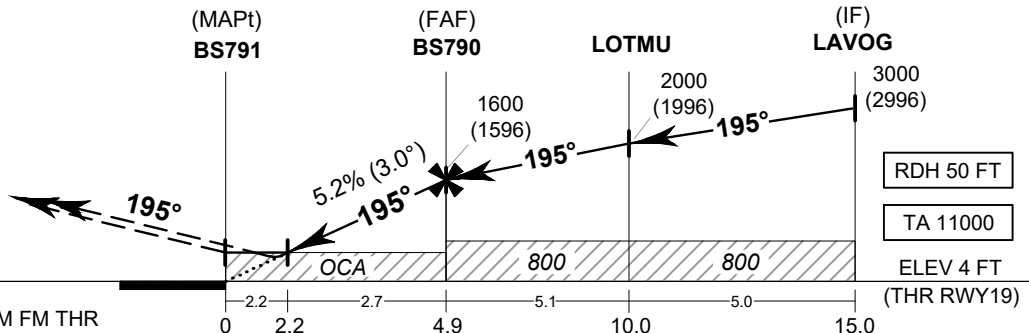
BANGKOK / Suvarnabhumi Intl (VTBS)

RNP RWY19



MISSED APPROACH:
No turn before MAPt.

At MAPt, climb to DE019, then turn left to BS604, turn left climb up to 4000 FT at BS605, then turn left and proceed to OBDIP at minimum 5000 FT and hold or as directed by ATC.



| | | | | | | | | | | | | |
|--------------------|-----------|---|-----------|---|-------------------------------|-----------|-------------|-------------|-------------|-----|-----|-----|
| OCA/H | A | B | C | D | NM to NEXT WPT | 2.2 NM | 3 NM | 4 NM | FAF | | | |
| LNAV / VNAV | 600 (596) | | | | Altitude (Height) | 750 (746) | 1005 (1001) | 1320 (1316) | 1600 (1596) | | | |
| LNAV | 750 (746) | | | | Ground speed | knot | 70 | 90 | 100 | 120 | 140 | 160 |
| Circling (OCH AAL) | 800 (792) | | 900 (892) | | Rate of descent FAF-MAPT 5.2% | ft/min | 369 | 474 | 527 | 632 | 737 | 843 |

CHANGE: PDR.