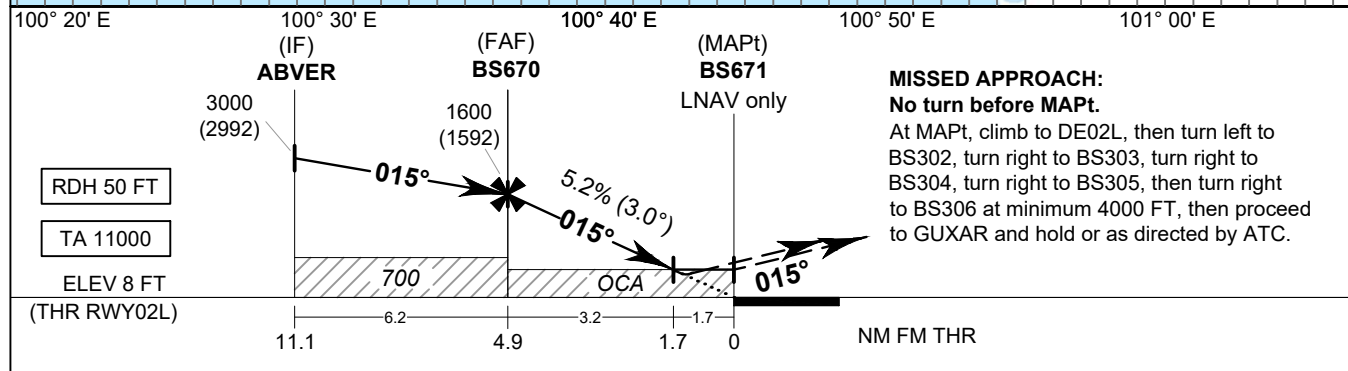
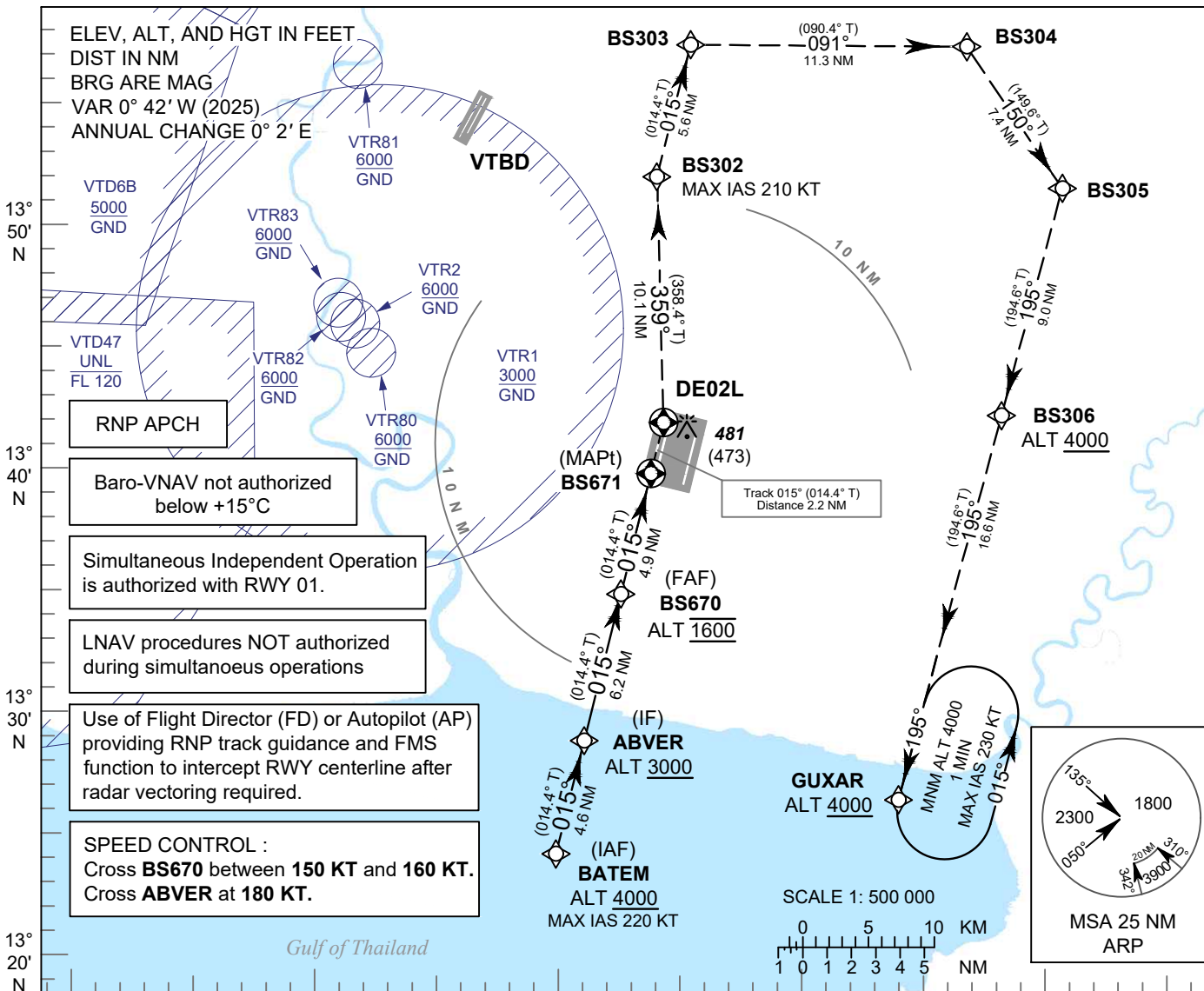


**INSTRUMENT
APPROACH
CHART - ICAO**

**AERODROME ELEV 8 FT
HEIGHTS RELATED TO
THR RWY02L - ELEV 8 FT**

APP	: 119.1, 274.5
	: 120.3, 274.5
	: 133.4, 274.5
	: 122.35, 274.5
	: 124.35, 274.5
	: 125.2, 274.5
ARR	: 121.1, 274.5
	: 126.3, 274.5
TWR	: 118.2, 262.5
	: 119.0
ARR ATIS	: 133.6, 278.6

BANGKOK / Suvarnabhumi Intl (VTBS)
RNP RWY02L



OCA/H	A	B	C	D	NM to NEXT WPT	FAF	4 NM	3 NM	2 NM	1.7 NM
LNAV / VNAV	540 (532)				Altitude (Height)	1600 (1592)	1320 (1312)	1005 (997)	690 (682)	600 (592)
LNAV	600 (592)				Ground speed	knot	70	90	100	120
Circling (OCH AAL)	800 (792)		900 (892)		Rate of descent FAF-MAPt 5.2%	ft/min	369	474	527	632

CHANGE: PDR.