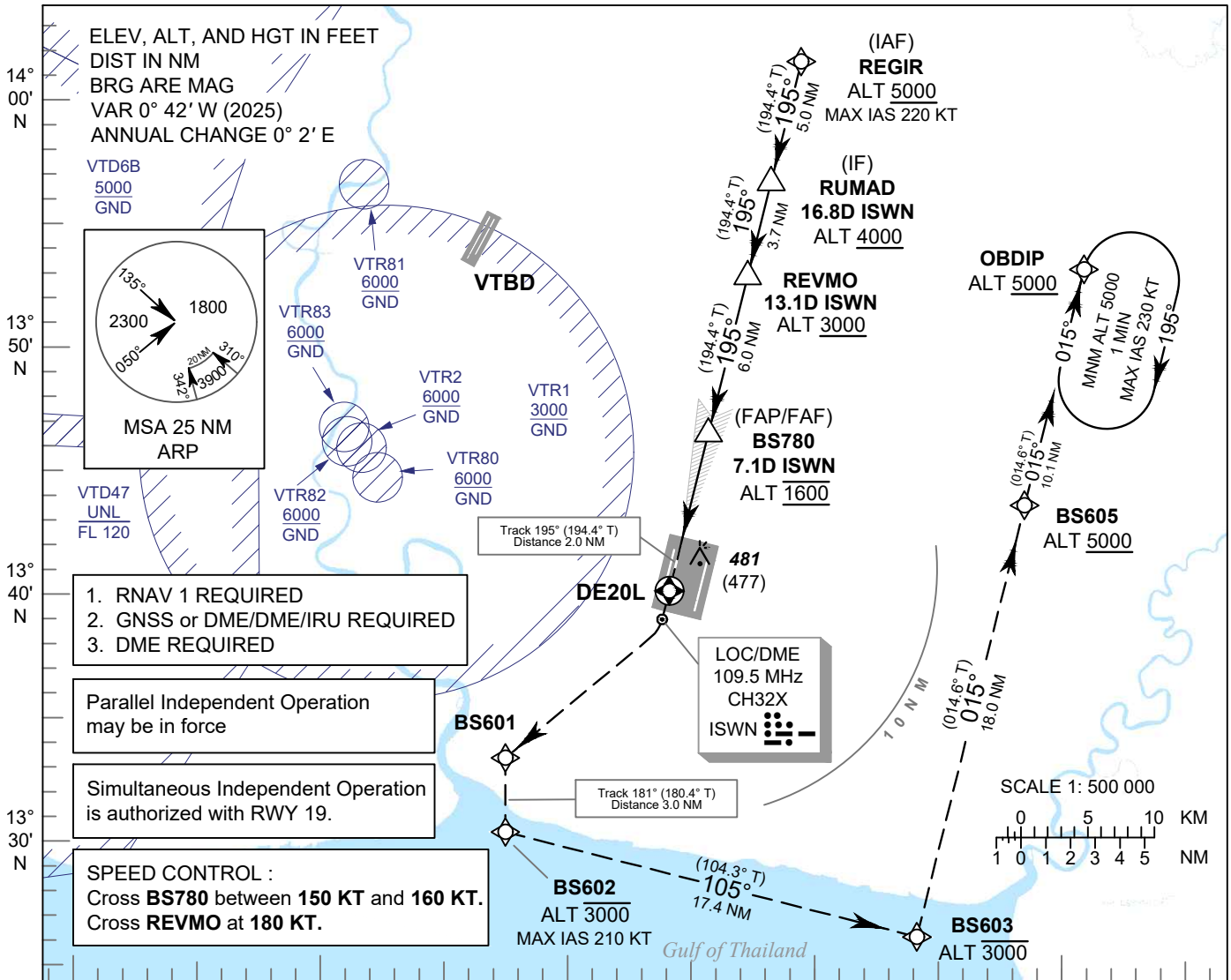


INSTRUMENT APPROACH CHART - ICAO **AERODROME ELEV 8 FT**
 HEIGHTS RELATED TO
 THR RWY20L - ELEV 4 FT

APP	: 119.1, 274.5
	: 120.3, 274.5
	: 133.4, 274.5
	: 122.35, 274.5
	: 124.35, 274.5
	: 125.2, 274.5
ARR	: 121.1, 274.5
	: 126.3, 274.5
TWR	: 118.2, 262.5
	: 119.0
ARR ATIS	: 133.6, 278.6

BANGKOK / Suvarnabhumi Intl (VTBS)

**ILS or LOC z RWY20L
 CAT II**



1. RNAV 1 REQUIRED
2. GNSS or DME/DME/IRU REQUIRED
3. DME REQUIRED

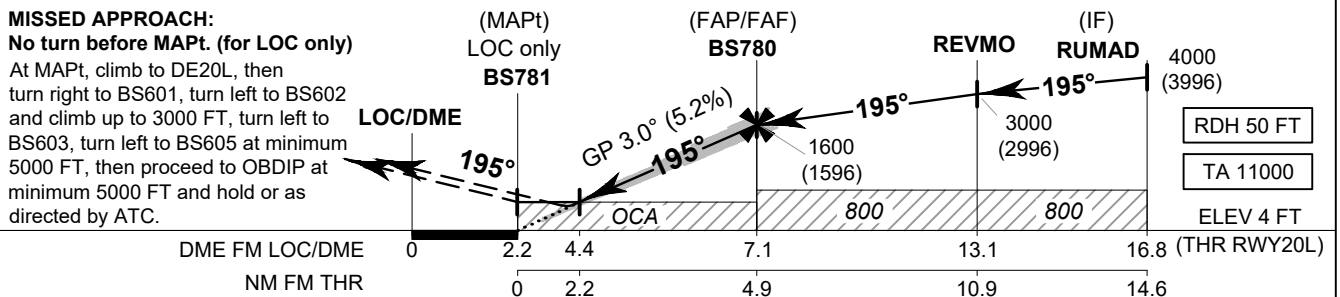
Parallel Independent Operation may be in force

Simultaneous Independent Operation is authorized with RWY 19.

SPEED CONTROL :
 Cross **BS780** between **150 KT** and **160 KT**.
 Cross **REVMO** at **180 KT**.

MISSED APPROACH:

No turn before MAPt. (for LOC only)
 At MAPt, climb to DE20L, then turn right to BS601, turn left to BS602 and climb up to 3000 FT, turn left to BS603, turn left to BS605 at minimum 5000 FT, then proceed to OBDIP at minimum 5000 FT and hold or as directed by ATC.



OCA/H	A	B	C	D	T	Distance (ISWN)					FAF		
						4.4 D	5 D	6 D	7 D	8 D			
Straight-in Approach	CAT I*	290 (286)				1000	4.4 D	5 D	6 D	7 D	8 D	1600	
	CAT II**	220 (216)					750 (746)	940 (936)	1255 (1251)	1570 (1566)	1600 (1596)		
LOC only	750 (746)				1000	Ground speed	knot	70	90	100	120	140	160
Circling (OCH AAL)	800 (792)	900 (892)				Rate of descent (5.2%)	ft/min	369	474	527	632	737	843

NOTE: *OCA (OCH) CAT I : 204 (200) FT of ILS procedures can be achieved for all aircraft categories which can commence a missed approach climb gradient of 5% (304 FT/NM) until passing ALT 1000 FT.
 **OCA (OCH) CAT II : 130 (126) FT of ILS procedures can be achieved for all aircraft categories which can commence a missed approach climb gradient of 5% (304 FT/NM) until passing ALT 1000 FT.

CHANGE: PDR.