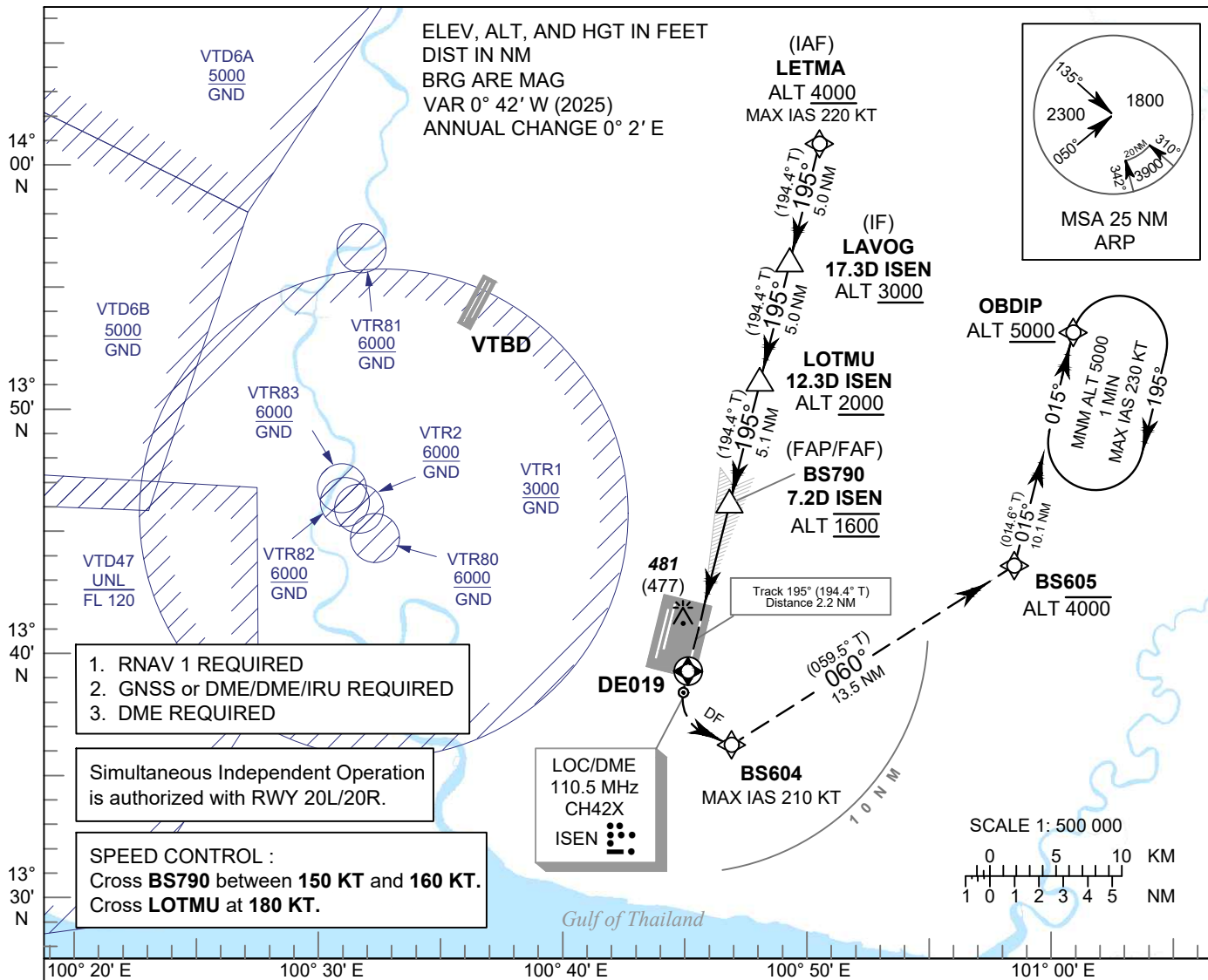


**INSTRUMENT APPROACH CHART - ICAO**      **AERODROME ELEV 8 FT**  
**HEIGHTS RELATED TO THR RWY19 - ELEV 4 FT**

APP	: 119.1, 274.5
	: 120.3, 274.5
	: 133.4, 274.5
	: 122.35, 274.5
	: 124.35, 274.5
	: 125.2, 274.5
ARR	: 121.1, 274.5
	: 126.3, 274.5
TWR	: 118.2, 262.5
	: 119.0
ARR ATIS	: 133.6, 278.6

**BANGKOK / Suvarnabhumi Intl (VTBS)**

**ILS or LOC z RWY19**  
**CAT II**



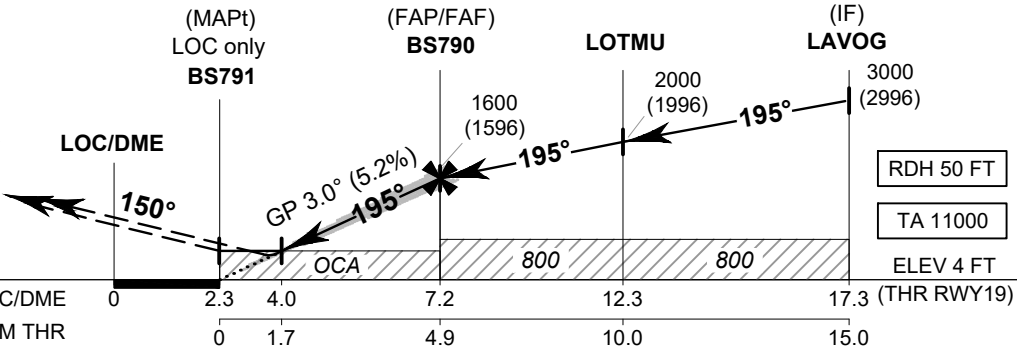
- 1. RNAV 1 REQUIRED
- 2. GNSS or DME/DME/IRU REQUIRED
- 3. DME REQUIRED

Simultaneous Independent Operation is authorized with RWY 20L/20R.

**SPEED CONTROL :**  
 Cross **BS790** between **150 KT** and **160 KT**.  
 Cross **LOTMU** at **180 KT**.

**MISSED APPROACH:**  
**No turn before MAPt.**  
**(for LOC only)**

At MAPt, climb to DE019, then turn left to BS604, turn left climb up to 4000 FT at BS605, then turn left and proceed to OBDIP at minimum 5000 FT and hold or as directed by ATC.



CHANGE: PDR.

OCA/H		A	B	C	D	G S O U T	Distance (ISEN)	4 D	5 D	6 D	7 D	FAF	
Straight-in Approach	CAT I	250 (246)					Distance (Height)	590 (586)	910 (906)	1225 (1221)	1540 (1536)	1600 (1596)	
	CAT II	140 (136)				Ground speed		knot	70	90	100	120	140
LOC only		590 (586)				Rate of descent (5.2%)	ft/min	369	474	527	632	737	843
Circling (OCH AAL)		800 (792)		900 (892)									