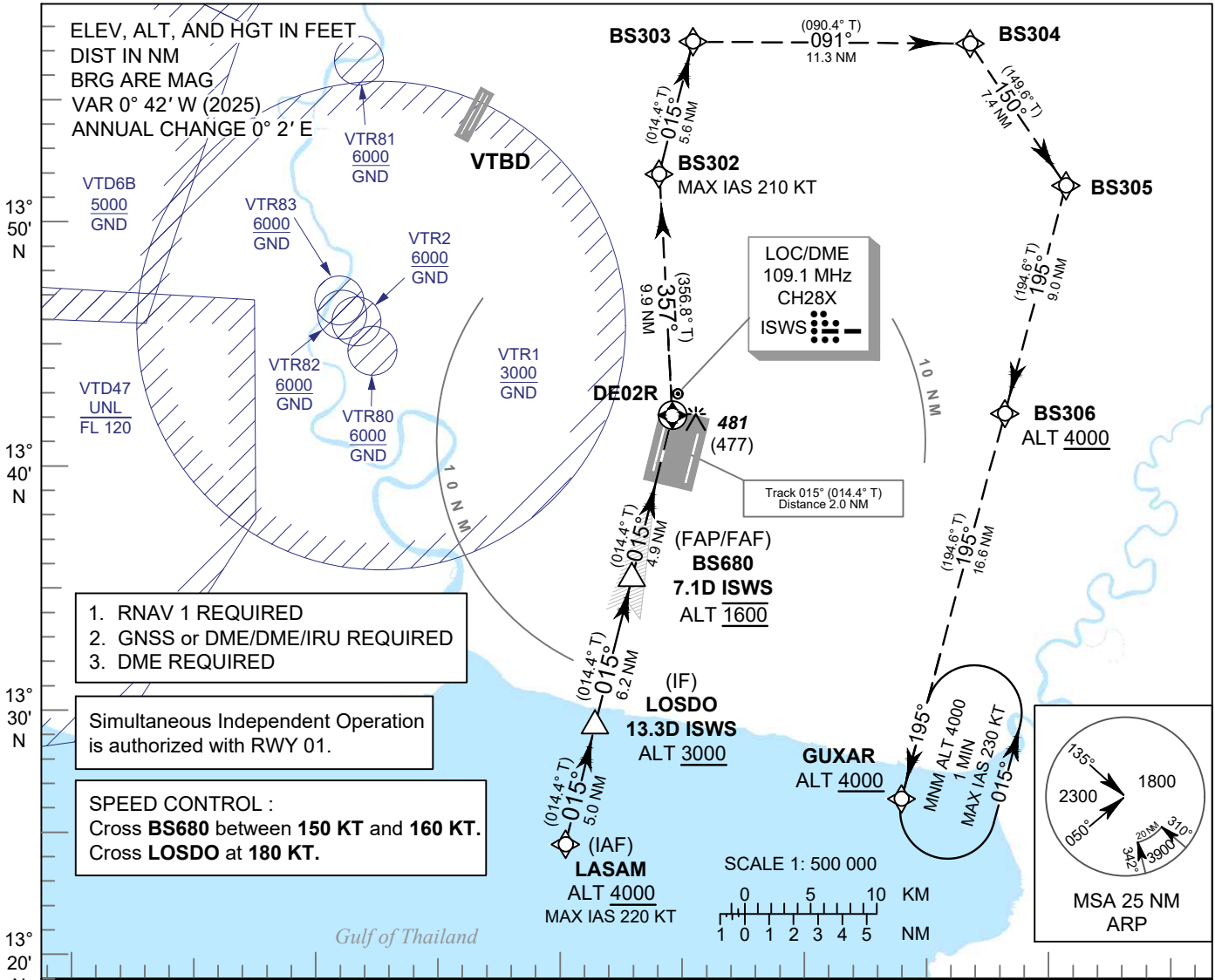


INSTRUMENT APPROACH CHART - ICAO **AERODROME ELEV 8 FT**
HEIGHTS RELATED TO THR RWY02R - ELEV 4 FT

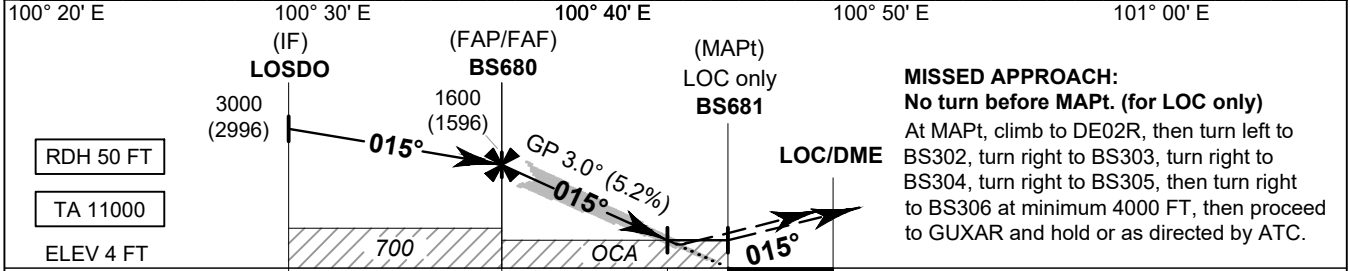
BANGKOK / Suvarnabhumi Intl (VTBS)

ILS or LOC z RWY02R
CAT II

APP	: 119.1, 274.5
	: 120.3, 274.5
	: 133.4, 274.5
	: 122.35, 274.5
	: 124.35, 274.5
	: 125.2, 274.5
ARR	: 121.1, 274.5
	: 126.3, 274.5
TWR	: 118.2, 262.5
	: 119.0
ARR ATIS	: 133.6, 278.6



- 1. RNAV 1 REQUIRED
 - 2. GNSS or DME/DME/IRU REQUIRED
 - 3. DME REQUIRED
- Simultaneous Independent Operation is authorized with RWY 01.
- SPEED CONTROL :**
 Cross **BS680** between **150 KT** and **160 KT**.
 Cross **LOSDO** at **180 KT**.



MISSED APPROACH:
No turn before MAPt. (for LOC only)
 At MAPt, climb to DE02R, then turn left to BS302, turn right to BS303, turn right to BS304, turn right to BS305, then turn right to BS306 at minimum 4000 FT, then proceed to GUXAR and hold or as directed by ATC.

(THR RWY02R)	13.3	7.1	3.7	2.2	0	DME FM LOC/DME
	11.1	4.9	1.5	0		NM FM THR

OCA/H	A	B	C	D	GS OUT	Distance (ISWS)	FAF	7 D	6 D	5 D	4 D	3.7 D
Straight-in Approach	CAT I*	370 (366)				Altitude (Height)	1600 (1596)	1570 (1566)	1255 (1251)	940 (936)	625 (621)	530 (526)
	CAT II**	310 (306)				Ground speed	knot	70	90	100	120	140
LOC only	530 (526)				Rate of descent (5.2%)	ft/min	369	474	527	632	737	843
Circling (OCH AAL)	800 (792)		900 (892)									

NOTE: *OCA (OCH) CAT I : 250 (246) FT of ILS procedures can be achieved for all aircraft categories which can commence a missed approach climb gradient of 5% (304 FT/NM) until passing ALT 1000 FT.
 **OCA (OCH) CAT II : 150 (146) FT of ILS procedures can be achieved for all aircraft categories which can commence a missed approach climb gradient of 4% (243 FT/NM) until passing ALT 1000 FT.

CHANGE: PDR.