

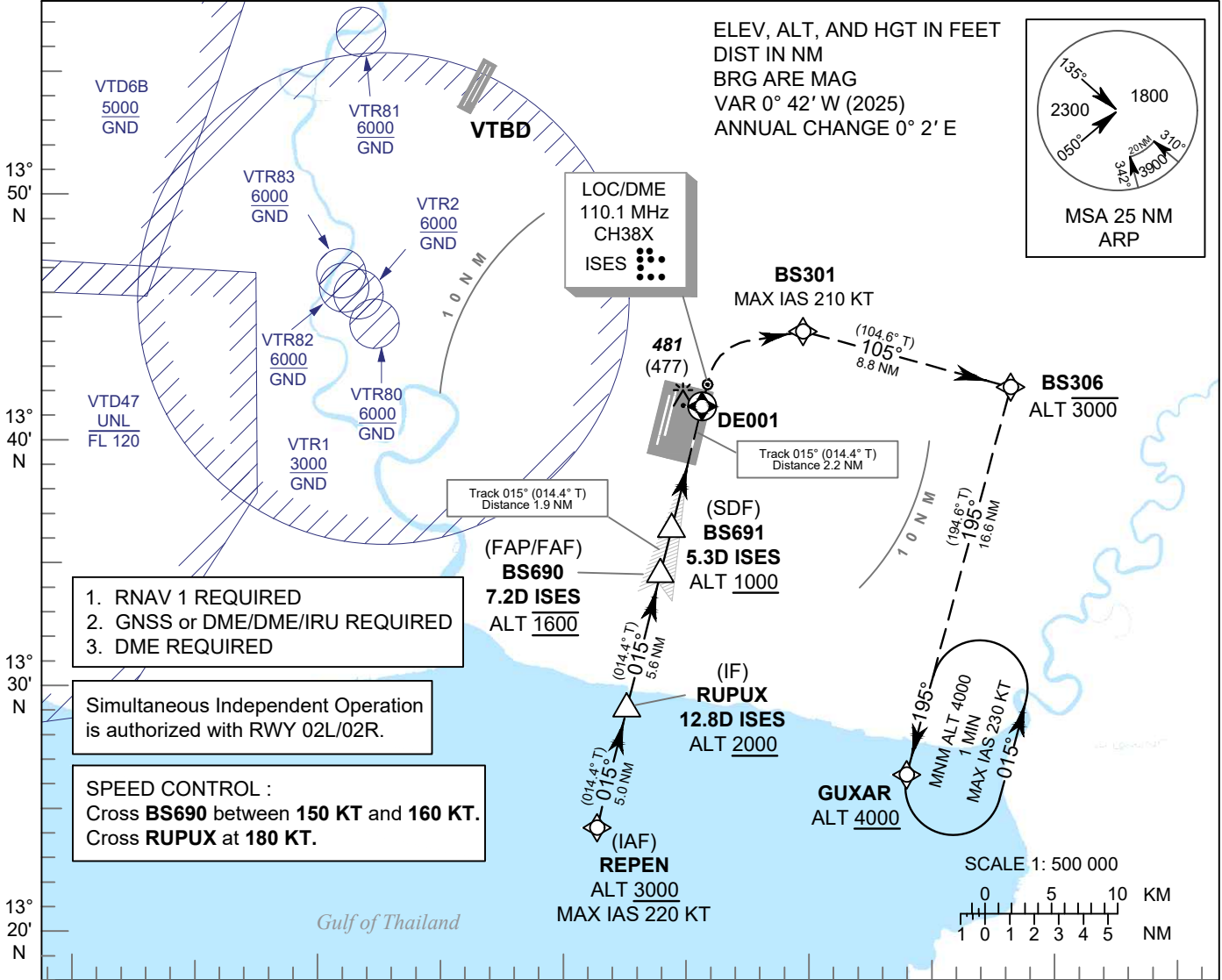
**INSTRUMENT APPROACH CHART - ICAO**

**AERODROME ELEV 8 FT**  
**HEIGHTS RELATED TO THR RWY01 - ELEV 4 FT**

APP	: 119.1, 274.5
	: 120.3, 274.5
	: 133.4, 274.5
	: 122.35, 274.5
	: 124.35, 274.5
	: 125.2, 274.5
ARR	: 121.1, 274.5
	: 126.3, 274.5
TWR	: 118.2, 262.5
	: 119.0
ARR ATIS	: 133.6, 278.6

**BANGKOK / Suvarnabhumi Intl (VTBS)**

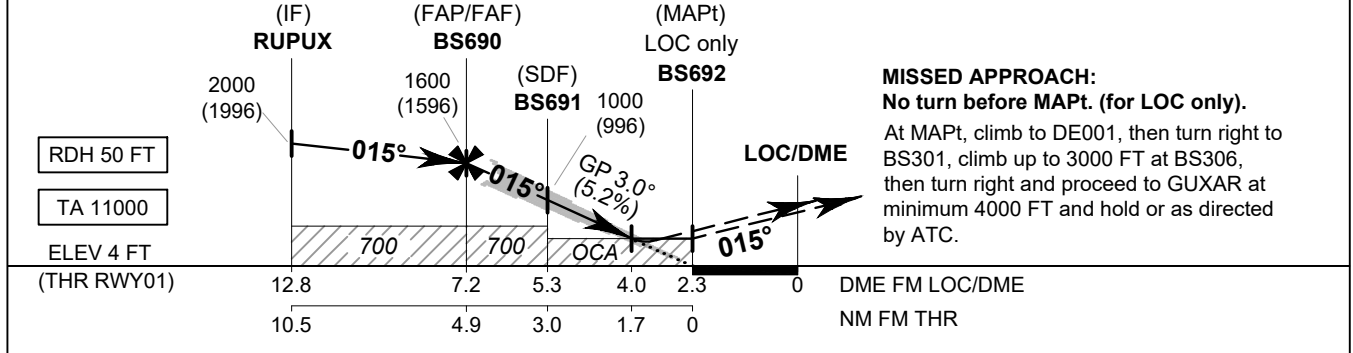
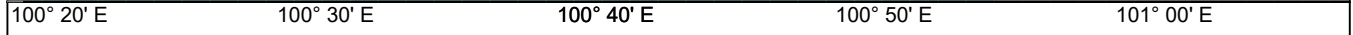
**ILS or LOC z RWY01**  
**CAT II**



1. RNAV 1 REQUIRED
2. GNSS or DME/DME/IRU REQUIRED
3. DME REQUIRED

Simultaneous Independent Operation is authorized with RWY 02L/02R.

**SPEED CONTROL :**  
 Cross **BS690** between **150 KT** and **160 KT**.  
 Cross **RUPUX** at **180 KT**.



**MISSED APPROACH:**  
**No turn before MAPt. (for LOC only).**  
 At MAPt, climb to DE001, then turn right to BS301, climb up to 3000 FT at BS306, then turn right and proceed to GUXAR at minimum 4000 FT and hold or as directed by ATC.

OCA/H		A	B	C	D	GS OUT	Distance (ISES)	FAF	7 D	6 D	5 D	4 D	
Straight-in Approach	CAT I	260 (256)					Distance (ISES)	1600	1540	1225	910	590	
	CAT II	190(186)				Altitude (Height)		(1596)	(1536)	(1221)	(906)	(586)	
LOC only		590 (586)				Ground speed	knot	70	90	100	120	140	160
Circling (OCH AAL)		800 (792)	900 (892)			Rate of descent (5.2%)	ft/min	369	474	527	632	737	843

CHANGE: PDR.