

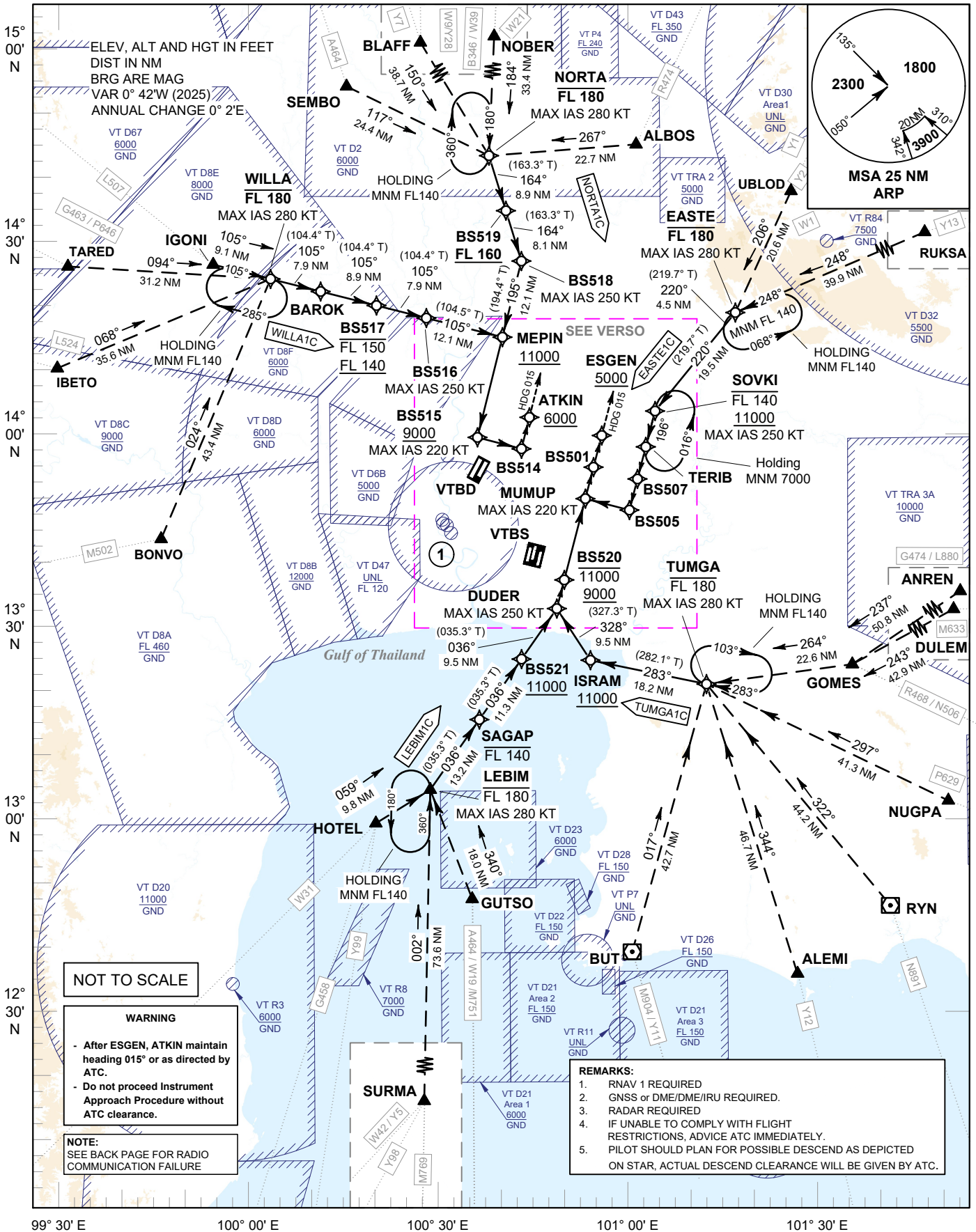
**STANDARD ARRIVAL CHART -  
INSTRUMENT (STAR) - ICAO**

TRANSITION ALTITUDE  
11000 FT

**SPEED RESTRICTION**  
MAX IAS 250 KT AT OR  
BELOW ALT 10000 FT  
UNLESS OTHERWISE  
AUTHORIZED BY ATC.

APP : 119.1 , 274.5  
: 120.3 , 274.5  
: 133.4 , 274.5  
: 122.35 , 274.5  
: 124.35 , 274.5  
: 125.2 , 274.5  
ARR : 121.1 , 274.5  
: 126.3 , 274.5  
TWR : 118.2 , 262.5  
: 119.0  
ARR ATIS : 133.6 , 278.6

**BANGKOK/Suvarnabhumi Intl (VTBS)**  
**RNAV RWY19/20L/20R**  
EASTE1C LEBIM1C NORTA1C  
TUMGA1C WILLA1C



**NOT TO SCALE**

**WARNING**

- After **ESGEN, ATKIN** maintain heading **015°** or as directed by ATC.
- Do not proceed Instrument Approach Procedure without ATC clearance.

**NOTE:**  
SEE BACK PAGE FOR RADIO COMMUNICATION FAILURE

**REMARKS:**

1. RNAV 1 REQUIRED
2. GNSS or DME/DME/IRU REQUIRED.
3. RADAR REQUIRED
4. IF UNABLE TO COMPLY WITH FLIGHT RESTRICTIONS, ADVISE ATC IMMEDIATELY.
5. PILOT SHOULD PLAN FOR POSSIBLE DESCEND AS DEPICTED ON STAR, ACTUAL DESCEND CLEARANCE WILL BE GIVEN BY ATC.

CHANGE: PDR.

99° 30' E      100° 00' E      100° 30' E      101° 00' E      101° 30' E