

**STANDARD ARRIVAL CHART -  
INSTRUMENT (STAR) - ICAO**

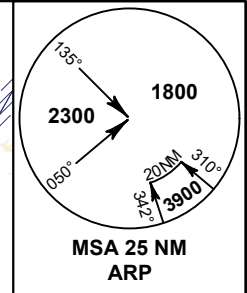
TRANSITION ALTITUDE  
11000 FT

**SPEED RESTRICTION**  
MAX IAS 250 KT AT OR  
BELOW ALT 10000 FT  
UNLESS OTHERWISE  
AUTHORIZED BY ATC.

APP	: 119.1, 274.5
	: 120.3, 274.5
	: 133.4, 274.5
	: 122.35, 274.5
	: 124.35, 274.5
	: 125.2, 274.5
ARR	: 121.1, 274.5
	: 126.3, 274.5
TWR	: 118.2, 262.5
	: 119.0
ARR ATIS	: 133.6, 278.6

**BANGKOK/Suvarnabhumi Intl (VTBS)  
RNAV RWY01/02L/02R**

EASTE1D LEBIM1D NORTA1D  
TUMGA1D WILLA1D



ELEV, ALT AND HGT IN FEET  
DIST IN NM  
BRG ARE MAG  
VAR 0° 42'W (2025)  
ANNUAL CHANGE 0° 2'E

NOT TO SCALE

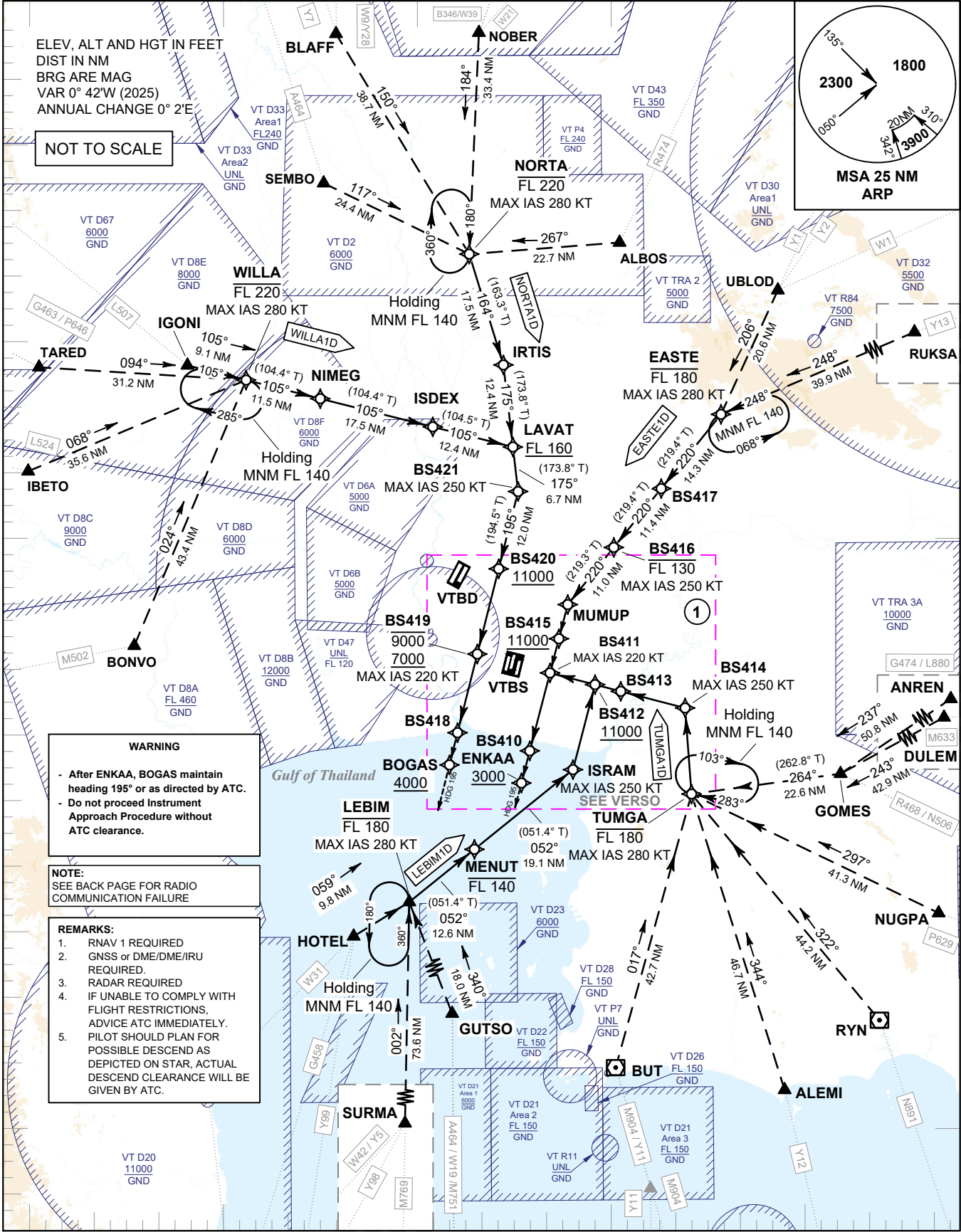
**WARNING**

- After ENKAA, BOGAS maintain heading 195° or as directed by ATC.
- Do not proceed Instrument Approach Procedure without ATC clearance.

**NOTE:**  
SEE BACK PAGE FOR RADIO COMMUNICATION FAILURE

**REMARKS:**

1. RNAV 1 REQUIRED
2. GNSS or DME/DME/IRU REQUIRED.
3. RADAR REQUIRED
4. IF UNABLE TO COMPLY WITH FLIGHT RESTRICTIONS, ADVISE ATC IMMEDIATELY.
5. PILOT SHOULD PLAN FOR POSSIBLE DESCEND AS DEPICTED ON STAR. ACTUAL DESCEND CLEARANCE WILL BE GIVEN BY ATC.



CHANGE: PDR.

99° 30' E      100° 00' E      100° 30' E      101° 00' E      101° 30' E