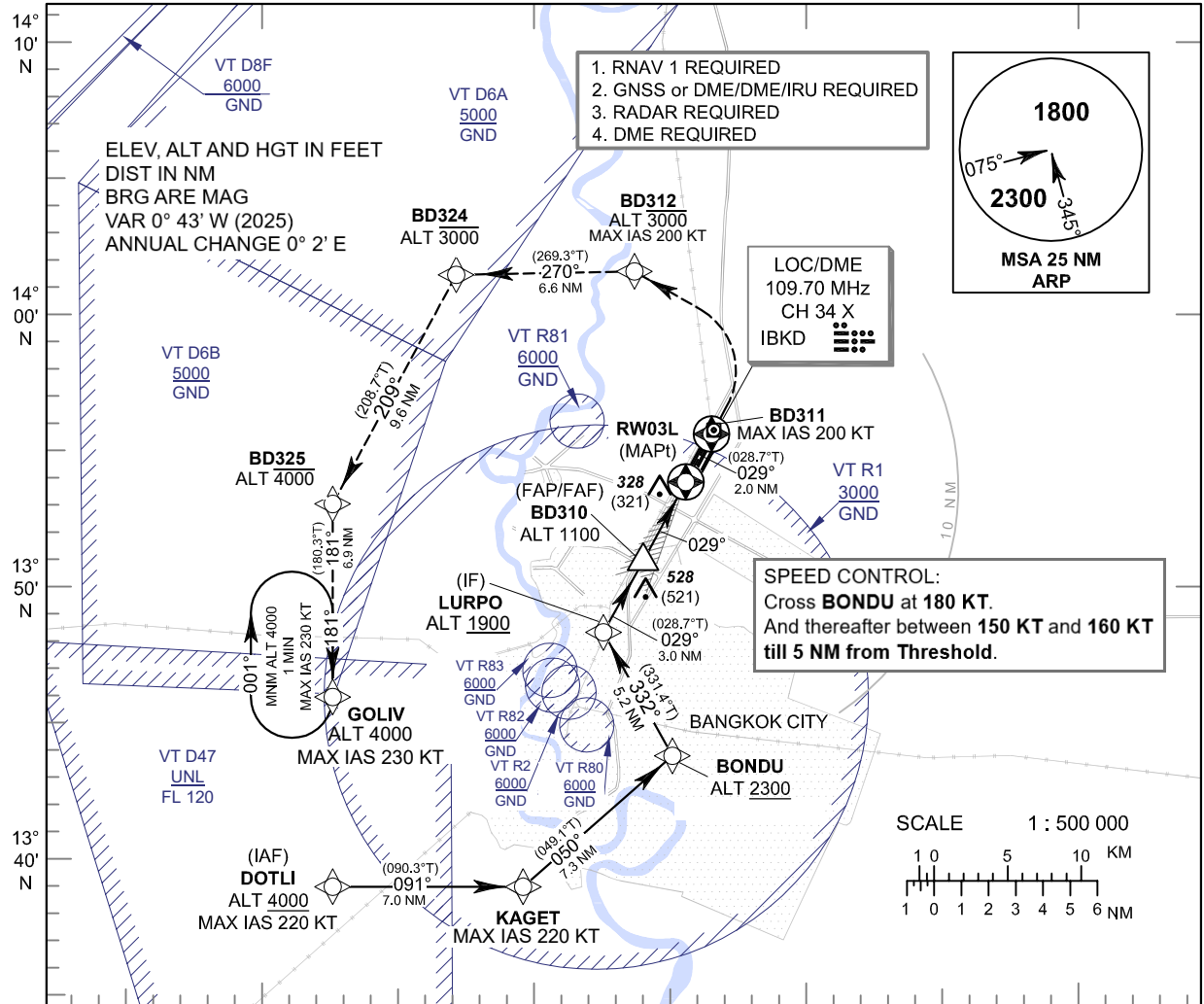


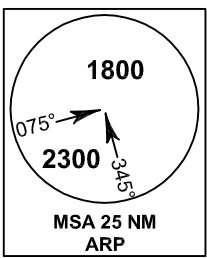
INSTRUMENT APPROACH CHART - ICAO **AERODROME ELEV 9 FT**
HEIGHTS RELATED TO THR RWY03L - ELEV 7 FT

APP	: 119.1, 274.5
	: 119.4, 274.5
	: 120.3, 274.5
	: 133.4, 274.5
	: 122.35, 274.5
	: 124.35, 274.5
	: 125.2, 274.5
DAR	: 133.0, 274.5
TWR	: 118.1, 236.6
ATIS	: 126.4, 344.6

BANGKOK / Don Mueang Intl (VTBD)
ILS or LOC z RWY03L

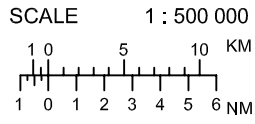


1. RNAV 1 REQUIRED
2. GNSS or DME/DME/IRU REQUIRED
3. RADAR REQUIRED
4. DME REQUIRED

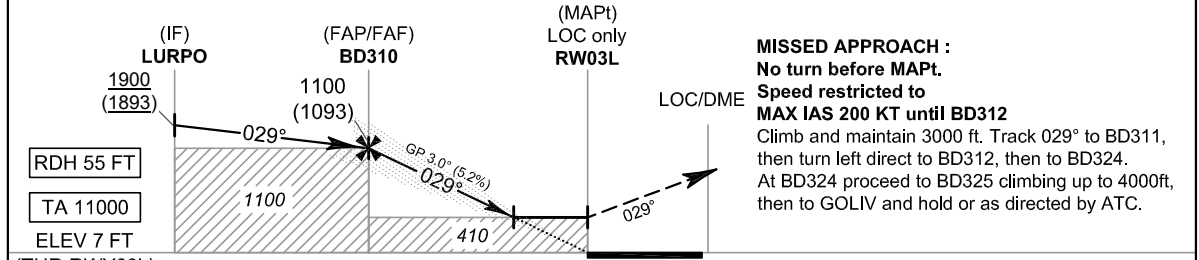


LOC/DME
 109.70 MHz
 CH 34 X
 IBKD

SPEED CONTROL:
 Cross **BONDU** at **180 KT**.
 And thereafter between **150 KT** and **160 KT**
 till **5 NM** from **Threshold**.



100° 20' E 100° 30' E 100° 40' E 100° 50' E



MISSED APPROACH :
No turn before MAPt.
Speed restricted to MAX IAS 200 KT until BD312
 Climb and maintain 3000 ft. Track 029° to BD311, then turn left direct to BD312, then to BD324.
 At BD324 proceed to BD325 climbing up to 4000ft, then to GOLIV and hold or as directed by ATC.

OCA/H		A	B	C	D	GS OUT	Distance (IBKD)		FAF	4 D		3.2 D		
Straight - in Approach		CAT I					Altitude (Height)		1100 (1093)	660 (653)		410 (403)		
LOC only		410 (403)				Ground speed		knot	70	90	100	120	140	160
Circling (OCH AAL)		800 (791)			1100 (1091)	Rate of descent (5.2%)		ft/min	369	474	527	632	737	843

CHANGE: PDR.