

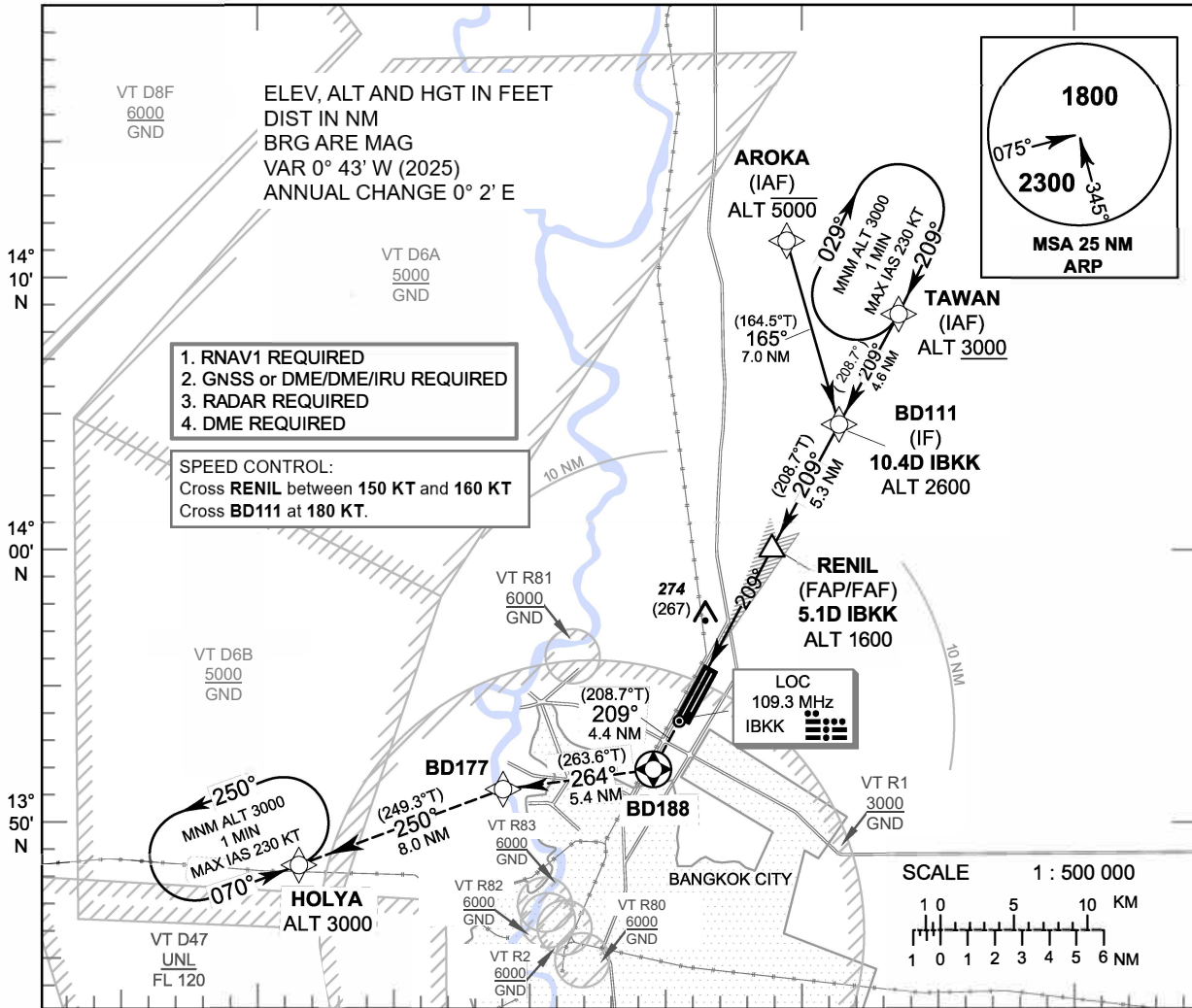
**INSTRUMENT APPROACH CHART - ICAO**      **AERODROME ELEV 9 FT**  
**HEIGHTS RELATED TO THR RWY21R - ELEV 7 FT**

APP	: 119.1, 274.5
	: 119.4, 274.5
	: 120.3, 274.5
	: 133.4, 274.5
	: 122.35, 274.5
	: 124.35, 274.5
	: 125.2, 274.5
DAR	: 133.0, 274.5
TWR	: 118.1, 236.6
ATIS	: 126.4, 344.6

**BANGKOK / Don Mueang Intl (VTBD)**

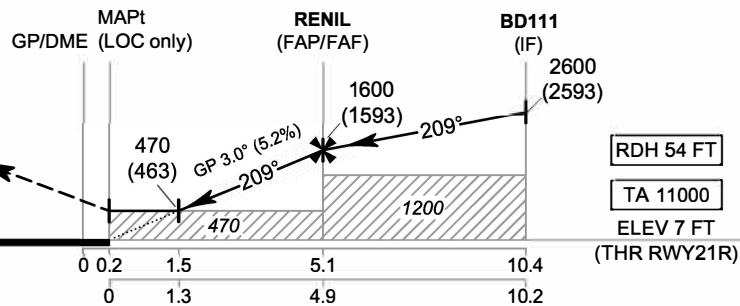
**ILS or LOC z RWY21R**

**CAT II**



**MISSED APPROACH :**

**No turn before MAPt (for LOC only).**  
 Climb on track 209° to BD188, then turn right to BD177, then proceed to HOLYA at 3000 FT, and hold or as directed by ATC.



OCA/H	A	B	C	D	GS OUT	Distance (IBKK)	1.5 D	2 D	3 D	4 D	5 D	FAF	
						Straight - in Approach	220 (213)					Altitude (Height)	470 (463)
LOC only	470 (463)					Ground speed	knot	70	90	100	120	140	160
Circling (OCH AAL)	800 (791)				1100 (1091)	Rate of descent (5.2%)	(ft/min)	369	474	527	632	737	843

CHANGE: PDR.