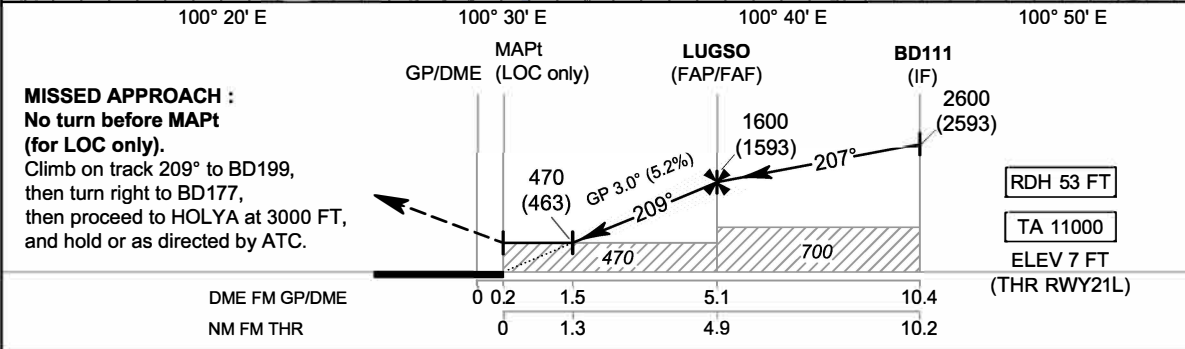
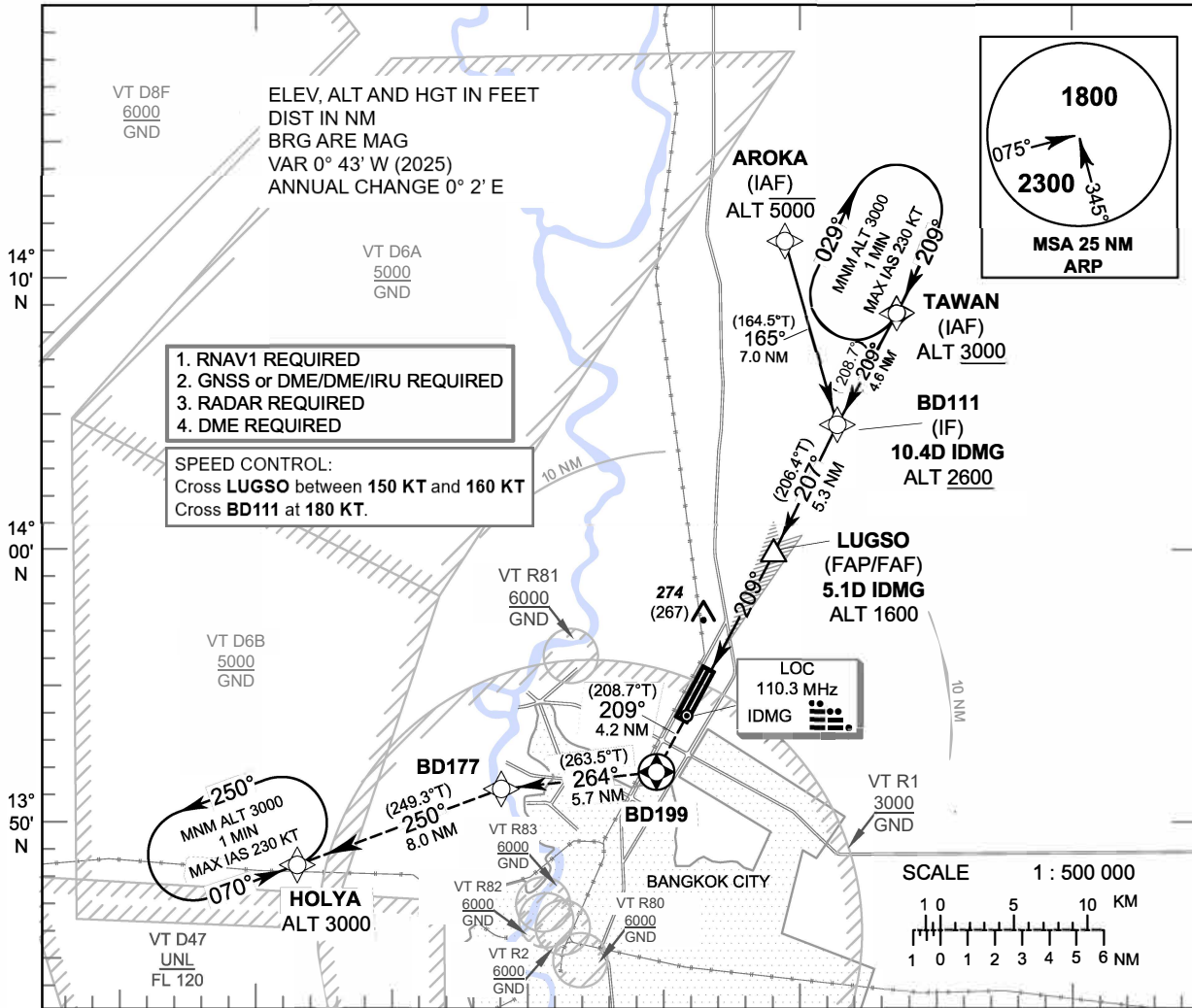


INSTRUMENT APPROACH CHART - ICAO **AERODROME ELEV 9 FT**
HEIGHTS RELATED TO THR RWY21L - ELEV 7 FT

APP : 119.1, 274.5
 : 119.4, 274.5
 : 120.3, 274.5
 : 133.4, 274.5
 : 122.35, 274.5
 : 124.35, 274.5
 : 125.2, 274.5
 DAR : 133.0, 274.5
 TWR : 118.1, 236.6
 ATIS : 126.4, 344.6

BANGKOK / Don Mueang Intl (VTBD)
ILS or LOC z RWY21L



OCA/H		A	B	C	D	GS OUT	Distance (IDMG)	1.5 D	2 D	3 D	4 D	5 D	FAF
Straight - in Approach	CAT I	220 (213)					Ground speed	Altitude (Height)	470 (463)	625 (618)	940 (933)	1260 (1253)	1575 (1568)
	LOC only	470 (463)				knot		70	90	100	120	140	160
Circling (OCH AAL)		800 (791)		1100 (1091)		Rate of descent (5.2%)	(ft/min)	369	474	527	632	737	843

CHANGE: PDR.