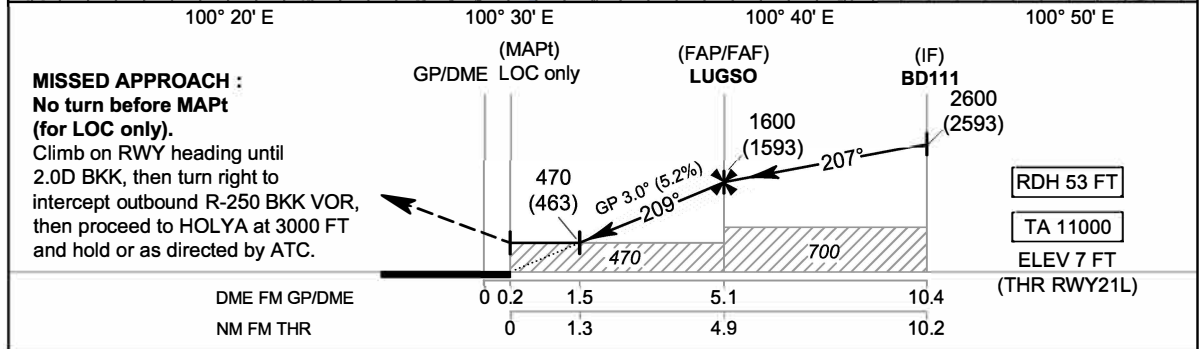
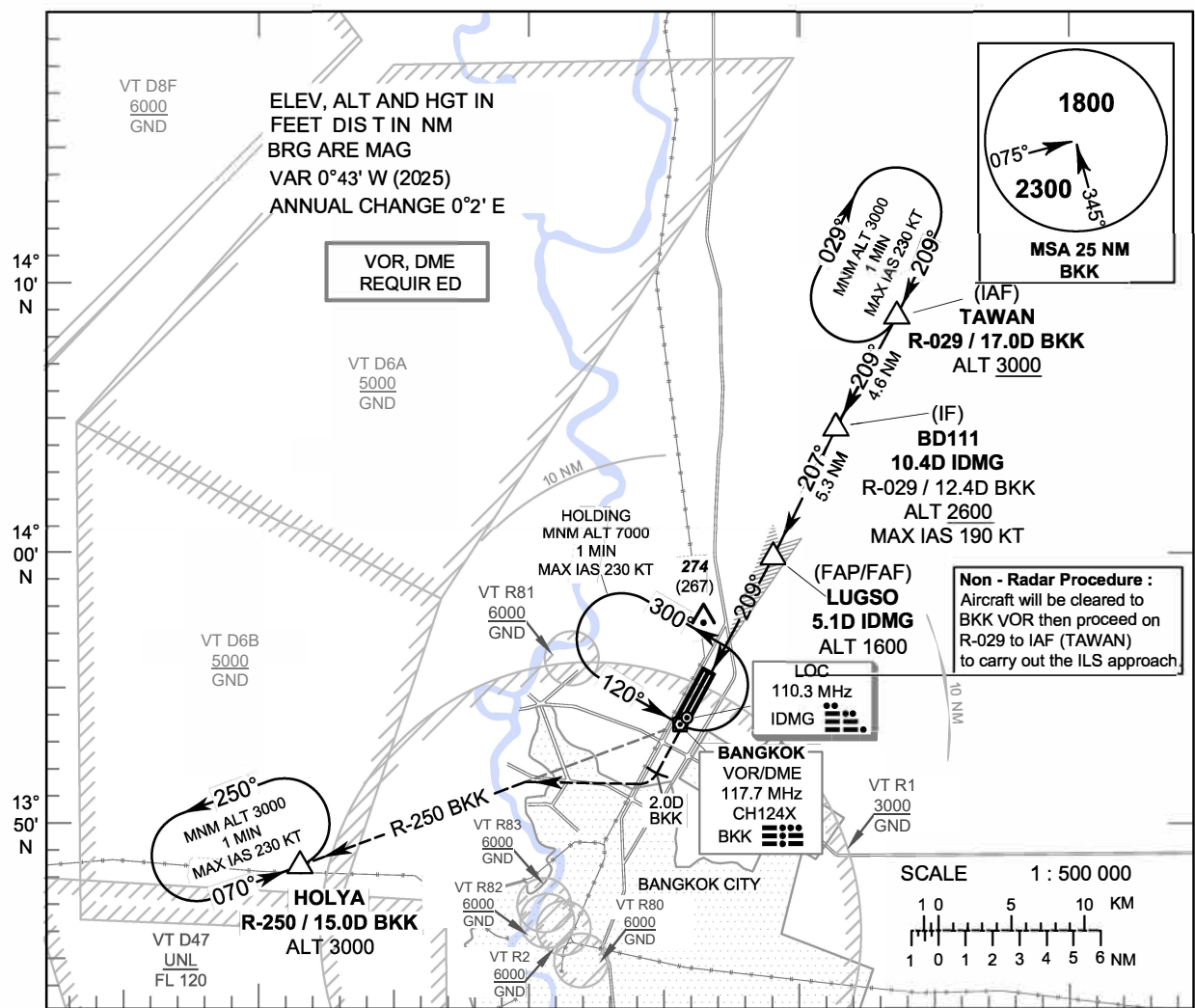


**INSTRUMENT APPROACH CHART - ICAO** AERODROME ELEV 9 FT  
 HEIGHTS RELATED TO THR RWY21L - ELEV 7 FT

|      |                 |
|------|-----------------|
| APP  | : 119.1,274.5   |
|      | : 119.4,274.5   |
|      | : 120.3,274.5   |
|      | : 133.4, 274.5  |
|      | : 122.35, 274.5 |
|      | : 124.35, 274.5 |
|      | : 125.2,274.5   |
| DAR  | : 133.0,274.5   |
| TWR  | : 118.1, 236.6  |
| ATIS | : 126.4,344.6   |

**BANGKOK / Don Mueang Intl (VTBD)**  
 ILS or LOC y RWY21L



|   |  |                        |                 |            |      |        |                        |           |           |           |             |             |             |     |
|---|--|------------------------|-----------------|------------|------|--------|------------------------|-----------|-----------|-----------|-------------|-------------|-------------|-----|
| <b>MISSED APPROACH :</b><br>No turn before MAPt (for LOC only).<br>Climb on RWY heading until 2.0D BKK, then turn right to intercept outbound R-250 BKK VOR, then proceed to HOLYA at 3000 FT and hold or as directed by ATC. |  | (MAPt) GP/DME LOC only | (FAP/FAF) LUGSO | (IF) BD111 |      |        |                        |           |           |           |             |             |             |     |
|   |  | 0.2                    | 1.5             | 5.1        | 10.4 |        |                        |           |           |           |             |             |             |     |
|   |  | 0                      | 1.3             | 4.9        | 10.2 |        |                        |           |           |           |             |             |             |     |
| OCA/H   |  | A                      | B               | C          | D    | GS OUT | Distance (IDMG)        | 1.5 D     | 2 D       | 3 D       | 4 D         | 5 D         | FAF         |     |
| Straight - in Approach  |  | 220 (213)              |                 |            |      | GS OUT | Altitude (Height)      | 470 (463) | 625 (618) | 940 (933) | 1260 (1253) | 1575 (1568) | 1600 (1593) |     |
| LOC only  |  | 470 (463)              |                 |            |      |        | Ground speed           | knot      | 70        | 90        | 100         | 120         | 140         | 160 |
| Circling (OCH AAL)  |  | 800 (791)              |                 |            |      |        | Rate of descent (5.2%) | ft/min    | 369       | 474       | 527         | 632         | 737         | 843 |

CHANGE: PDR.