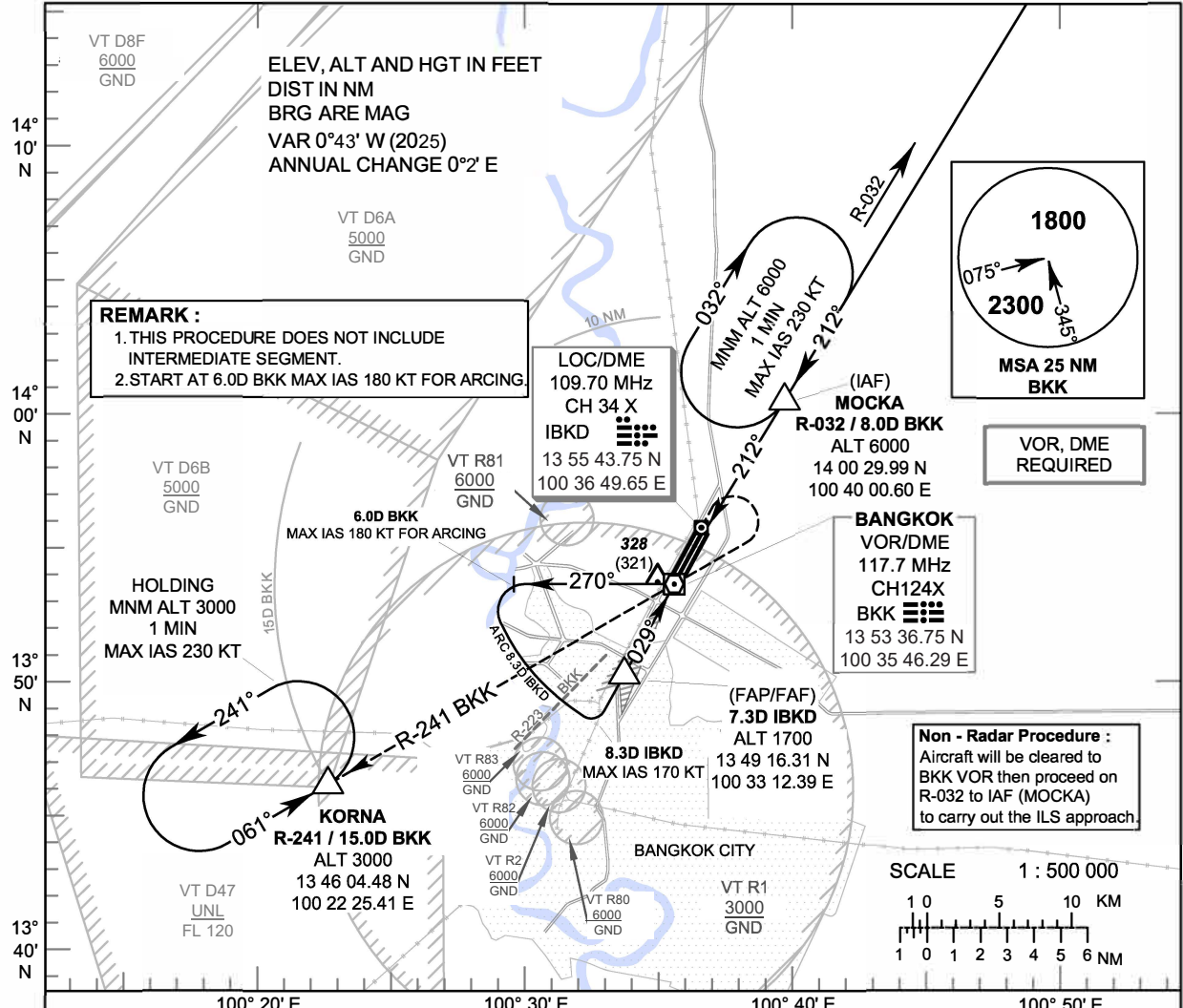


**INSTRUMENT APPROACH CHART - ICAO** **AERODROME ELEV 9 FT**  
**HEIGHTS RELATED TO THR RWY03L - ELEV 7 FT**

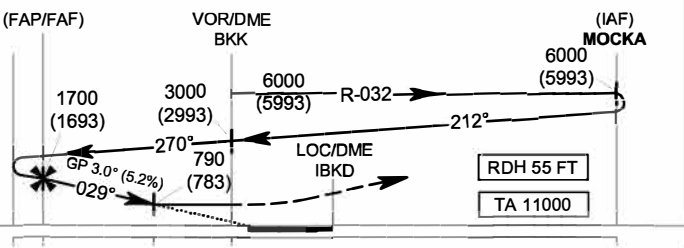
APP	: 119.1, 274.5
	: 119.4, 274.5
	: 120.3, 274.5
	: 133.4, 274.5
	: 122.35, 274.5
	: 124.35, 274.5
	: 125.2, 274.5
DAR	: 133.0, 274.5
TWR	: 118.1, 236.6
ATIS	: 126.4, 344.6

**BANGKOK / Don Mueang Intl (VTBD)**  
**ILS or LOC y RWY03L**



**MISSED APPROACH :**  
**No turn before MAPt (for LOC only).**  
 Climb on track 029° direct to the LOC/DME then climb outbound on R-029 BKK VOR to 1500 FT then turn right to VOR/DME BKK and continue climb on R-241 BKK VOR to 15 DME BKK VOR FIX at 3000 FT and hold or as directed by ATC.

**ELEV 7 FT**  
**(THR RWY03L)**



CHANGE: PDR.

DME FM VOR/DME	6.0	5.0	2.1	0	8.0
DME FM LOC/DME	7.4	4.5	2.2	0	
NM FM THR 03L	5.2	2.3	0		

OCA/H	A	B	C	D	Distance (IBKD)	7 DME	6 DME	5 DME	4 DME	3.4 DME		
Straight - in Approach	CAT I	220 (213)				Altitude (Height)	1605 (1598)	1290 (1283)	975 (968)	660 (653)	470 (463)	
		790 (783)				Ground speed	knot	100	120	140	160	180
LOC only	790 (783)				FAF-MAPt 3.9 NM (min:s)	2:20	1:57	1:40	1:28	1:18	1:10	
Circling (OCH AAL)	800 (791)	1100 (1091)	Rate of descent (ft/min)				530	637	743	849	955	1061