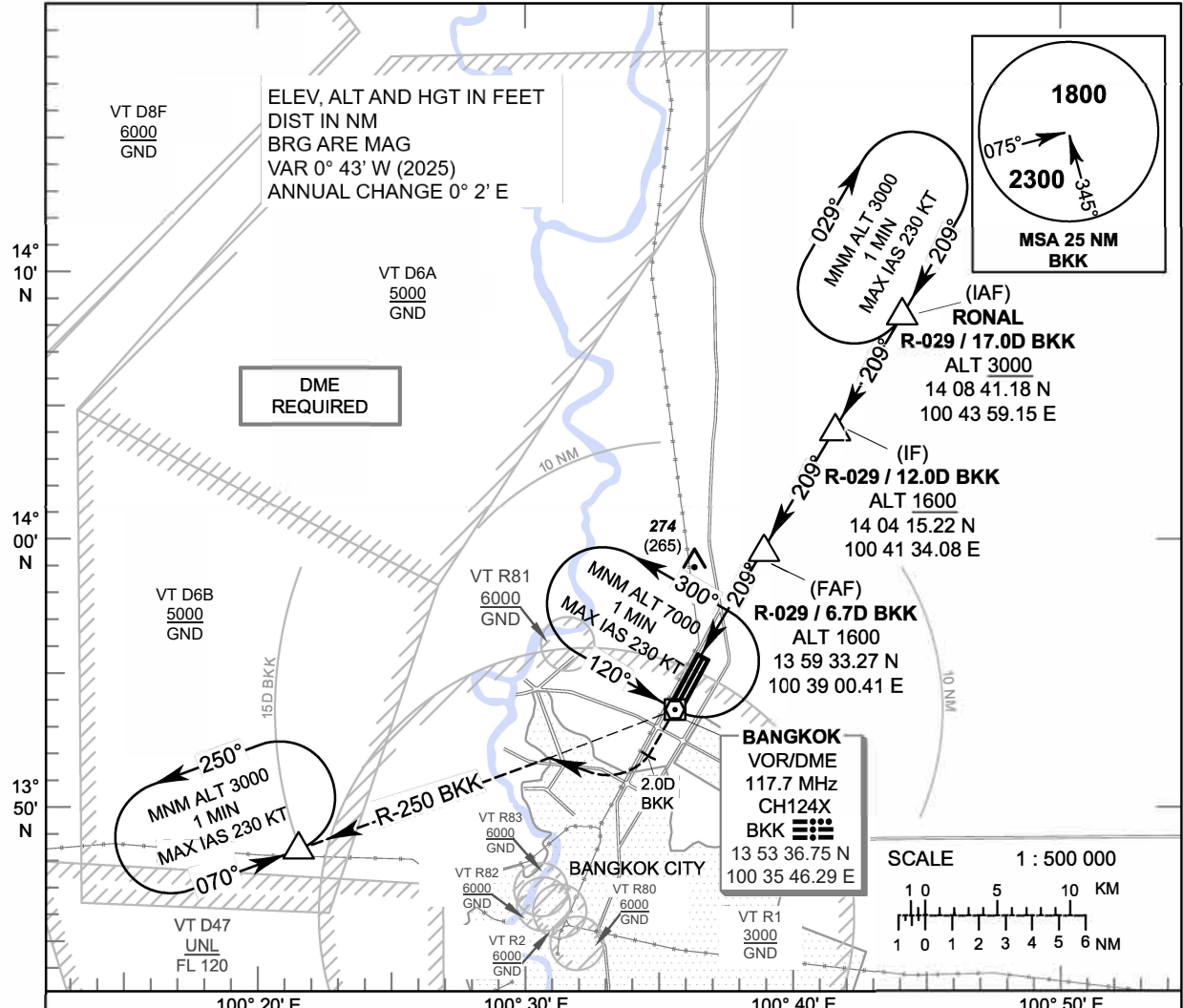


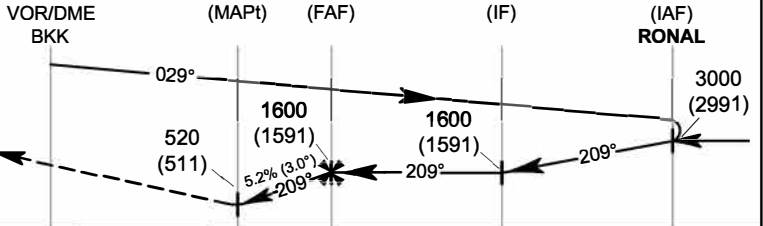
INSTRUMENT APPROACH CHART - ICAO **AERODROME ELEV 9 FT**
HEIGHTS RELATED TO AERODROME ELEV

APP	: 119.1, 274.5
	: 119.4, 274.5
	: 120.3, 274.5
	: 133.4, 274.5
	: 122.35, 274.5
	: 124.35, 274.5
	: 125.2, 274.5
DAR	: 133.0, 274.5
TWR	: 118.1, 236.6
ATIS	: 126.4, 344.6

BANGKOK / Don Mueang Intl (VTBD)
VOR RWY21R



MISSED APPROACH :
No turn before MAPt.
 Climb straight ahead to VOR/DME BKK until 2 DME BKK outbound then turn right continue climb on R-250 BKK VOR to 3000 FT and hold at 15 DME BKK VOR or as directed by ATC.



ELEV 7 FT (THR RWY21R)	NM FM THR 21R	0	1.4	4.8	10.1	15.1
TA 11000	DME FM VOR/DME	0	3.3	6.7	12.0	17.0

OCA/H	A	B	C	D	Distance (BKK)							
					3.3 DME	4 DME	5 DME	6 DME				
Straight - in Approach	520 (511)				Altitude (Height)		520 (511)	730 (721)	1050 (1041)	1360 (1351)		
	Ground speed		knot		100	120	140	160	180	200		
Circling (OCH AAL)	800 (791)			1100 (1091)	FAF-MAPt 3.4 NM (min:s)		2:02	1:42	1:27	1:17	1:08	1:01
	Rate of descent		(ft/min)		531	637	743	849	955	1061		

CHANGE: PDR.