

**STANDARD ARRIVAL CHART -  
INSTRUMENT (STAR) - ICAO**

TRANSITION ALTITUDE  
11000 FT

**SPEED RESTRICTION**  
MAX IAS 250 KT AT OR  
BELOW ALT 10000 FT  
UNLESS OTHERWISE  
AUTHORIZED BY ATC.

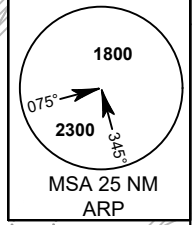
APP : 119.1, 274.5  
: 119.4, 274.5  
: 120.3, 274.5  
: 133.4, 274.5  
: 122.35, 274.5  
: 124.35, 274.5  
: 125.2, 274.5  
DAR : 133.0, 274.5  
TWR : 118.1, 236.6  
ATIS : 126.4, 344.6

**BANGKOK/Don Mueang Intl (VTBD)  
RNAV RWY03L/03R**

ENDUU1B NAKON1B  
SABAI1B SEHNA1B WEHHA1B

ELEV, ALT AND HGT IN FEET  
DIST IN NM  
BRG ARE MAG  
VAR 0° 43' W (2025)  
ANNUAL CHANGE 0° 2' E

NOT TO SCALE



**NOTE:**  
SEE BACK PAGE FOR  
RADIO COMMUNICATION FAILURE

- REMARKS:**
1. RNAV1 REQUIRED.
  2. GNSS or DME/DME/IRU REQUIRED.
  3. RADAR REQUIRED.
  4. FOR NON-RNAV EQUIPPED ACFT, PILOT SHALL INFORM ATC IN ORDER TO GET RADAR GUIDANCE.
  5. PILOT SHOULD PLAN FOR POSSIBLE DESCEND AS DEPICTED ON STAR, ACTUAL DESCEND CLEARANCE WILL BE GIVEN BY ATC.
  6. IF UNABLE TO COMPLY WITH FLIGHT RESTRICTIONS, ADVISE ATC IMMEDIATELY.

CHANGE: PDR.

