

**STANDARD DEPARTURE CHART-
INSTRUMENT (SID) - ICAO**

TRANSITION ALTITUDE
11000 FT

SPEED RESTRICTION
MAX IAS 250 KT AT OR
BELOW ALT 10000 FT
UNLESS OTHERWISE
AUTHORIZED BY ATC.

APP : 119.1, 274.5
: 119.4, 274.5
: 120.3, 274.5
: 133.4, 274.5
: 122.35, 274.5
: 124.35, 274.5
: 125.2, 274.5
DAR : 133.0, 274.5
TWR : 118.1, 236.6
DEP ATIS : 118.55

**BANGKOK/Don Mueang Intl (VTBD)
RNAV RWY03R**

BONVO1D DOSBU1D GORSI1D
HHN1D KASNI1D KIGOB1D
PASTO1D REGOS1D
RYN1D SABIS2D UKERA1D

ELEV, ALT IN FEET
DIST IN NM
BRG ARE MAG
VAR 0° 43' W (2025)
ANNUAL CHANGE 0° 2' E

**INITIAL CLIMB CLEARANCE 6000 FT OR
AS DIRECTED BY ATC.**

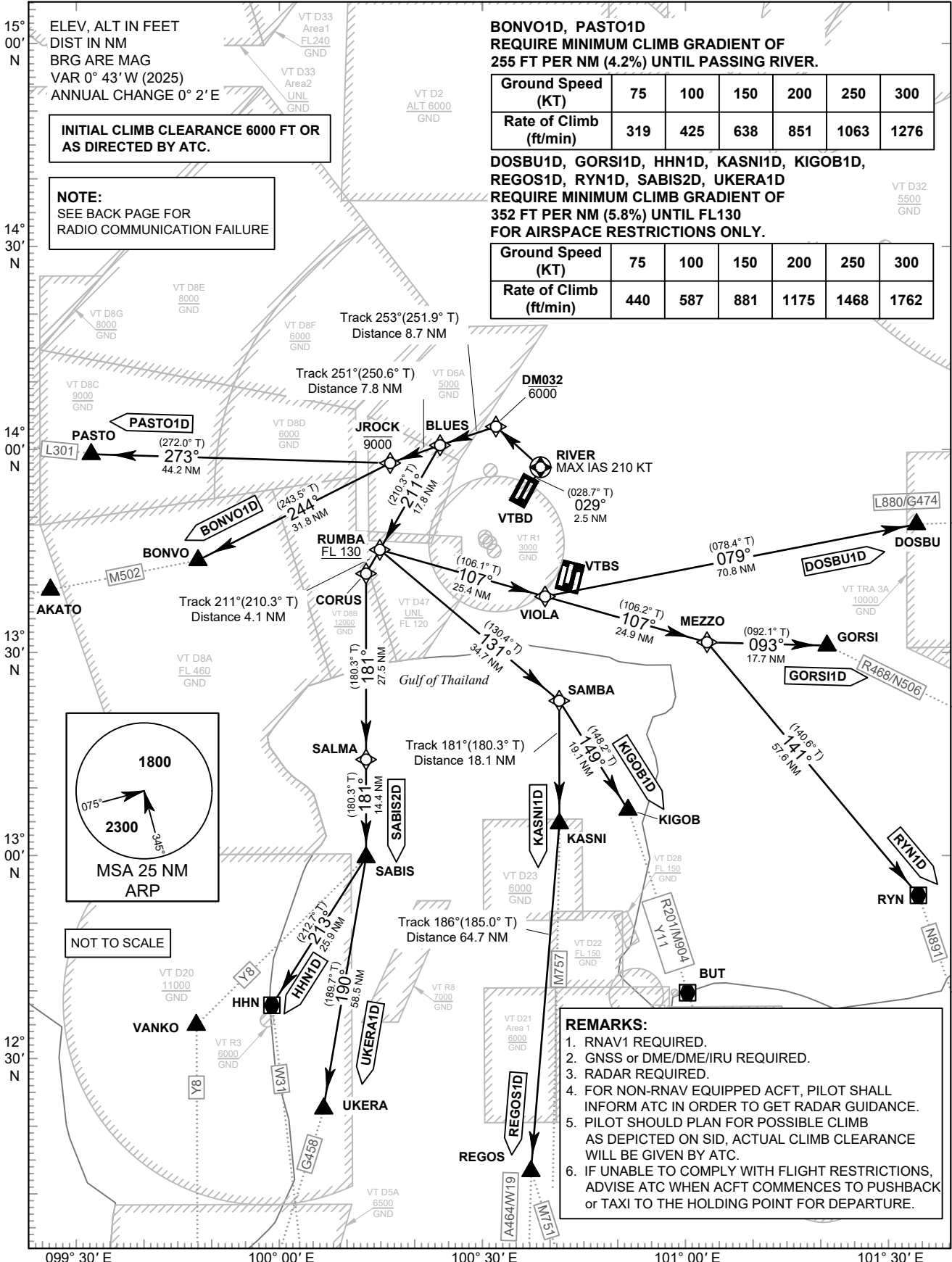
NOTE:
SEE BACK PAGE FOR
RADIO COMMUNICATION FAILURE

**BONVO1D, PASTO1D
REQUIRE MINIMUM CLIMB GRADIENT OF
255 FT PER NM (4.2%) UNTIL PASSING RIVER.**

Ground Speed (KT)	75	100	150	200	250	300
Rate of Climb (ft/min)	319	425	638	851	1063	1276

**DOSBU1D, GORSI1D, HHN1D, KASNI1D, KIGOB1D,
REGOS1D, RYN1D, SABIS2D, UKERA1D
REQUIRE MINIMUM CLIMB GRADIENT OF
352 FT PER NM (5.8%) UNTIL FL130
FOR AIRSPACE RESTRICTIONS ONLY.**

Ground Speed (KT)	75	100	150	200	250	300
Rate of Climb (ft/min)	440	587	881	1175	1468	1762



CHANGE: PDR.