

**STANDARD DEPARTURE CHART-  
INSTRUMENT (SID) - ICAO**

TRANSITION ALTITUDE  
11000 FT

SPEED RESTRICTION  
MAX IAS 250 KT AT OR  
BELOW ALT 10000 FT  
UNLESS OTHERWISE  
AUTHORIZED BY ATC.

APP	: 119.1, 274.5
	: 119.4, 274.5
	: 120.3, 274.5
	: 133.4, 274.5
	: 122.35, 274.5
	: 124.35, 274.5
	: 125.2, 274.5
DAR	: 133.0, 274.5
TWR	: 118.1, 236.6
DEP ATIS	: 118.55

**BANGKOK/Don Mueang Intl (VTBD)  
RNAV RWY21R**

DOSBU3A GORSI3A HHN3A  
KASNI3A KIGOB3A REGOS3A  
RYN3A SABIS3A UKERA3A

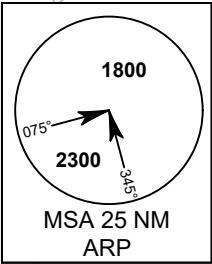
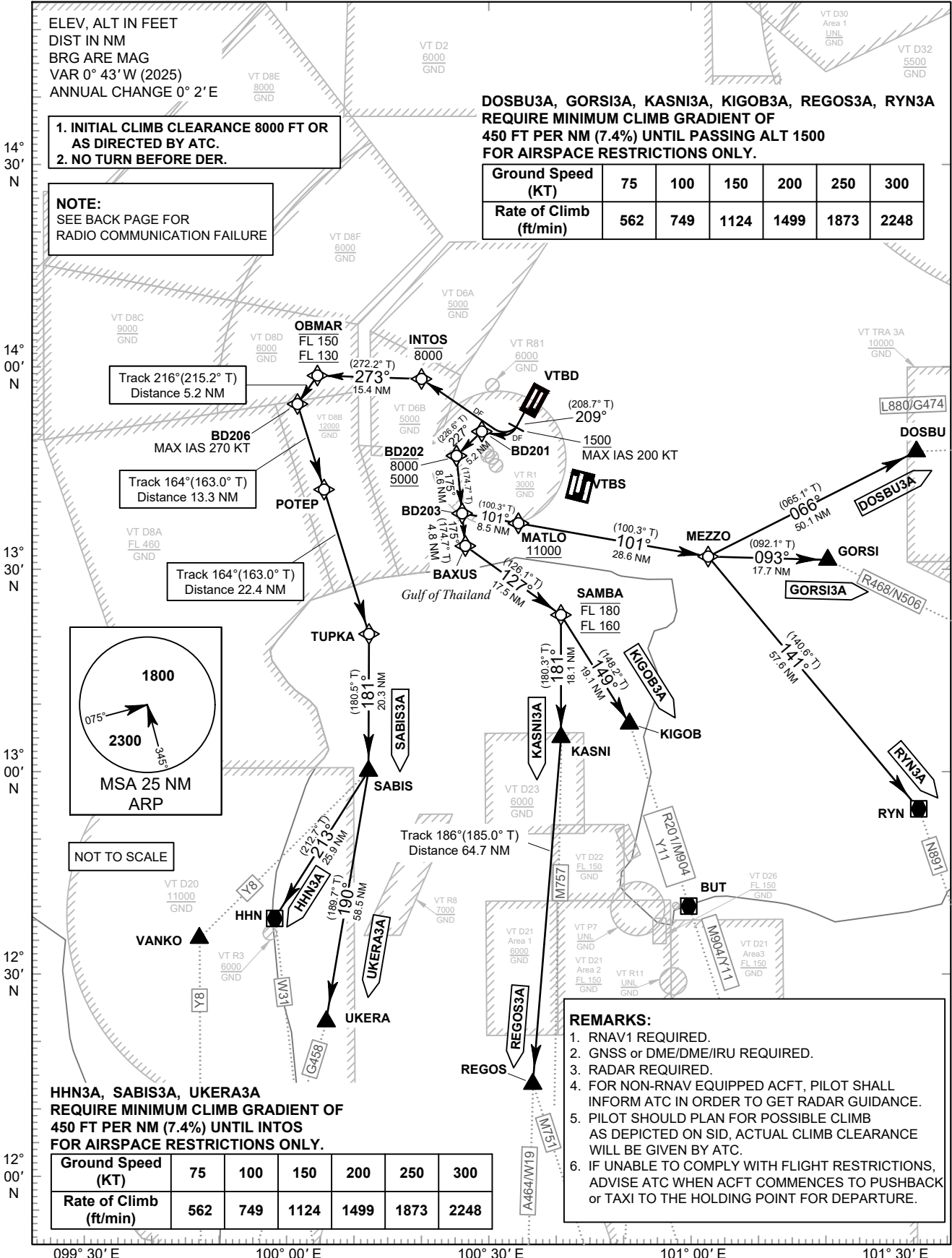
ELEV. ALT IN FEET  
DIST IN NM  
BRG ARE MAG  
VAR 0° 43' W (2025)  
ANNUAL CHANGE 0° 2' E

- INITIAL CLIMB CLEARANCE 8000 FT OR AS DIRECTED BY ATC.
- NO TURN BEFORE DER.

**NOTE:**  
SEE BACK PAGE FOR  
RADIO COMMUNICATION FAILURE

DOSBU3A, GORSI3A, KASNI3A, KIGOB3A, REGOS3A, RYN3A  
REQUIRE MINIMUM CLIMB GRADIENT OF  
450 FT PER NM (7.4%) UNTIL PASSING ALT 1500  
FOR AIRSPACE RESTRICTIONS ONLY.

Ground Speed (KT)	75	100	150	200	250	300
Rate of Climb (ft/min)	562	749	1124	1499	1873	2248



HHN3A, SABIS3A, UKERA3A  
REQUIRE MINIMUM CLIMB GRADIENT OF  
450 FT PER NM (7.4%) UNTIL INTOS  
FOR AIRSPACE RESTRICTIONS ONLY.

Ground Speed (KT)	75	100	150	200	250	300
Rate of Climb (ft/min)	562	749	1124	1499	1873	2248

- REMARKS:**
- RNAV1 REQUIRED.
  - GNSS or DME/DME/IRU REQUIRED.
  - RADAR REQUIRED.
  - FOR NON-RNAV EQUIPPED ACFT, PILOT SHALL INFORM ATC IN ORDER TO GET RADAR GUIDANCE.
  - PILOT SHOULD PLAN FOR POSSIBLE CLIMB AS DEPICTED ON SID, ACTUAL CLIMB CLEARANCE WILL BE GIVEN BY ATC.
  - IF UNABLE TO COMPLY WITH FLIGHT RESTRICTIONS, ADVISE ATC WHEN ACFT COMMENCES TO PUSHBACK or TAXI TO THE HOLDING POINT FOR DEPARTURE.

CHANGE: PDR.