

**STANDARD DEPARTURE CHART-
INSTRUMENT (SID) - ICAO**

TRANSITION ALTITUDE
11000 FT

SPEED RESTRICTION
MAX IAS 250 KT AT OR
BELOW ALT 10000 FT
UNLESS OTHERWISE
AUTHORIZED BY ATC.

APP : 119.1, 274.5
: 119.4, 274.5
: 120.3, 274.5
: 133.4, 274.5
: 122.35, 274.5
: 124.35, 274.5
: 125.2, 274.5
DAR : 133.0, 274.5
TWR : 118.1, 236.6
DEP ATIS : 118.55

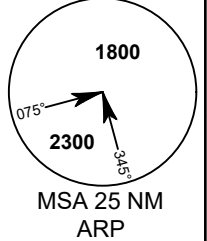
**BANGKOK/Don Mueang Intl (VTBD)
RNAV RWY21L**

ALBOS3C BONVO3C NOBER4C
NUNLI3C OLVUK3C PASTO3C
ROBKA3C SEMBO4C TARED3C
UPKUP3C UGUVO3C

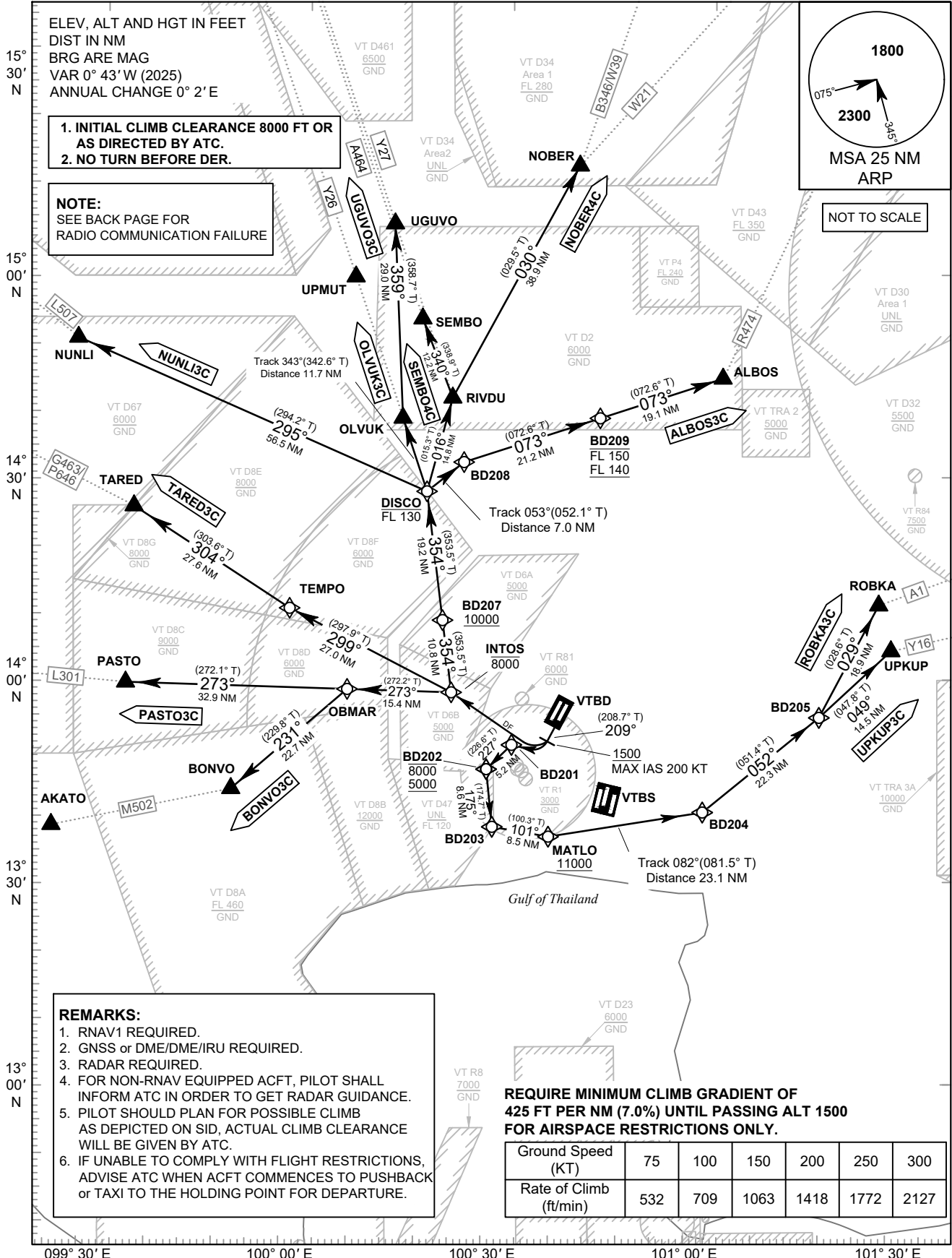
ELEV, ALT AND HGT IN FEET
DIST IN NM
BRG ARE MAG
VAR 0° 43' W (2025)
ANNUAL CHANGE 0° 2' E

- INITIAL CLIMB CLEARANCE 8000 FT OR AS DIRECTED BY ATC.
- NO TURN BEFORE DER.

NOTE:
SEE BACK PAGE FOR
RADIO COMMUNICATION FAILURE



NOT TO SCALE



- REMARKS:**
- RNAV1 REQUIRED.
 - GNSS or DME/DME/IRU REQUIRED.
 - RADAR REQUIRED.
 - FOR NON-RNAV EQUIPPED ACFT, PILOT SHALL INFORM ATC IN ORDER TO GET RADAR GUIDANCE.
 - PILOT SHOULD PLAN FOR POSSIBLE CLIMB AS DEPICTED ON SID, ACTUAL CLIMB CLEARANCE WILL BE GIVEN BY ATC.
 - IF UNABLE TO COMPLY WITH FLIGHT RESTRICTIONS, ADVISE ATC WHEN ACFT COMMENCES TO PUSHBACK or TAXI TO THE HOLDING POINT FOR DEPARTURE.

**REQUIRE MINIMUM CLIMB GRADIENT OF
425 FT PER NM (7.0%) UNTIL PASSING ALT 1500
FOR AIRSPACE RESTRICTIONS ONLY.**

Ground Speed (KT)	75	100	150	200	250	300
Rate of Climb (ft/min)	532	709	1063	1418	1772	2127

CHANGE : PDR.