

| RWY | DIRECTION | THR | BEARING STRENGTH |
|--|-----------|---------------------------------|---|
| 08 | 081° | 07° 30' 26" N 099° 36' 26" E | PCR 840/F/C/X/T |
| 26 | 261° | 07° 30' 37" N 099° 37' 34" E | |
| APRON A APRON B APRON C | | | PCR 500/F/C/X/T PCR 550/R/C/X/T PCR 910/R/C/X/T |
| TAXIWAY A, B AND C TAXIWAY D, E AND F | | | PCR 500/F/C/X/T PCR 840/F/C/X/T |

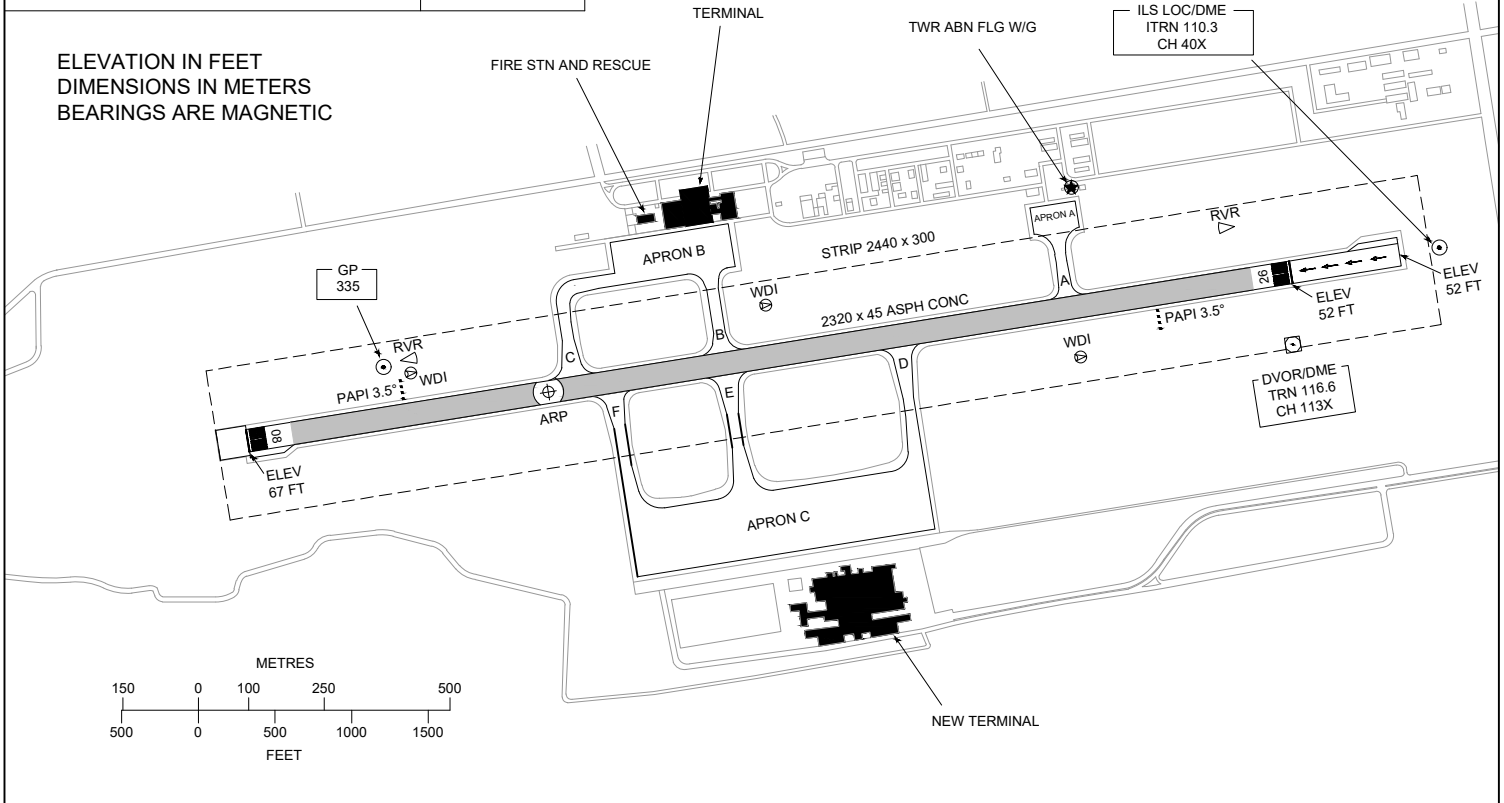
REMARKS:

- DETAILS OF AIRCRAFT STANDS ARE SHOWN IN AIRCRAFT PARKING/DOCKING CHART
- TAXIWAY A WIDTH 15 m.
- TAXIWAY B, C, D, E AND F WIDTH 23 m.

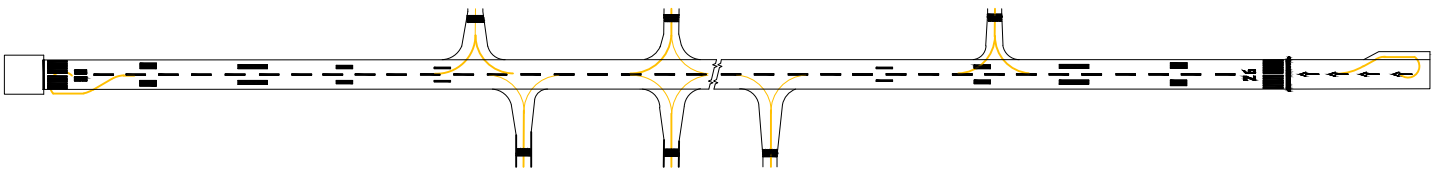


VAR 0° 20' W (2025)
ANNUAL RATE OF CHANGE 0° 2' E

ELEVATION IN FEET
DIMENSIONS IN METERS
BEARINGS ARE MAGNETIC



MARKING AIDS RWY 08/26 AND EXIT TWY



LIGHTING AIDS RWY 08/26 AND EXIT TWY

